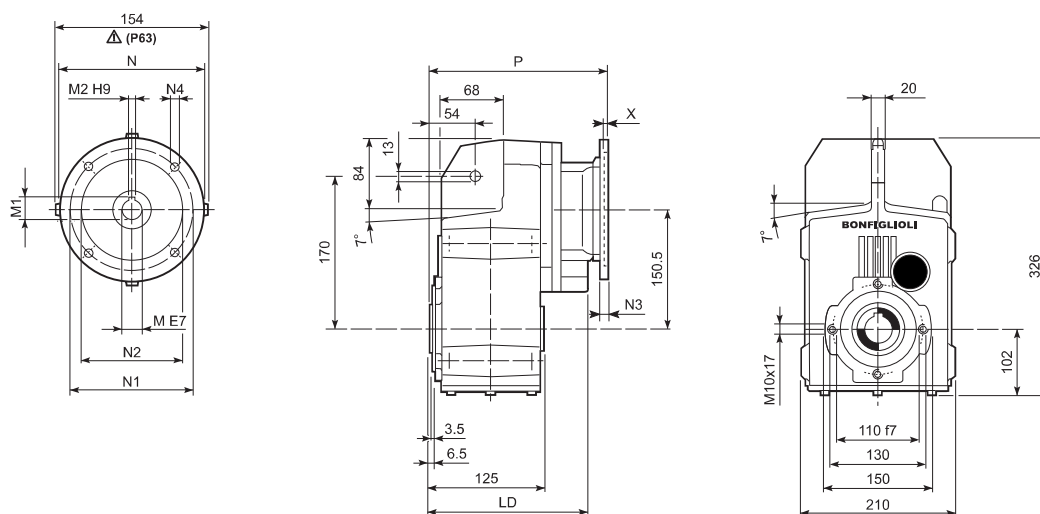
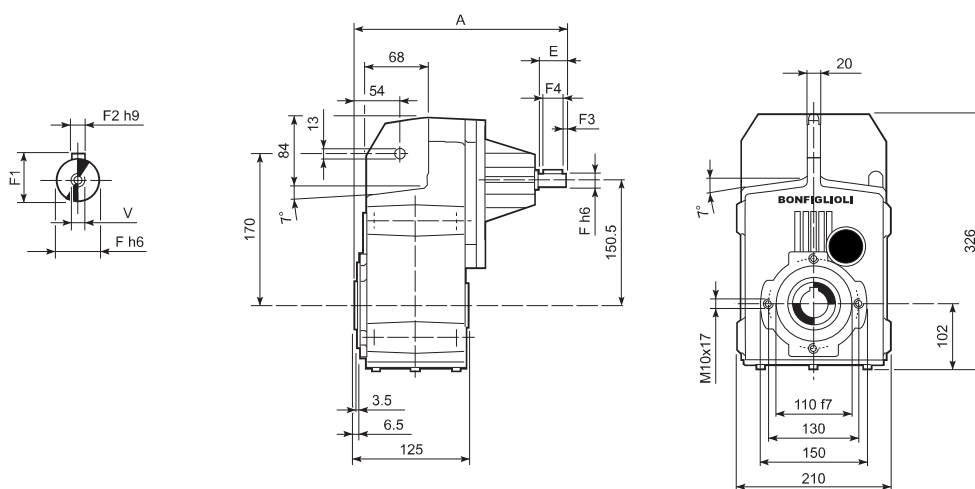


F 31...P(IEC)

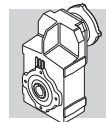


		LD	M	M1	M2	N	N1	N2	N3	N4	X	P	kg
F 31 2/3	P63	195.5	11	12.8	4	140	115	95	—	M8x19	4	225.5	17
F 31 2/3	P71	195.5	14	16.3	5	160	130	110	—	M8x16	4.5	225.5	17
F 31 2/3	P80	205.5	19	21.8	6	200	165	130	—	M10x12	4	245	18
F 31 2/3	P90	205.5	24	27.3	8	200	165	130	—	M10x12	4	245	17
F 31 2/3	P100	205.5	28	31.3	8	250	215	180	—	M12x16	4.5	255	21
F 31 2/3	P112	205.5	28	31.3	8	250	215	180	—	M12x16	4.5	255	21
F 31 2/3	P132	—	38	41.3	10	300	265	230	—	14	5	291.5	24
F 31 4	P63	—	11	12.8	4	140	115	95	—	M8x19	4	283	17
F 31 4	P71	—	14	16.3	5	160	130	110	—	M8x16	4.5	283	17
F 31 4	P80	—	19	21.8	6	200	165	130	—	M10x12	4	302.5	18
F 31 4	P90	—	24	27.3	8	200	165	130	—	M10x12	4	302.5	18
F 31 4	P100	—	28	31.3	8	250	215	180	—	M12x16	4.5	312.5	22
F 31 4	P112	—	28	31.3	8	250	215	180	—	M12x16	4.5	312.5	22

F 31...HS

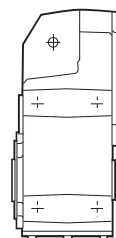
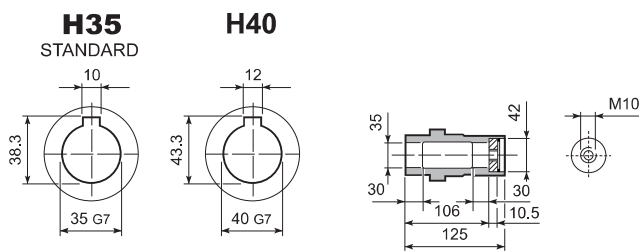


		A	E	F	F1	F2	F3	F4	V	kg
F 31 2	HS	275.5	40	19	21.5	6	2.5	35	M6x16	16.7
F 31 3		275.5	40	19	21.5	6	2.5	35	M6x16	16.7
F 31 4		290	40	16	18	5	2.5	35	M6x16	16.5

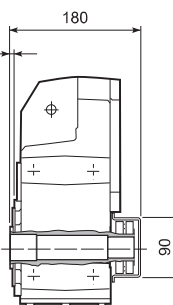
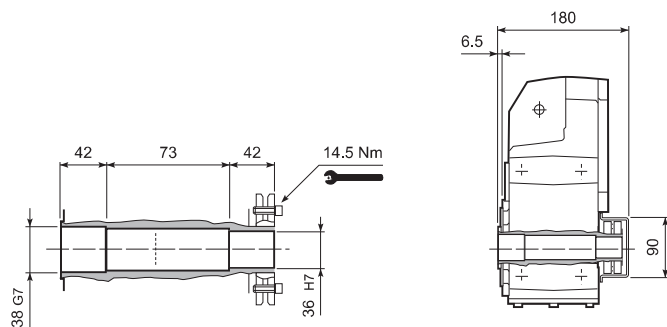


F 31

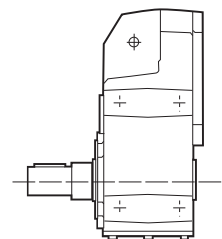
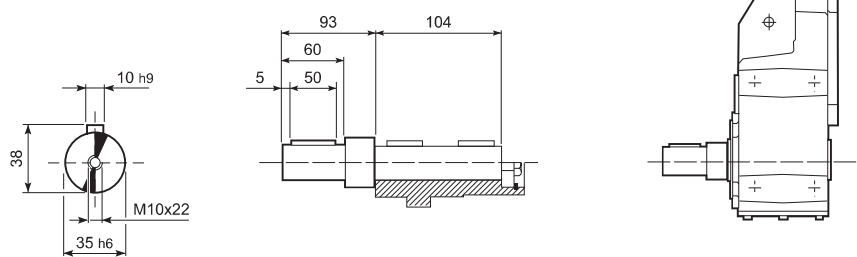
F 31...H



F 31...S

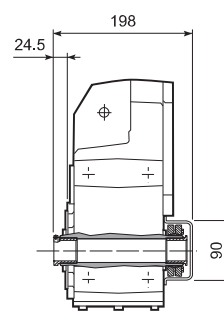
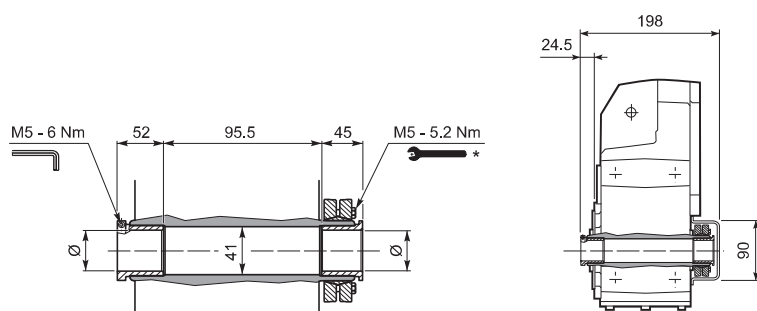


F 31...R

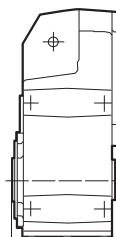
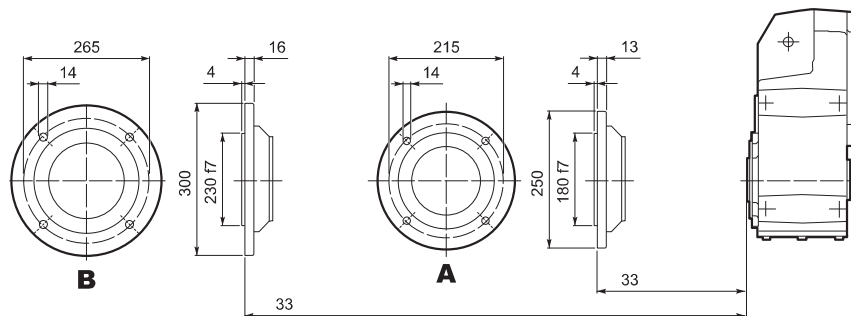


F 31...QF

	Ø
QF35	35
QF40	40



F 31...F...



* Follow the MOUNTING INSTRUCTIONS supplied with the gearbox.