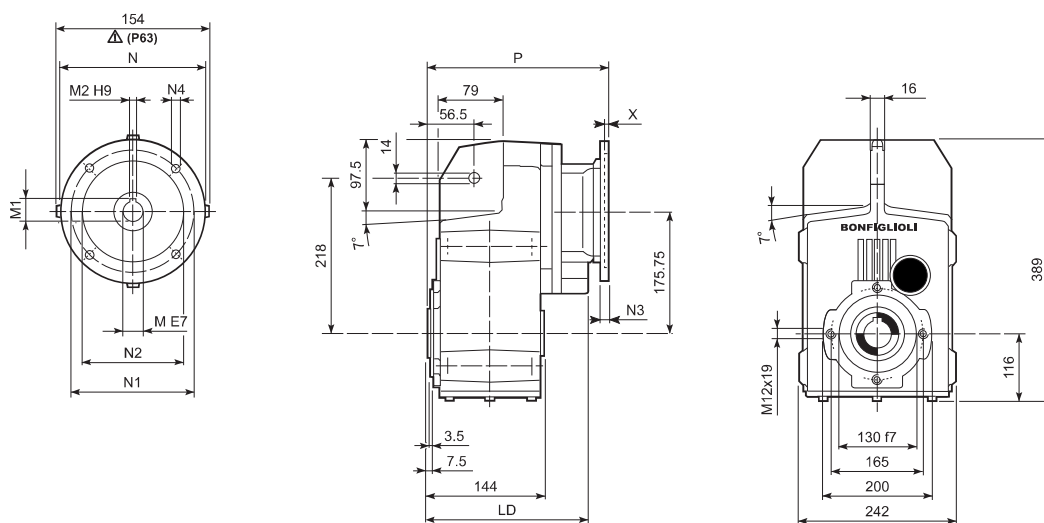
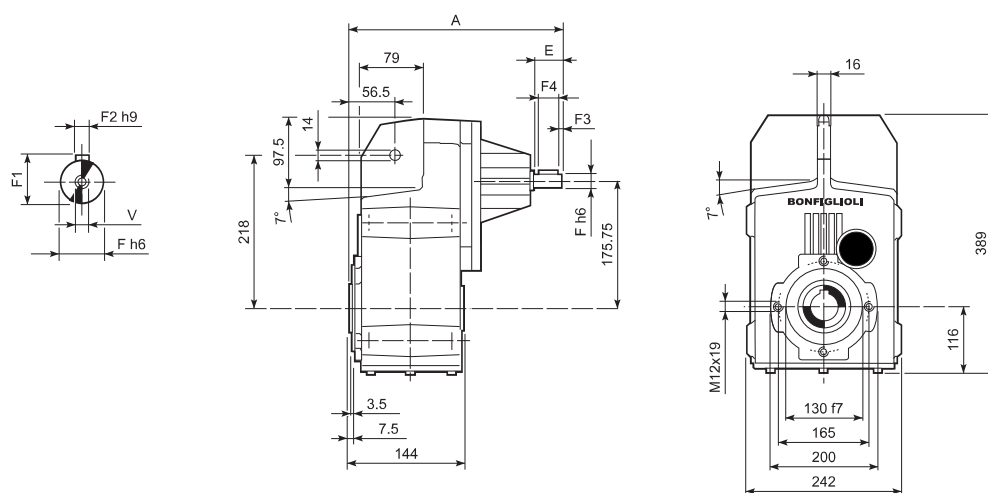


## F 41...P(IEC)

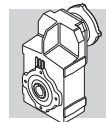


		LD	M	M1	M2	N	N1	N2	N3	N4	X	P	Kg		
		F 41 2/3	P63	215	11	12.8	4	140	115	95	—	M8x19	4	246	42
		F 41 2/3	P71	215	14	16.3	5	160	130	110	—	M8x16	4.5	246	42
		F 41 2/3	P80	231	19	21.8	6	200	165	130	—	M10x12	4	265.5	43
		F 41 2/3	P90	231	24	27.3	8	200	165	130	—	M10x12	4	265.5	43
		F 41 2/3	P100	231	28	31.3	8	250	215	180	—	M12x16	4.5	275.5	47
		F 41 2/3	P112	231	28	31.3	8	250	215	180	—	M12x16	4.5	275.5	47
		F 41 2/3	P132	—	38	41.3	10	300	265	230	16	14	5	312	50
		F 41 4	P63	—	11	12.8	4	140	115	95	—	M8x19	4	307.5	44
		F 41 4	P71	—	14	16.3	5	160	130	110	—	M8x16	4.5	307.5	44
		F 41 4	P80	—	19	21.8	6	200	165	130	—	M10x12	4	327	45
		F 41 4	P90	—	24	27.3	8	200	165	130	—	M10x12	4	327	45
		F 41 4	P100	—	28	31.3	8	250	215	180	—	M12x16	4.5	337	49
		F 41 4	P112	—	28	31.3	8	250	215	180	—	M12x16	4.5	337	49

## F 41...HS

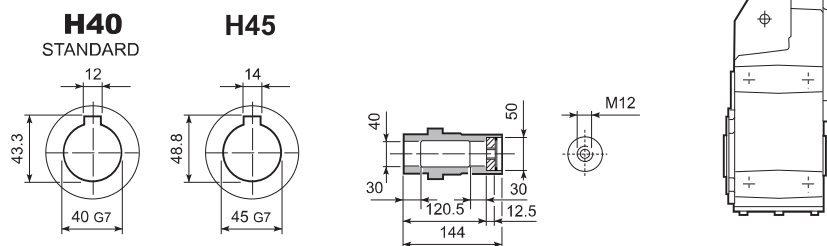


		A	E	F	F1	F2	F3	F4	V	Kg	
		F 41 2	335.5	50	24	27	8	2.5	45	M8x19	44.9
		F 41 3	335.5	50	24	27	8	2.5	45	M8x19	46.4
		F 41 4	357.5	40	19	21.5	6	2.5	35	M6x16	43.5

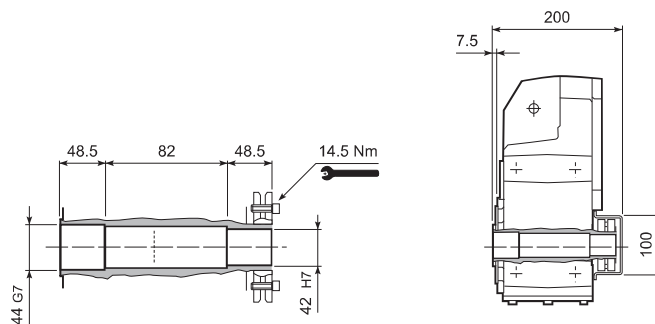


# F 41

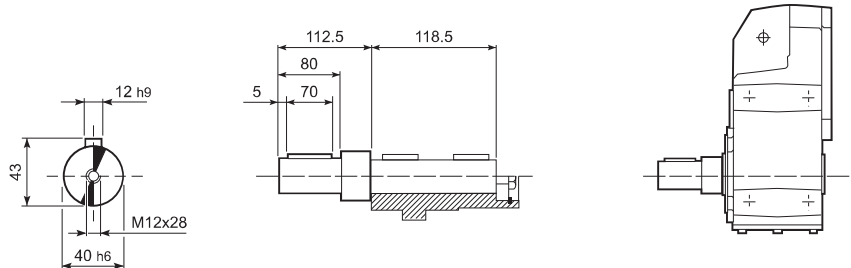
## F 41...H



## F 41...S



## F 41...R

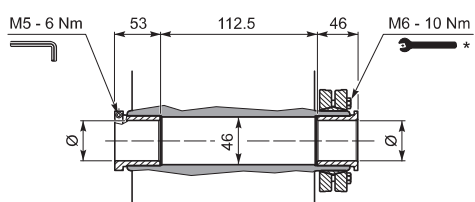


## F 41...QF

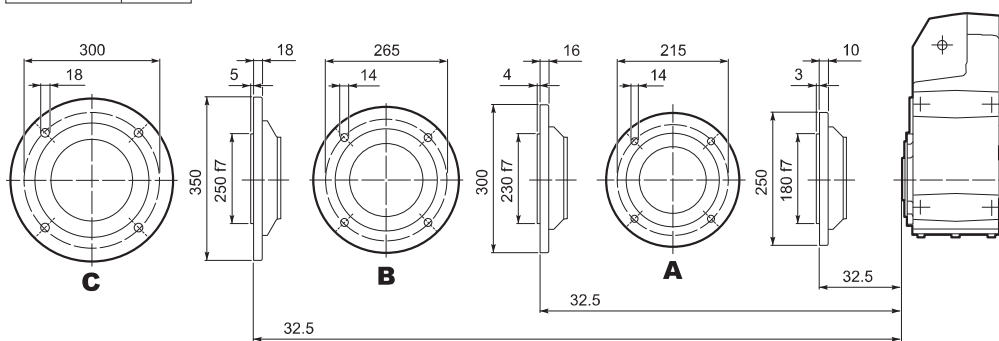
	Ø
QF42	42
QF45	45



	M <sub>n2</sub> max [Nm]
F 41 QF42	850
F 41 QF45	1000



## F 41...F...



\* Follow the MOUNTING INSTRUCTIONS supplied with the gearbox.