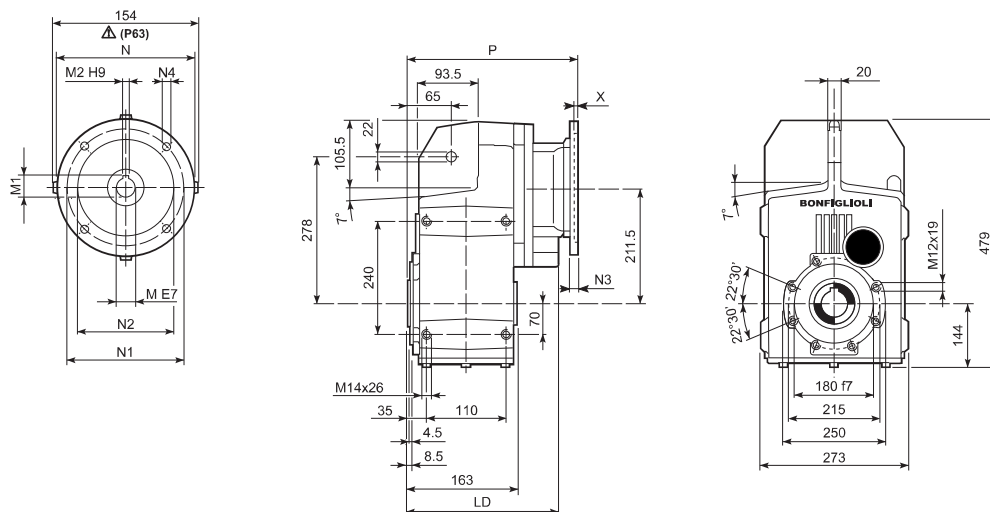
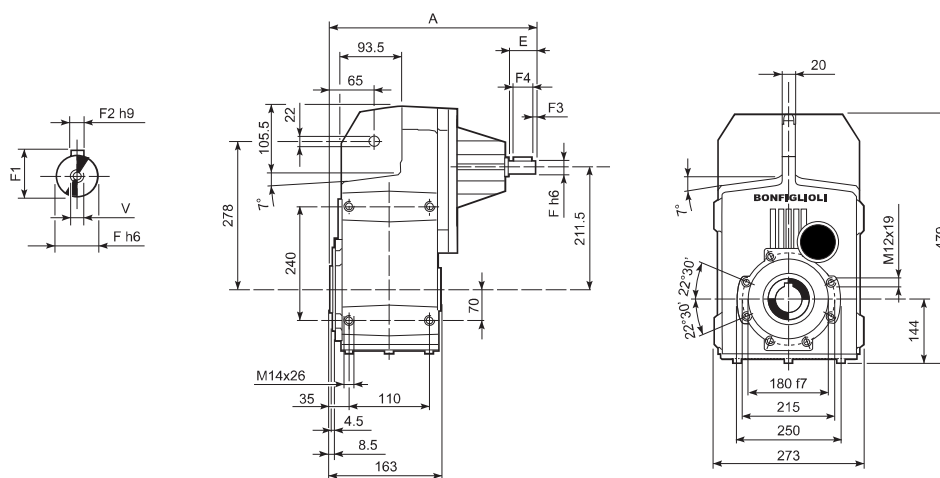


## F 51...P(IEC)

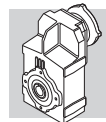


		LD	M	M1	M2	N	N1	N2	N3	N4	X	P			
		F 51 2/3	P63	238	11	12.8	4	140	115	95	—	M8x19	4	268	65
		F 51 2/3	P71	238	14	16.3	5	160	130	110	—	M8x16	4.5	268	65
		F 51 2/3	P80	253	19	21.8	6	200	165	130	—	M10x12	4	287.5	67
		F 51 2/3	P90	253	24	27.3	8	200	165	130	—	M10x12	4	287.5	67
		F 51 2/3	P100	238	28	31.3	8	250	215	180	—	M12x16	4.5	297.5	71
		F 51 2/3	P112	238	28	31.3	8	250	215	180	—	M12x16	4.5	297.5	71
		F 51 2/3	P132	238	38	41.3	10	300	265	230	16	14	5	334	74
		F 51 2/3	P160	—	42	45.3	12	350	300	250	23	18	5.5	384.5	78
		F 51 2/3	P180	—	48	51.8	14	350	300	250	23	18	5.5	384.5	78
		F 51 4	P63	—	11	12.8	4	140	115	95	—	M8x19	4	339.5	70
		F 51 4	P71	—	14	16.3	5	160	130	110	—	M8x16	4.5	339.5	70
		F 51 4	P80	—	19	21.8	6	200	165	130	—	M10x12	4	359	71
		F 51 4	P90	—	24	27.3	8	200	165	130	—	M10x12	4	359	71
		F 51 4	P100	—	28	31.3	8	250	215	180	—	M12x16	4.5	369	75
		F 51 4	P112	—	28	31.3	8	250	215	180	—	M12x16	4.5	369	75
		F 51 4	P132	—	38	41.3	10	300	265	230	16	14	5	405.5	78

## F 51...HS

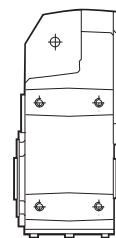
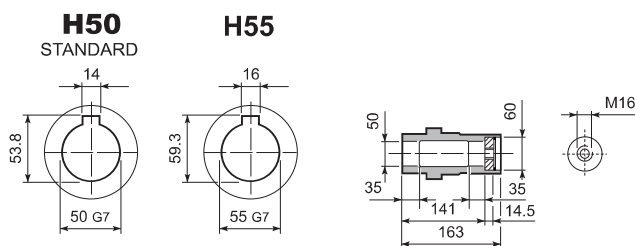


		A	E	F	F1	F2	F3	F4	V			
		F 51 2	HS	357.5	50	24	27	8	2.5	45	M8x19	65
		F 51 3	HS	357.5	50	24	27	8	2.5	45	M8x19	68
		F 51 4	HS	389.5	40	19	21.5	6	2.5	35	M6x16	70

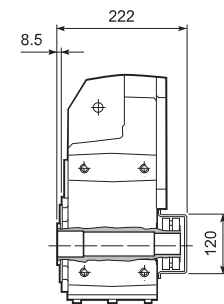
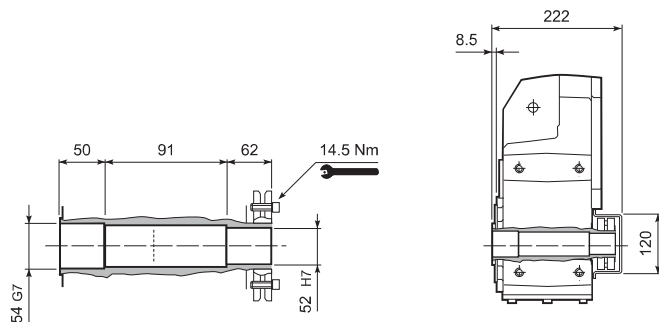


# F 51

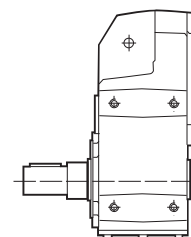
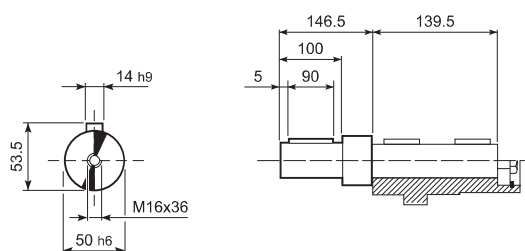
## F 51...H



## F 51...S



## F 51...R

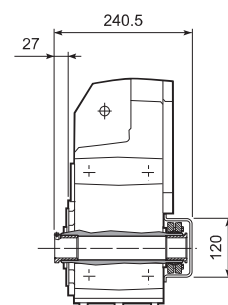
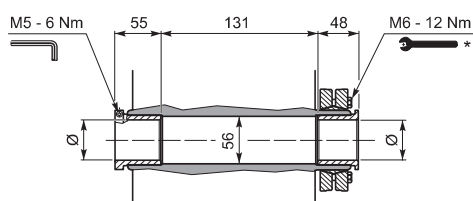


## F 51...QF

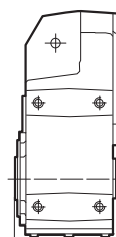
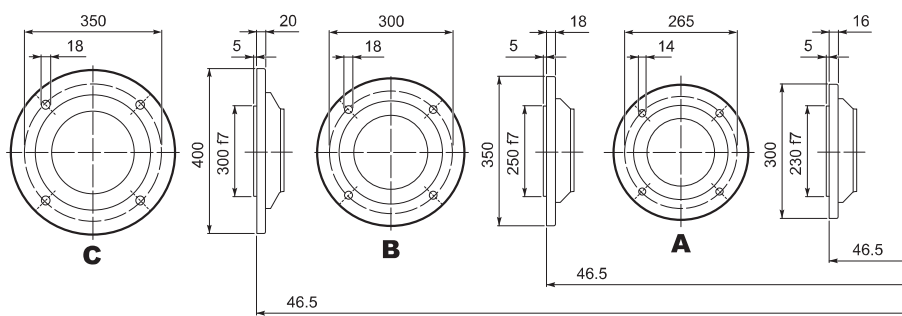
	Ø
QF50	50
QF55	55



	M <sub>n2</sub> max [Nm]
F 51 QF50	1750



## F 51...F...



\* Follow the MOUNTING INSTRUCTIONS supplied with the gearbox.