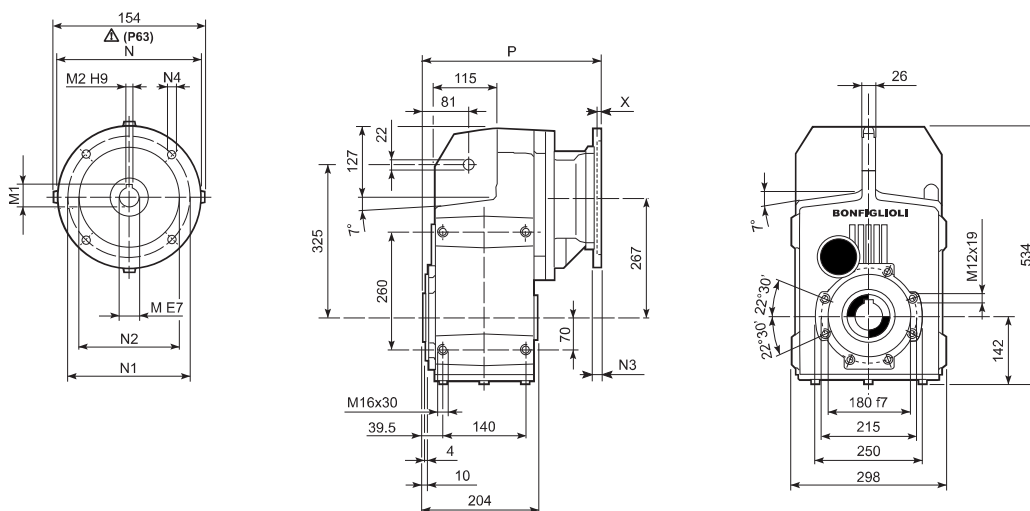
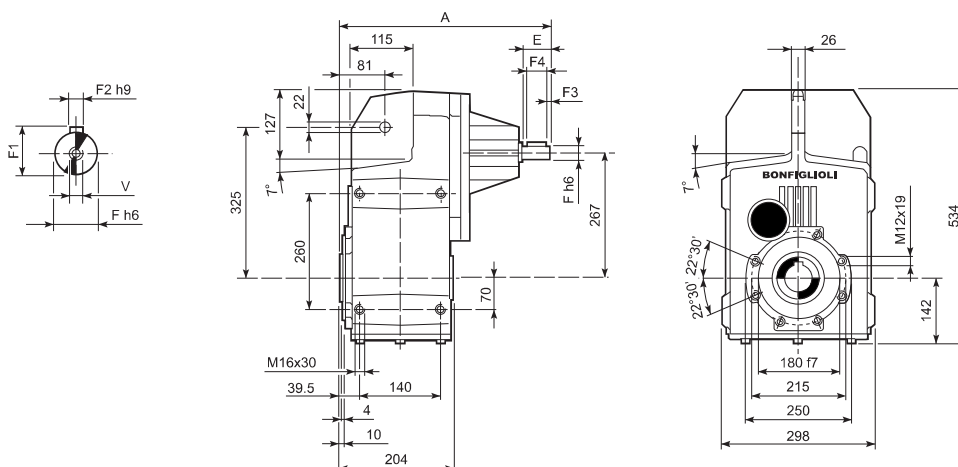


F 60...P(IEC)

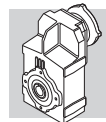


| | | M | M1 | M2 | N | N1 | N2 | N3 | N4 | X | P | Kg |
|--------|------|----|------|----|-----|-----|-----|----|--------|-----|-------|-----|
| F 60 3 | P63 | 11 | 12.8 | 4 | 140 | 115 | 95 | — | M8x19 | 4 | 302.5 | 103 |
| F 60 3 | P71 | 14 | 16.3 | 5 | 160 | 130 | 110 | — | M8x16 | 4.5 | 302.5 | 103 |
| F 60 3 | P80 | 19 | 21.8 | 6 | 200 | 165 | 130 | — | M10x12 | 4 | 322 | 104 |
| F 60 3 | P90 | 24 | 27.3 | 8 | 200 | 165 | 130 | — | M10x12 | 4 | 322 | 104 |
| F 60 3 | P100 | 28 | 31.3 | 8 | 250 | 215 | 180 | — | M12x16 | 4.5 | 331 | 108 |
| F 60 3 | P112 | 28 | 31.3 | 8 | 250 | 215 | 180 | — | M12x16 | 4.5 | 331 | 108 |
| F 60 3 | P132 | 38 | 41.3 | 10 | 300 | 265 | 230 | 16 | 14 | 5 | 367.5 | 111 |
| F 60 3 | P160 | 42 | 45.3 | 12 | 350 | 300 | 250 | 23 | 18 | 5.5 | 419 | 116 |
| F 60 3 | P180 | 48 | 51.8 | 14 | 350 | 300 | 250 | 23 | 18 | 5.5 | 419 | 116 |
| F 60 4 | P63 | 11 | 12.8 | 4 | 140 | 115 | 95 | — | M8x19 | 4 | 373 | 108 |
| F 60 4 | P71 | 14 | 16.3 | 5 | 160 | 130 | 110 | — | M8x16 | 4.5 | 373 | 108 |
| F 60 4 | P80 | 19 | 21.8 | 6 | 200 | 165 | 130 | — | M10x12 | 4 | 392.5 | 110 |
| F 60 4 | P90 | 24 | 27.3 | 8 | 200 | 165 | 130 | — | M10x12 | 4 | 392.5 | 110 |
| F 60 4 | P100 | 28 | 31.3 | 8 | 250 | 215 | 180 | — | M12x16 | 4.5 | 402.5 | 114 |
| F 60 4 | P112 | 28 | 31.3 | 8 | 250 | 215 | 180 | — | M12x16 | 4.5 | 402.5 | 114 |

F 60...HS

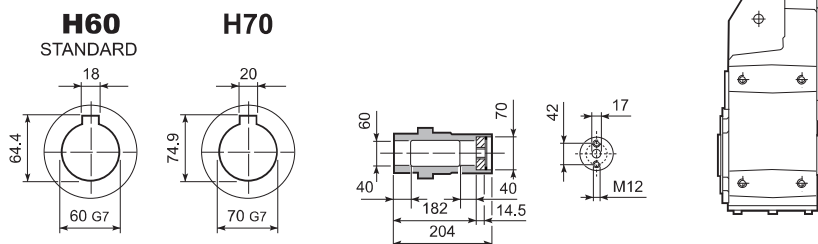


| | | A | E | F | F1 | F2 | F3 | F4 | V | Kg |
|--------|----|-------|----|----|----|----|-----|----|--------|-----|
| F 60 3 | HS | 419 | 60 | 28 | 31 | 8 | 5.0 | 50 | M10x22 | 108 |
| F 60 4 | | 462.5 | 50 | 24 | 27 | 8 | 2.5 | 45 | M8x19 | 105 |

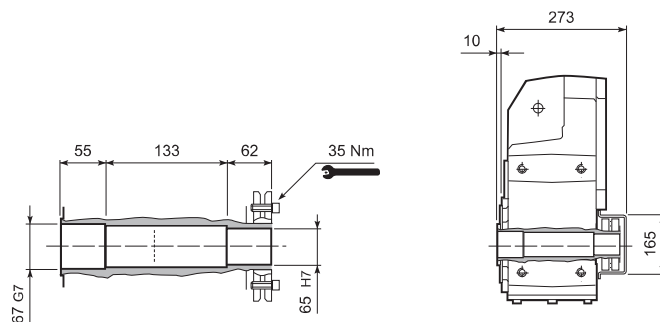


F 60

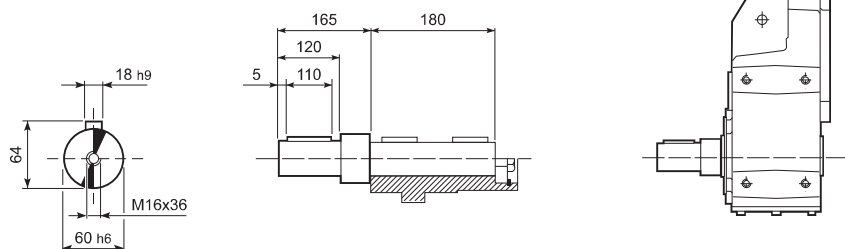
F 60...H



F 60...S

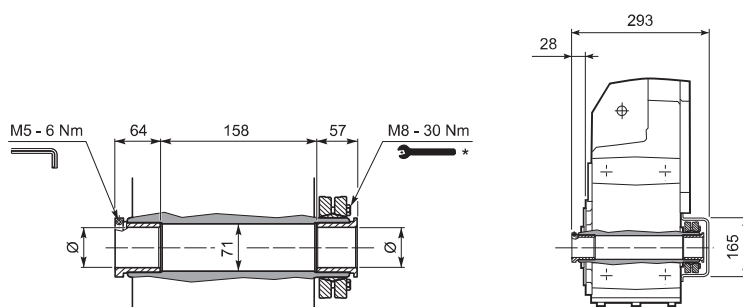


F 60...R

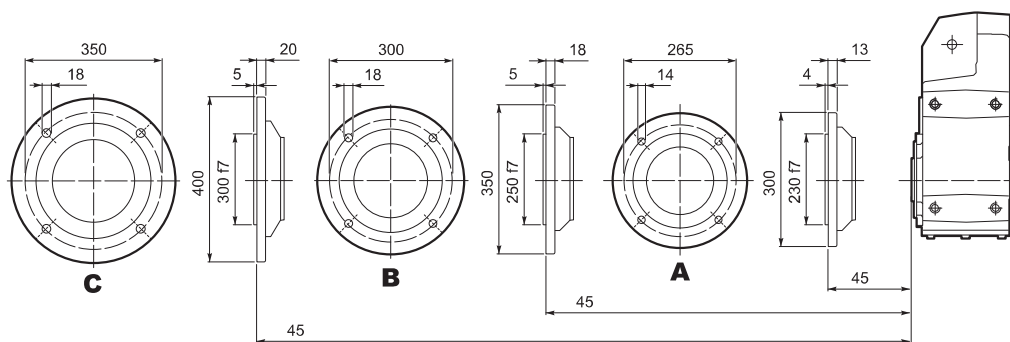


F 60...QF

| | Ø |
|------|----|
| QF60 | 60 |
| QF65 | 65 |
| QF70 | 70 |



F 60...F...



* Follow the MOUNTING INSTRUCTIONS supplied with the gearbox.