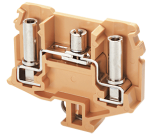


CDTTS



Disconnect and Test Terminal Blocks

These Terminal blocks are used for measuring, control, regulatory circuits and for current transformer connection application. They provide a clear functional advantage for devices having utility instruments and associated transformers.

Circuit disconnection is achieved by opening the central slide link. The barrel nuts provide test sockets for inserting test plugs and for carrying out current and voltage injection protocols.

Cross connection is possible with the aid of external shorting links. CA515 & CA514 switchable link assembly can be used for current transformer shorting application.

TECHNICAL DATA

Rated Voltage	1000 V
Rated Current	41 A
Tightening Torque	1.2 Nm
Housing Material	Melamine
Product Function	Sliding Type Disconnect and Test
Wire Entry Orientation	Side Entry
Mounting Possibility	DIN 32 Rail
Screw Size	M4
Operated by	Screwdriver
Rated Surge Voltage	8 KV
Pollution Degree	3

CONNECTION DATA

Conductor Cross Section Stranded min.	1.5 mm ²
Conductor Cross Section Stranded max.	6 mm ²
Conductor Cross Section AWG/Kcmil min	22 AWG
Conductor Cross Section AWG/Kcmil max	8 AWG
Conductor Cross Section Stranded with Ferrule/Lug min	1.5 mm ²
Conductor Cross Section Stranded with Ferrule/Lug max	6 mm ²
2 Conductors with same Cross Section Stranded min	1.5 mm ²
2 Conductor with same Cross Section Stranded max	6 mm ²
Conductor Cross Section Solid min	1.5 mm ²
Conductor Cross Section Solid max	10 mm ²
Stripping Length	12 mm

DIMENSIONS

Height with DIN 32 rail	59.5 mm
Length	69 mm
Width (Thickness)	13 mm

ORDERING INFORMATION

CAT. NO.	DESCRIPTION	STD. PACK
CDTTS	6 sq. mm Disconnect and Test Terminal Block in Khaki/Beige colour	50

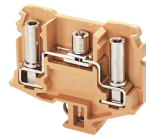
ORDERING INFORMATION

CAT. NO.	DESCRIPTION	STD. PACK
CDTTSR	6 sq.mm Disconnect and Test Terminal Block in Red colour	50
CDTTSY	6 sq.mm Disconnect and Test Terminal Block in Yellow colour	50
CDTTSBU	6 sq.mm Disconnect and Test Terminal Block in Blue colour	50
CDTTSBK	6 sq.mm Disconnect and Test Terminal Block in Black colour	50

ACCESSORIES

IMAGES	CAT. NO.	DESCRIPTION	STD. PACK
	CA501-1M	Din 32 Rail unslotted 1 meter	50
	CA501-1M-S	Din 32 Rail slotted 1 meter	50
	CA501-2M	Din 32 Rail unslotted 2 meter	50
	CA501-2M-S	Din 32 Rail slotted 2 meter	50
	CA502	End Clamp in Steel suitable for Din 32 Rail	50
	CA702	End Clamp in Polyamide 66 suitable for Din 32 / Din 35 / Din 35-15 Rails	50
	CDTEP	End Plate in Khaki / Beige colour	50
	CA514/2-2	Insulated Removable Shorting Link available in 2 Pole	100
	CA514/2-3	Insulated Removable Shorting Link available in 3 Pole	50
	CA514/2-4	Insulated Removable Shorting Link available in 4 Pole	50
	CA514/4-2	Ring Type Shorting link 2 Pole	100
	CA514/4-3	Ring Type Shorting link 2 Pole	50
	CA514/4-4	Ring Type Shorting link 2 Pole	50

CDTTS



connectwell
THE RIGHT CONNECTION

ACCESSORIES

IMAGES	CAT. NO.	DESCRIPTION	STD. PACK
	CA512/2-2	Removable Shorting Link available in 2 Pole	100
	CA512/2-3	Removable Shorting Link available in 3 Pole	50
	CA512/2-4	Removable Shorting Link available in 4 Pole	50
	CA512/4-2	Insulated Ring Type Shorting link 2 Pole	100
	CA512/4-3	Insulated Ring Type Shorting link 2 Pole	50
	CA512/4-4	Insulated Ring Type Shorting link 2 Pole	50
	CA509/K2B4	Blank Marking Tag	100
	CDTPC1	This protective cover is used for covering 2 Terminals	100
	CDTPC2	This protective cover is used for covering 3 Terminals	100
	CDTPC3	Protective Cover is available in 100 mm Length	10
	CDTPC4	Protective Cover is available in 200 mm Length	10
	CDTPC5	Protective Cover is available in 300 mm Length	10
	SCS1/5.5	Electricians Screwdriver for slotted screws	10

APPROVALS



RATINGS AS PER STANDARDS

STANDARDS	CSA C.22.2 No:158	IEC/EN60947-7-1	IEC 60947-7-1
Approvals	CSA	CE	S MARK
Conductor Cross Section Stranded min.	22 AWG	1.5 mm ²	1.5 mm ²
Conductor Cross Section Stranded max.	8 AWG	6 mm ²	6 mm ²
Rated Voltage	600 V	1000 V	1000 V
Rated Current	50 A	41 A	41 A
Tightening Torque	14 lb-in	1.2 Nm	1.2 Nm