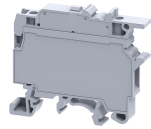


# CF4UL



**connectwell**  
THE RIGHT CONNECTION

4 sq.mm Single Level Fuse Terminal Blocks with LED indication.

These Terminal Blocks are used in electrical and control systems which require fuse protection. The CF series accepts industry standard 5 x 20 mm and 5 x 25 mm glass cartridge fuses. These blocks are completely closed and do not need a separate end plate. CF4UL series Terminal are used for offline indication in case of a fuse blow out.

## TECHNICAL DATA

Rated Voltage	800 V
Rated Current	6.3 A
Tightening Torque	0.5 Nm
Housing Material	Polymide
Product Function	Single Level Fuse
Wire Entry Orientation	Side Entry
Mounting Possibility	DIN 32/DIN 35/DIN 35-15 Rail
Screw Size	M3
Operated by	Screwdriver
Rated Surge Voltage	8 KV
Pollution Degree	3

## CONNECTION DATA

Conductor Cross Section Stranded min.	0.2 mm <sup>2</sup>
Conductor Cross Section Stranded max.	4 mm <sup>2</sup>
Conductor Cross Section AWG/Kcmil min	22 AWG
Conductor Cross Section AWG/Kcmil max	10 AWG
Conductor Cross Section Stranded with Ferrule/Lug min	0.2 mm <sup>2</sup>
Conductor Cross Section Stranded with Ferrule/Lug max	4 mm <sup>2</sup>
2 Conductors with same Cross Section Stranded min	0.2 mm <sup>2</sup>
2 Conductor with same Cross Section Stranded max	2.5 mm <sup>2</sup>
Conductor Cross Section Solid min	0.2 mm <sup>2</sup>
Conductor Cross Section Solid max	6 mm <sup>2</sup>
2 Conductors with same Cross Section Stranded with TWIN Ferrule/Lug min	0.2 mm <sup>2</sup>
2 Conductor with same Cross Section Stranded with TWIN Ferrule/Lug max	2.5 mm <sup>2</sup>
Stripping Length	9.5 mm
Internal Cylindrical Guage	A4

## DIMENSIONS

Height with DIN 32 rail	56.5 mm
Height with DIN 35 x 15 mm rail	57.6 mm
Height with DIN 35 x 7.5 mm rail	50.3 mm
Length	57 mm
Width (Thickness)	8 mm

## FUSE SPECIFICATIONS

Fuse Type	Cartridge glass fuse
Fuse Size	5 x 20 mm
Fuse Current Rating	6.3 A

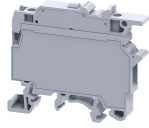
## ORDERING INFORMATION

CAT. NO.	DESCRIPTION	STD. PACK
CF4UL6-60V	4sqmm Fuse Terminal Block with indication suitable for 6-60V.	50
CF4UL6-60VBU	4sqmm Fuse Terminal Block with indication suitable for 6-60V in Blue colour.	50
CF4UL6-60VBK	4sqmm Fuse Terminal Block with indication suitable for 6-60V in Black colour.	50
CF4UL110-240V	4sqmm Fuse Terminal Block with indication suitable for 110-240v	50
CF4UL110-240VBU	4sqmm Fuse Terminal Block with indication suitable for 110-240v in Bule colour.	50
CF4UL110-240VBK	4sqmm Fuse Terminal Block with indication suitable for 110-240v in Black colour.	50





## ACCESSORIES

IMAGES	CAT. NO.	DESCRIPTION	STD. PACK
	CA501-1M	Din 32 Rail unslotted 1 meter	50
	CA501-1M-S	Din 32 Rail slotted 1 meter	50
	CA501-2M	Din 32 Rail unslotted 2 meter	50
	CA501-2M-S	Din 32 Rail slotted 2 meter	50
	CA701-1M	Din 35 Rail unslotted 1 meter	50
	CA701-2M	Din 35 Rail unslotted 2 meter	50
	CA701-2M-S	Din 35 Rail slotted 2 meter	50
	CA701-1M-S	Din 35 Rail slotted 1 meter	50
	CA701-15-1M	Din 35 Rail 15 deep unslotted 1 meter	50
	CA701-15-1M-S	Din 35 Rail 15 deep slotted 1 meter	50
	CA701-15-2M	Din 35 Rail 15 deep unslotted 2 meter	50
	CA701-15-2M-S	Din 35 Rail 15 deep slotted 2 meter	50
	CA702	End Clamp in Polyamide 66 suitable for Din 32 / Din 35 / Din 35-15 Rails	50
	CA802	End Clamp in Polyamide suitable for Din 35 / Din 35-15 Rails	50

CF4UL


**connectwell**  
 THE RIGHT CONNECTION

## ACCESSORIES

IMAGES	CAT. NO.	DESCRIPTION	STD. PACK
	CA711/2	External Comb Type Shorting Link available in 2 Pole	100
	CA711/3	External Comb Type Shorting Link available in 3 Pole	50
	CA711/4	External Comb Type Shorting Link available in 4 Pole	50
	CA711/10	External Comb Type Shorting Link available in 10 Pole	20
	CA509/K6	Blank Marking Tag	100
	CA509/K8	Marking Tag with Vertical printing.	100
	SCS0.6/3.5	Electricians Screwdriver for slotted screws	10

## APPROVALS



## RATINGS AS PER STANDARDS

STANDARDS	UL 1059	CSA C.22.2 No:158	DIN EN60947-7-3
Approvals	UL	CSA	CE
Conductor Cross Section Stranded min.	22 AWG	22 AWG	0.2 mm <sup>2</sup>
Conductor Cross Section Stranded max.	10 AWG	10 AWG	4 mm <sup>2</sup>
Rated Voltage	600 V	600 V	800 V
Rated Current	10 A	10 A	6.3 A
Tightening Torque	7 lb-in	7 lb-in	0.5 Nm