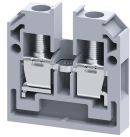


CMB4



**connectwell**  
THE RIGHT CONNECTION

4 sq. mm Panel Mount Terminal Blocks.

A perfect solution for extremely compact wiring applications, these terminal block are modular and can be stacked to form multi-pole terminal block assemblies.

**TECHNICAL DATA**

Rated Voltage	500 V
Rated Current	32 A
Tightening Torque	0.5 Nm
Housing Material	Polymide
Product Function	Feed Through
Wire Entry Orientation	Side
Mounting Possibility	Panel/Surface
Screw Size	M3
Operated by	Screwdriver
Rated Surge Voltage	4 KV
Pollution Degree	3

**CONNECTION DATA**

Conductor Cross Section Stranded min.	0.2 mm <sup>2</sup>
Conductor Cross Section Stranded max.	4 mm <sup>2</sup>
Conductor Cross Section AWG/Kcmil min	22 AWG
Conductor Cross Section AWG/Kcmil max	10 AWG
Conductor Cross Section Stranded with Ferrule/Lug min	0.2 mm <sup>2</sup>
Conductor Cross Section Stranded with Ferrule/Lug max	4 mm <sup>2</sup>
2 Conductors with same Cross Section Stranded min	0.2 mm <sup>2</sup>
2 Conductor with same Cross Section Stranded max	2.5 mm <sup>2</sup>
Conductor Cross Section Solid min	0.2 mm <sup>2</sup>
Conductor Cross Section Solid max	6 mm <sup>2</sup>
2 Conductors with same Cross Section Stranded with TWIN Ferrule/Lug min	0.2 mm <sup>2</sup>
2 Conductor with same Cross Section Stranded with TWIN Ferrule/Lug max	2.5 mm <sup>2</sup>
Stripping Length	9 mm
Internal Cylindrical Guage	A4

**DIMENSIONS**

Height	28.5 mm
Length	27 mm
Width (Thickness)	6 mm

**ORDERING INFORMATION**

CAT. NO.	DESCRIPTION	STD. PACK
CMB4	4 sqmm Panel Mount Terminal Block in Grey colour.	100

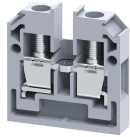
**ORDERING INFORMATION**

CAT. NO.	DESCRIPTION	STD. PACK
CMB4R	4 sqmm Panel Mount Terminal Block in Red colour.	100
CMB4Y	4 sqmm Panel Mount Terminal Block in Yellow colour.	100
CMB4BU	4 sqmm Panel Mount Terminal Block in Blue colour.	100
CMB4BK	4 sqmm Panel Mount Terminal Block in Black colour.	100
CMB4GN	4 sqmm Panel Mount Terminal Block in Green colour.	100
CMB4W	4 sqmm Panel Mount Terminal Block in White colour.	100

**ACCESSORIES**

IMAGES	CAT. NO.	DESCRIPTION	STD. PACK
	EPCMB4	End Plate in Grey colour suitable for CMB4 Terminal Block	50
	SPCMB4	Separator Plate in Grey colour	100
	CA727/2	Pre Assembled Shorting Link assemblies with 2 poles	100
	CA727/3	Pre Assembled Shorting Links assemblies with 3 poles	100
	CA727/4	Pre Assembled Shorting Link assemblies with 4 poles	100
	CA727/10	Pre Assembled Shorting Links assemblies with 10 poles	10
	CA747/2	Pre assembled Shorting Link for 2 way shorting	100
	CA747/3	Pre assembled Shorting Link for 3 way shorting	100
	CA747/4	Pre assembled Shorting Link for 4 way shorting	100
	CA747/10	Pre assembled Shorting Link for 10 way shorting	10
	CA714/2	External Comb Type Shorting Link Available in 2 pole	100
	CA714/3	External Comb Type Shorting Link Available in 3 pole	100
	CA714/4	External Comb Type Shorting Link Available in 4 pole	100
	CA714/10	External Comb Type Shorting Link Available in 10 pole	20

CMB4



**connectwell**  
THE RIGHT CONNECTION

**ACCESSORIES**

IMAGES	CAT. NO.	DESCRIPTION	STD. PACK
	CA703/1	Permanent Shorting Link for 2 way shorting	100
	CA704/1	Permanent Shorting Link for 3 way shorting	100
	CA705/1	Permanent Shorting Link for 4 way shorting	100
	CA732/10	Permanent Shorting Link for 10 way shorting	100
	CA732/10-A	Permanent Shorting Link (Breakable) for 10 way shorting	100
	CA732/100	Permanent Shorting Link for 100 way shorting	100
	CA607/S/Q	Shorting Sleeve and Screw	100
	CA509/K2	Marking Tag Blank suitable for CDL4U / CDL4U(I.S) / CTL2.5U / CTL2.5UH / CTL2.5UL / CTL2.5HUL / CTL2.5U(I.S) / CTL2.5U(I.S)D2 / CGMT4 / CSFL4U / CSFL4U(L) / CMT4 / CMB4 / ASF4 / ASF4(L) / CTS2.5	100
	CA707/TS/01	Test Socket Suitable for CTS2.5UN / CTS2.5UE / CTS4UN / CTC4U / CMB4 / CTLG2.5 / CTL2.5U / CTL2.5UH / ODL4U / ODL4UA / CDLG2.5 / CMC1-2 / CMC2-2 Terminal Blocks.	100
	SCS0.6/3.5	Electricians Screwdriver for slotted screws	10

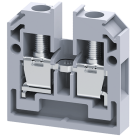
**APPROVALS**



**RATINGS AS PER STANDARDS**

STANDARDS	UL 1059	CSA C.22.2 No:158	DIN EN60947-7-1
Approvals	UL	CSA	VDE
Conductor Cross Section Stranded min.	22 AWG	22 AWG	0.5 mm <sup>2</sup>
Conductor Cross Section Stranded max.	10 AWG	10 AWG	4 mm <sup>2</sup>
Rated Voltage	300 V	300 V	400 V
Rated Current	30 A	35 A	32 A
Tightening Torque	7 lb-in	7 lb-in	0.5 Nm

CMB4



**connectwell**  
THE RIGHT CONNECTION

**RATINGS AS PER STANDARDS**

<b>STANDARDS</b>	<b>EN60079-7</b>	<b>IEC/EN60947-7-1</b>	<b>EN60079-7</b>
Approvals	ATEX	CE	ATEX-IECex
Conductor Cross Section Stranded min.	0.5 mm <sup>2</sup>	0.2 mm <sup>2</sup>	0.5 mm <sup>2</sup>
Conductor Cross Section Stranded max.	4 mm <sup>2</sup>	4 mm <sup>2</sup>	4 mm <sup>2</sup>
Rated Voltage	440 V	500 V	440 V
Rated Current	28 A	32 A	28 A
Tightening Torque	0.5 Nm	0.5 Nm	0.5 Nm
Operating Temperature Range	-40 to +85 °C		