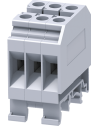


# CMDB6



6 sq.mm Modular Distribution Blocks.

CMDB blocks are a modified version of the CDB terminal blocks without the central incoming terminal connection.

### TECHNICAL DATA

Rated Voltage	1000 V
Rated Current	41 A
Tightening Torque	0.8 Nm
Housing Material	Polymide
Product Function	Modular Distribution Blocks
Wire Entry Orientation	Side Entry
Mounting Possibility	DIN 32/DIN 35/DIN 35-15 Rail
Screw Size	M3.5
Operated by	Screwdriver
Rated Surge Voltage	8 KV
Pollution Degree	3

### CONNECTION DATA

Conductor Cross Section Stranded min.	1.5 mm <sup>2</sup>
Conductor Cross Section Stranded max.	6 mm <sup>2</sup>
Conductor Cross Section AWG/Kcmil min	22 AWG
Conductor Cross Section AWG/Kcmil max	8 AWG
Conductor Cross Section Stranded with Ferrule/Lug min	1.5 mm <sup>2</sup>
Conductor Cross Section Stranded with Ferrule/Lug max	6 mm <sup>2</sup>
2 Conductors with same Cross Section Stranded min	1.5 mm <sup>2</sup>
2 Conductor with same Cross Section Stranded max	4 mm <sup>2</sup>
2 Conductors with same Cross Section Stranded with TWIN Ferrule/Lug min	1.5 mm <sup>2</sup>
2 Conductor with same Cross Section Stranded with TWIN Ferrule/Lug max	4 mm <sup>2</sup>
Stripping Length	9 mm
Internal Cylindrical Guage	A5

### DIMENSIONS

Height with DIN 32 rail	52.8 mm
Height with DIN 35 x 15 mm rail	55.5 mm
Height with DIN 35 x 7.5 mm rail	47.8 mm
Length	48 mm

### ORDERING INFORMATION

CAT. NO.	DESCRIPTION	STD. PACK
CMDB6/2	Grey colour Modular Distribution Terminal Block with 4 outputs of 6 sq.mm	10
CMDB6/3	Grey colour Modular Distribution Terminal Block with 6 outputs of 6 sq.mm	10

### ORDERING INFORMATION

CAT. NO.	DESCRIPTION	STD. PACK
CMDB6/4	Grey colour Modular Distribution Terminal Block with 8 outputs of 6 sq.mm	10
CMDB6/10	Grey colour Modular Distribution Terminal Block with 20 outputs of 6 sq.mm	5

### ACCESSORIES

IMAGES	CAT. NO.	DESCRIPTION	STD. PACK
	CA501-1M	Din 32 Rail unslotted 1 meter	50
	CA501-1M-S	Din 32 Rail slotted 1 meter	50
	CA501-2M	Din 32 Rail unslotted 2 meter	50
	CA501-2M-S	Din 32 Rail slotted 2 meter	50
	CA701-1M	Din 35 Rail unslotted 1 meter	50
	CA701-2M	Din 35 Rail unslotted 2 meter	50
	CA701-2M-S	Din 35 Rail slotted 2 meter	50
	CA701-1M-S	Din 35 Rail slotted 1 meter	50
	CA701-15-1M	Din 35 Rail 15 deep unslotted 1 meter	50
	CA701-15-1M-S	Din 35 Rail 15 deep slotted 1 meter	50
	CA701-15-2M	Din 35 Rail 15 deep unslotted 2 meter	50
	CA701-15-2M-S	Din 35 Rail 15 deep slotted 2 meter	50
	CA702	End Clamp in Polyamide 66 suitable for Din 32 / Din 35 / Din 35-15 Rails	50
	CA802	End Clamp in Polyamide suitable for Din 35 / Din 35-15 Rails	50
	CA509/K8	Marking Tag with Vertical printing.	100
	SWL6	Warning label suitable for 8mm wide terminal block	50
	SCS0.8/4	Electricians Screwdriver for slotted screws	10

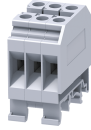
### APPROVALS



### NOTES

This Terminal Blocks are also available in Red, Yellow, Blue, Black & Green colour.

CMDB6



**connectwell**  
THE RIGHT CONNECTION

RATINGS AS PER STANDARDS

STANDARDS	UL 1059	IEC/EN60947-7-1
Approvals	UL	CE
Conductor Cross Section Stranded min.	22 AWG	1.5 mm <sup>2</sup>
Conductor Cross Section Stranded max.	8 AWG	6 mm <sup>2</sup>
Rated Voltage	600 V	1000 V
Rated Current	50 A	41 A
Tightening Torque	14 lb-in	0.8 Nm