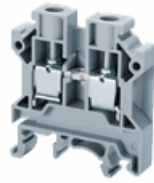


CTS6U



6 sq.mm Feed Through Terminal Blocks

6 sq.mm Feed Through Terminal Blocks are the most Versatile terminals for control, Automation, Instrumentation and Power Distribution applications. A specially designed flexible foot enable easy mounting and dismounting from the Din rail with the help of screw driver. These Terminal Blocks have marker holding recesses to accept marking tags for circuit identification. Cross connection can be achieved with the aid of shorting links / sleeves & screws.

TECHNICAL DATA

| | |
|----------------------------|------------------------------|
| Rated Voltage | 1000 V |
| Rated Current | 41 A |
| Tightening Torque | 0.8 Nm |
| Housing Material | Polyamide |
| Comparative Tracking Index | 1 |
| Standard Colour | Grey |
| Type of Connection | Screw Clamp |
| Product Function | Feed Through |
| Wire Entry Orientation | Side Entry |
| Mounting Possibility | DIN 32/DIN 35/DIN 35-15 Rail |
| Screw Size | M3.5 |
| Operated by | Screwdriver |
| Rated Surge Voltage | 8 KV |
| Pollution Degree | 3 |

CONNECTION DATA

| | |
|---|---------------------|
| Conductor Cross Section Stranded min. | 0.5 mm ² |
| Conductor Cross Section Stranded max. | 6 mm ² |
| Conductor Cross Section AWG/Kcmil min | 22 AWG |
| Conductor Cross Section AWG/Kcmil max | 8 AWG |
| Conductor Cross Section Stranded with Ferrule/Lug min | 0.5 mm ² |
| Conductor Cross Section Stranded with Ferrule/Lug max | 6 mm ² |
| 2 Conductors with same Cross Section Stranded min | 0.5 mm ² |
| 2 Conductor with same Cross Section Stranded max | 4 mm ² |
| Conductor Cross Section Solid min | 0.5 mm ² |
| 2 Conductors with same Cross Section Stranded with TWIN Ferrule/Lug min | 0.5 mm ² |
| 2 Conductor with same Cross Section Stranded with TWIN Ferrule/Lug max | 4 mm ² |
| Stripping Length | 9 mm |
| Internal Cylindrical Gauge | A5 |

DIMENSIONS

| | |
|----------------------------------|---------|
| Height with DIN 32 rail | 52.8 mm |
| Height with DIN 35 x 15 mm rail | 55.5 mm |
| Height with DIN 35 x 7.5 mm rail | 47.8 mm |

DIMENSIONS....

| | |
|-------------------|-------|
| Length | 43 mm |
| Width (Thickness) | 8 mm |

APPROVALS



ORDERING INFORMATION

| CAT. NO. | DESCRIPTION | STD. PACK |
|----------|--|-----------|
| CTS6U | 6 sq.mm Feed Through Terminal block in Grey colour | 100 |
| CTS6UBG | 6 sq.mm Feed Through Terminal Block in Beige colour | 100 |
| CTS6UBK | 6 sq.mm Feed Through Terminal block in Black colour | 100 |
| CTS6UBU | 6 sq.mm Feed Through Terminal block in Blue colour | 100 |
| CTS6UGN | 6 sq.mm Feed Through Terminal block in Green colour | 100 |
| CTS6UO | 6 sq.mm Feed Through Terminal Block in Orange colour | 100 |
| CTS6UR | 6 sq.mm Feed Through Terminal block in Red colour | 100 |
| CTS6UW | 6 sq.mm Feed Through Terminal Block in White colour | 100 |
| CTS6UY | 6 sq.mm Feed Through Terminal block in Yellow colour | 100 |

ACCESSORIES

| IMAGES | CAT. NO. | DESCRIPTION | STD. PACK |
|--------|------------|-------------------------------|-----------|
| | CA501-1M | Din 32 Rail unslotted 1 meter | 50 |
| | CA501-1M-S | Din 32 Rail slotted 1 meter | 50 |
| | CA501-2M | Din 32 Rail unslotted 2 meter | 50 |
| | CA501-2M-S | Din 32 Rail slotted 2 meter | 50 |
| | CA701-1M | Din 35 Rail unslotted 1 meter | 50 |
| | CA701-2M | Din 35 Rail unslotted 2 meter | 50 |
| | CA701-2M-S | Din 35 Rail slotted 2 meter | 50 |
| | CA701-1M-S | Din 35 Rail slotted 1 meter | 50 |

| ACCESSORIES | | | |
|---|---------------|---|-----------|
| IMAGES | CAT. NO. | DESCRIPTION | STD. PACK |
|  | CA701-15-1M | Din 35 Rail 15 deep unslotted 1 meter | 50 |
| | CA701-15-1M-S | Din 35 Rail 15 deep slotted 1 meter | 50 |
| | CA701-15-2M | Din 35 Rail 15 deep unslotted 2 meter | 50 |
| | CA701-15-2M-S | Din 35 Rail 15 deep slotted 2 meter | 50 |
|  | CA702 | End Clamp in Polyamide 66 suitable for Din 32 / Din 35 / Din 35-15 Rails | 50 |
| | CA802 | End Clamp in Polyamide suitable for Din 35 / Din 35-15 Rails | 50 |
|  | EP6/10U | End Plate in Grey colour | 50 |
| | EP6/10UBU | End Plate in Blue colour | 50 |
|  | PP6/10U | Partition Plate in Grey colour suitable for CTS6U / CTS10U Terminal Block | 50 |
|  | SP6/10U | Separator Plate in Grey colour | 100 |
|  | CA723/2 | Pre Assembled Shorting Link assemblies with 2 poles | 100 |
| | CA723/3 | Pre Assembled Shorting Links assemblies with 3 poles | 50 |
| | CA723/4 | Pre assembled Shorting Link assemblies with 4 poles | 50 |
| | CA723/5 | Pre assembled Shorting Link assemblies with 5 poles | 50 |
| | CA723/6 | Pre assembled Shorting Link assemblies with 6 poles | 10 |
| | CA723/7 | Pre assembled Shorting Link assemblies with 7 poles | 10 |
| | CA723/10 | Pre Assembled Shorting Links assemblies with 10 poles | 10 |
|  | CA743/2 | Insulated Pre assembled Shorting Link for 2 way shorting | 100 |
| | CA743/3 | Insulated Pre assembled Shorting Link for 3 way shorting | 50 |
| | CA743/4 | Insulated Pre assembled Shorting Link for 4 way shorting | 50 |
| | CA743/10 | Insulated Pre assembled Shorting Link for 10 way shorting | 10 |
|  | CA710/2 | External Comb Type Shorting Link available in 2 Pole | 100 |
| | CA710/3 | External Comb Type Shorting Link available in 3 Pole | 50 |
| | CA710/4 | External Comb Type Shorting Link available in 4 Pole | 50 |
| | CA710/10 | External Comb Type Shorting Link available in 10 Pole | 20 |

| ACCESSORIES | | | |
|---|-------------|---|-----------|
| IMAGES | CAT. NO. | DESCRIPTION | STD. PACK |
|  | CA703/2 | Permanent Shorting Link for 2 way shorting | 100 |
| | CA704/2 | Permanent Shorting Link for 3 way shorting | 100 |
| | CA704/2 | Permanent Shorting Link for 3 way shorting | 100 |
| | CA734/10 | Permanent Shorting Link for 10 way shorting | 100 |
|  | CA707/S/Q/1 | Shorting Sleeve and Screw | 100 |
|  | CA706/2 | Removable Shorting link suitable for CTS6U | 100 |
|  | CA707/L/Q/1 | Long Sleeves & Screws | 100 |
|  | CA509/K8/V | Marking Tag with Vertical printing. | 100 |
| | SWL6 | Warning label suitable for 8mm wide terminal block | 50 |
|  | CA707/TS/05 | Test Socket suitable for CTS6U / CTS10U Terminal Blocks | 100 |
|  | SCS0.8/4 | Electricians Screwdriver for slotted screws | 10 |

| RATINGS AS PER STANDARDS | | | |
|---------------------------------------|---------------------|---------------------|---------------------------|
| STANDARDS | UL 1059 | CSA C.22.2 No:158 | DIN EN60947-7-1 |
| Approvals | UL | CSA | VDE |
| Conductor Cross Section Stranded min. | 22 AWG | 22 AWG | 1.5 mm ² |
| Conductor Cross Section Stranded max. | 8 AWG | 8 AWG | 6 mm ² |
| Rated Voltage | 600 V | 600 V | 800 V |
| Rated Current | 50 A | 50 A | 41 A |
| Tightening Torque | 14 lb-in | 14 lb-in | 0.8 Nm |
| STANDARDS | IEC/EN60947-7-1 | EN60079-7 | IEC 60079-0 & IEC 60079-7 |
| Approvals | CE | ATEX | AEx |
| Conductor Cross Section Stranded min. | 0.5 mm ² | 1.5 mm ² | 22 AWG |
| Conductor Cross Section Stranded max. | 6 mm ² | 6 mm ² | 8 AWG |
| Rated Voltage | 1000 V | 690 V | 600 V |
| Rated Current | 41 A | 36 A | 50 A |
| Tightening Torque | 0.8 Nm | 0.8 Nm | 14 lb-in |
| Operating Temperature Range | | -40 to +85 °C | |
| STANDARDS | EN60079-7 | | |
| Approvals | ATEX-IECex | | |
| Conductor Cross Section Stranded min. | 1.5 mm ² | | |
| Conductor Cross Section Stranded max. | 6 mm ² | | |
| Rated Voltage | 690 V | | |
| Rated Current | 36 A | | |
| Tightening Torque | 0.8 Nm | | |