

Power contactors without handle CX³

from 16 A to 63 A



4 125 05

4 125 35

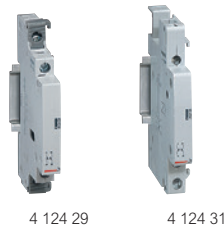
Dimensions **see e-catalogue**
 Technical characteristics **p. 80**

Conform to IEC/EN 61095
 Space for power supply busbar on top (up to 25 A)

Pack	Cat.Nos	Power contactors with 24 V~ coil		
2-pole - 250 V~				
1	4 125 03	I max 16 A	Connection 	Type of contact N/C + N/O Number of modules 1
1	4 125 05	25 A		2 N/O 1
4-pole - 400 V~				
1	4 125 10	25 A		4 N/O 2
1	4 125 09	25 A		2 N/C + 2 N/O 2

Pack	Cat.Nos	Power contactors with 230 V~ coil		
2-pole - 250 V~				
4	4 125 21	I max 16 A	Connection 	Type of contact N/C + N/O Number of modules 1
10	4 125 23	25 A		2 N/O 1
1	4 125 27	63 A		2 N/O 2
1	4 125 24	25 A		2 N/C 1
4-pole - 400 V~				
5	4 125 35	25 A		4 N/O 2
1	4 125 41	63 A		4 N/O 3
1	4 125 36	25 A		4 N/C 2
1	4 125 33	25 A		2 N/C + 2 N/O 2

Auxiliaries for contactors CX³



4 124 29

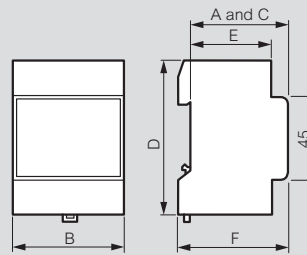
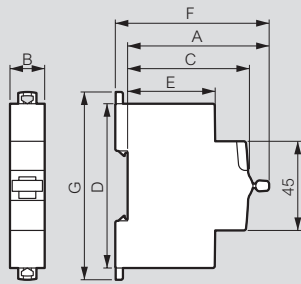
4 124 31

Pack	Cat.Nos	Signalling auxiliaries for contactors		
Auxiliary changeover switch for all CX ³ contactors Used to signal the position status of the contacts on the product to which it is connected				
For 1 module contactors 16 A to 25 A Maximum 2 auxiliary devices per contactor Fitted on left-hand side of contactor				
1	4 124 29	I max 5 A	Voltage 250 V~	Contact N/C + N/O Number of modules 0.5
For 2 module contactors 25 A Maximum 2 auxiliary devices per contactor Fitted on left-hand side of contactor				
1	4 124 30	5 A	250 V~	N/C + N/O 0.5
For 40 and 63 A contactors Maximum 1 auxiliary device per contactor Fitted on left-hand side of contactor				
1	4 124 31	5 A	250 V~	N/C + N/O 0.5

For detailed dimensions,
see e-catalogue



Dimensions of din-rail equipment

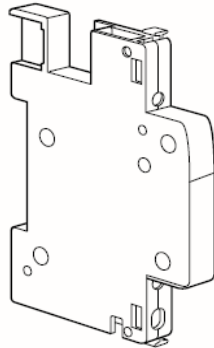


Product	A		B				C	D	E	F	G
	1P	1P+ N	2P	3P	4P						
RX³ MCBs	71.7	17.7	35.4	35.4	53.1	70.8	61	83	44	77.8	88.9
RX³ RCCBs	71.7			35.6		71.2	61	83	44	77.8	88.9
TX³ MCBs	71.7	17.7	35.4	35.4	53.1	70.8	61	83	44	77.8	88.9
TX³ RCCBs	71.7			35.6		71.2	61	83	44	77.8	88.9
Isolating switches DX³	71.7	17.8		17.8/ 35.4	35.6/ 53.1	70.8	61	83	44	77.8	94.8
Remote trip head isolating switches DX³ up to 63A - 1 mod/pole	71.7			35.4	53.1	70.8	61	83	44	77.9	94.8
Remote trip head isolating switches DX³ 100/125A - 1.5 mod/pole	73				80.1	106.8	61	96	47	79	104.3
DX³ RCCBs	71.7			35.6		71.2	61	83	44	77.8	94.8
1P DX³ RCBOs (up to 45A)	68	17.7					60	115	48	74	126.8
1P+N DX³ RCBOs (up to 40A) & 4P (up to 32A)	71.7		35.6			71.2	61	83	44	77.8	94.8
2P & 4P DX³ RCBOs (40A to 63A)	72			71.2		124.6	61	96	44	78.2	107.8
1P+N DX³ MCBs 1 mod	71.7		17.8				61	83	44	77.8	94.8
DX³ MCBs - 1 mod/pole	71.7	17.7	35.4	35.4	53.1	70.8	61	83	44	77.8	94.8
DX³ MCBs - 1,5 mod/pole	73.1	26.7		53.4	80.1	106.8	61	100	47	79	104.3
DX³ add-on modules up to 63A - 1 mod/pole	72			35.6	53.4	53.4	61	96	44	78.2	107.8
DX³ add-on modules up to 63A - 1.5 mod/pole	72			35.6	53.4	53.4	61	96	47	78.2	116.7
DX³ add-on modules 80 to 125A - 1.5 mod/pole	72			71.2	106.8	106.8	61	114	47	78.2	129
DX³ auxiliaries	71.5			8.8 / 17.7			61	83	44	77.7	84.5
DX³ remote control	74.3			17.7 / 35.4			61	83	44	80.5	98.8
DX³ Stop&Go automatic resetting	74.3			35.4			61	83	44	80.5	113.7
Change-over switches	68	17.7		35.6			60	83	44	74	94
CX³ latching relays	64	17.8		17.8	35.6	35.6	61	84.5	44	70.2	94.8
CX³ contactors up to 25A	66.3/ 61	17.8		17.8	35.6	35.6	61	84.5	44	72.6/ 67.3	94.8
CX³ contactors 40A & 63A	62			35.6	53.4	53.4	60	83	44	68	94
Auxiliaries for CX³ contactors and latching relays	61			9/17.8			61	84.5	44	67	84.5
Push-buttons / control switches	68			17.7			60	83	44	74	94
Indicators	68			17.7			60	83	44	69	94
Bells and buzzers	60			17.7			60	76	44	66	85
Light sensitive switches											
Cat.Nos 0 037 21, 4 126 23	60			35.6			60	85	37.5	66	70
Socket outlets	60			44.5			60	83	44	66	92
Time delay relays	60			17.7			60	83	44	66	94
Remote control dimmers											
Cat.No 0 036 58	60			36			60	83	44	66	94
Cat.No 0 036 60	60			72			60	83	44	66	94
Cat.No 0 036 71	60			108			60	83	44	66	94

Description	A	B	C	D	E	F
Programmable time switches						
0 037 05	60	17.8	60	83	44	66
4 127 80/90/94	60	17.8	60	83	44	66
4 127 95, 4 128 12/13	60	53	60	83	44	66
4 126 31/33/41	60	35.6	60	83	44	66
4 126 54/57	60	35.6	60	83	44	66
0 047 70	60	90	60	83	44	66
Transformers and power supplies						
0 042 10/30/31	60	72	60	83	44	66
4 130 91	60	35.8	60	83.5	44	66
4 130 92/93/96	60	71.5	60	83.5	44	66
4 130 98	60	89	60	94	44	66
0 047 91/92	60	105	60	95	44	66
4 131 05/06/07/08	60	89	60	95	44	66
0 047 93	60	70	60	95	44	66
Residual current relay						
0 260 88	60	35.5	60	89	44	66

Signalling auxiliary switch for contactors 40 A and 63 A

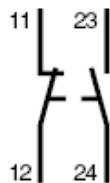
Référence(s) : 412 431



SOMMAIRE	PAGES
1. Caractéristiques techniques	1
2. Installation	1
3. Marquage	2
4. Côtés d'encombrement.....	2

1. TECHNICAL CHARACTERISTICS

Symbol :



Technology :

. Mechanical « NO+NC » change-over switch

Range :

. Auxiliary 0.5 module (0.5x17.5mm) ref 4124 31

Compatibility :

. Auxiliary 4124 34 can be associated only with Contactors 40/63A

Rated current :

. $I_n = 6 \text{ A} \sim$

Rated voltage :

. $U_n = 250 \text{ V} \sim$

Rated frequency :

. 50 / 60 Hz

Temperatures :

. Operating temperature: from -5°C to $+40^\circ\text{C}$
. Storage temperature: from -25°C to $+60^\circ\text{C}$

Protection degree :

. Terminal ingress protection : IP20 (device connected)
. Front face ingress protection : IP40
. Protection against mechanical shocks : IK02

1. TECHNICAL CHARACTERISTICS *(continued)*

Isolation :

. $> 2.5 \text{ mm}$

Endurance :

. 100 000 operating cycles with no load
. 30 000 operating cycles with AC12 load according EN 60947-5-1

Moulded case material :

. Polyamid

Characteristics of the plastic material :

. Resistance to glow wire according to IEC 695-2-1

Weight :

. 0.038 kg

Packaged volume :

. Volume : 0.2 dm^3
. packaged by one piece

2. INSTALLATION

Installation software :

. XL PRO

Tools recommended :

. For terminals : screwdriver, insulated or not, Pozidriv n° 1 or slotted 4 mm.

Connection :

. Type of terminal : cage terminals
. Location to allow the passage of prong busbars
. Terminal depth : 8 mm
. Terminal capacity :
- $1 \times 2.5 \text{ mm}^2$ flexible (with or without ferrule) ou rigid cable ou
- $2 \times 1.5 \text{ mm}^2$ flexible (with or without ferrule) or rigid cables
. Tightening torque : mini = $0,4 \text{ Nm}$ // max. = 0.8 Nm

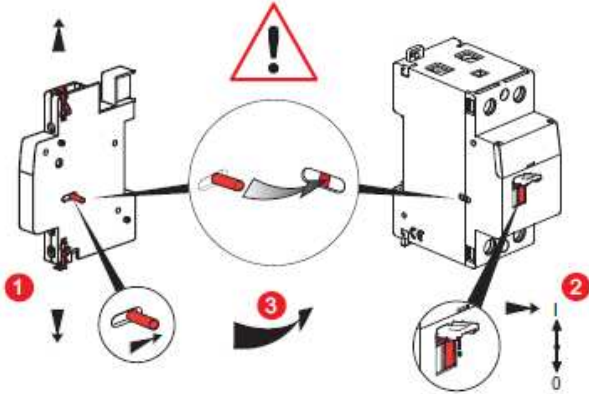
Signalling auxiliary switch for contactors 40 A and 63 A

Référence(s) : 412 431

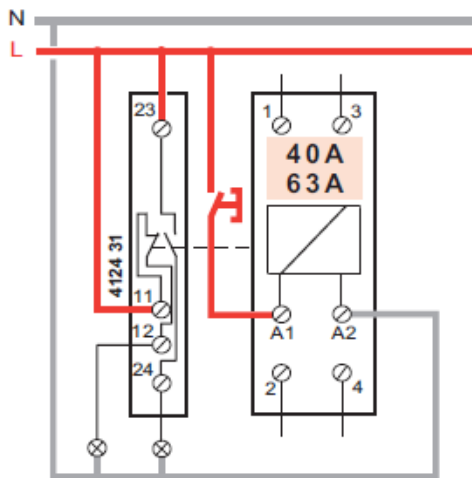
2. INSTALLATION (continued)

Use:

- . Auxiliaries are fitted on Legrand Contactors 40/63A left side
- Only one auxiliary with the Contactor

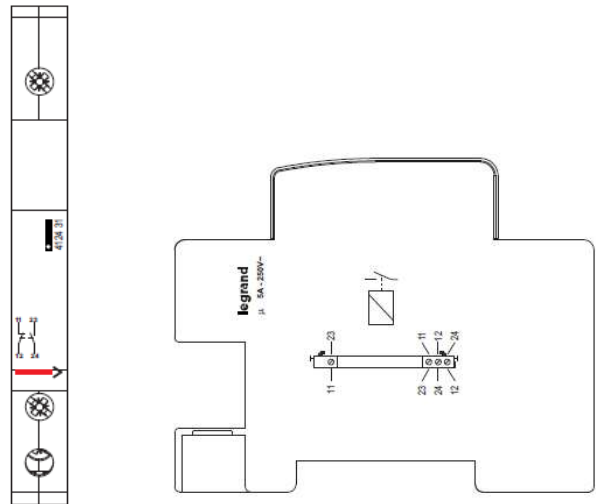


- Use to signal the position status of the contacts of the device with witch it is associated.



3. MARKING

- . Front face and side face, by permanent ink pas printing



4. OVERALL DIMENSIONS

