

Arteor™

hotel equipment - BUS and Radio scenario controllers



5745 87



5745 91

Cover plates selection chart p. 108-111

Pack	Cat.Nos	Scenario controllers with specific marking
		<p>Radio controls 4-scenes micropush control Surface mounting, no wiring needed For BUS or radio installations Mechanisms equipped with White or Black round cover plate and Magnesium circular push control for 4 scenarios Supplied with support frames and batteries To be equipped with plates 2 modules 45 x 45 mm</p>
1	White 5740 87 Black 5745 87	<p>"wake up / sleep / TV / relax" marking</p>
1	5740 88 5745 88	<p>"wake up / sleep / open curtains / close curtains" marking</p>
		<p>Touch plates for radio controls 4-scenes touch plate British standard fixing centres</p>
1	5740 90 5745 90	<p>"wake up / sleep / TV / relax" marking Can replace standard rocker plates and plates on 4-scenes radio controllers Cat.Nos 5740 87, 5745 87</p>
1	5740 93 5745 93	<p>"wake up / sleep / open curtains / close curtains" marking Can replace standard rocker plate and plates on 4-scenes radio controllers Cat.Nos 5740 88, 5745 88</p>
		<p>BUS controls 4-scenes touch control for the activation of 4 scenarios: "wake up / sleep / TV / relax" 2 modules mechanisms For British standard flush-mounting boxes</p>
1	5740 89 5745 89	
1	5740 91 5745 91	<p>6-scenes touch control for the activation of 6 scenarios: "wake up / sleep / TV / relax / open curtains / close curtains" 3 modules mechanisms For British, Italian and American flush-mounting boxes</p>
		<p>Accessories Sheet with stickers with symbols for different scenarios for hotel rooms</p>
1/100	5740 92	Dark colour
1/100	5745 92	White colour

Complete home automation solutions (see p. 112-150)

Arteor™

hotel equipment - key fob switches, shaver sockets



5727 30



5721 53

Cover plates selection chart p. 108-111
Technical data p. 81-99

Pack	Cat.Nos	Key fob switches
		<p>For energizing a circuit by inserting a key fob Cat.Nos 5722 59 and 5727 59 or a smart card (access card for a hotel room) Example of use: hotel room power supply only when guest is present Time-delay of approx. 30 sec. after card removal To be equipped with single pole latching relay Cat.Nos 5722 27 and 5727 27 2 modules 45 x 45 mm</p>
1/20	White 5722 30 Magnesium 5727 30	<p>Key fob switch 230 V</p>
		<p>Key fob</p>
10/50	White 5722 59 Magnesium 5727 59	<p>Key fob Enables use of key fob switches in hotels with key locks Supplied complete with a label holder for individual hotel identification</p>
		<p>Shaver sockets Conform to BS EN 61558-2-5. IP 24 For use with European, British, American, Australian 2-pin plugs Screwless live and neutral terminals Double wound isolating transformer Automatic self-resetting overload feature Plug insertion operates micro-switch which energises transformer To be equipped with BS 2 gang - 3 modules plates For flush-mounting boxes, use BS 2 gang box depth 48 mm, US type, italian type boxes depth 48 mm Power supply: 230 V - 50/60 Hz 3 modules 67.5 x 45 mm</p>
1	White 5721 53 Magnesium 5726 53	<p>230 V / 120-230 V With earth connector</p>

Arteor™

biometric reader and key fob switches

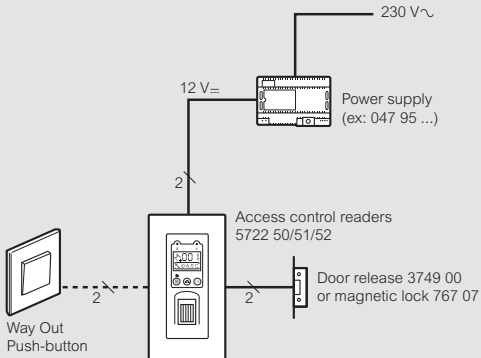
Arteor™

hotel bedroom call indicator and internal control unit

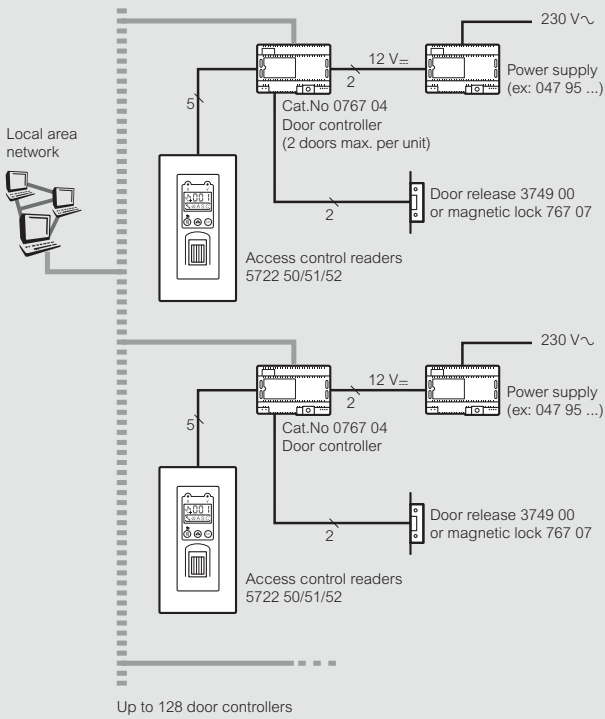
Technical data

Biometric reader

Stand-alone

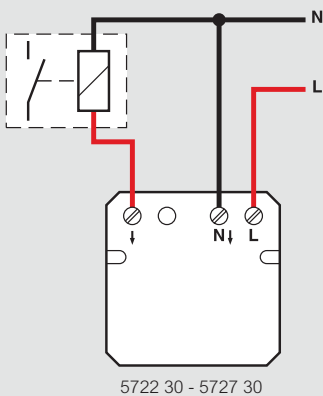


Centralized



Key fob switches

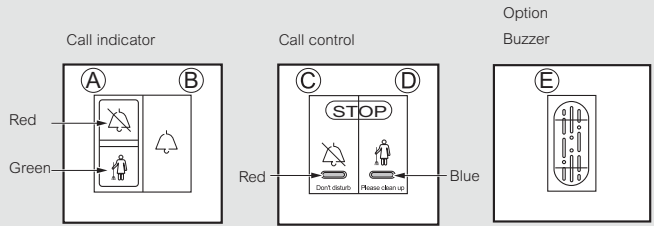
Cat.Nos 5722 30/5727 30



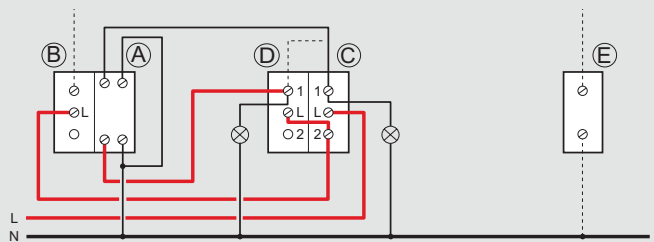
Technical data

Cat.Nos 5720 67/74 - 5725 67/74, 5734 58/61 - 5736 58/61

Description

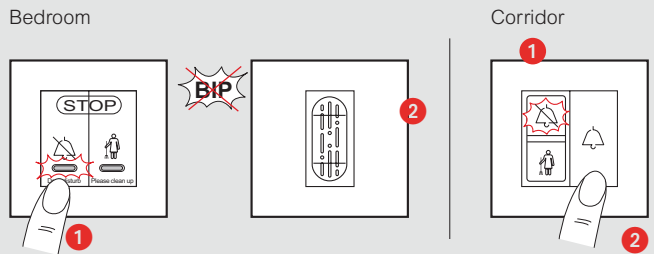


Wiring

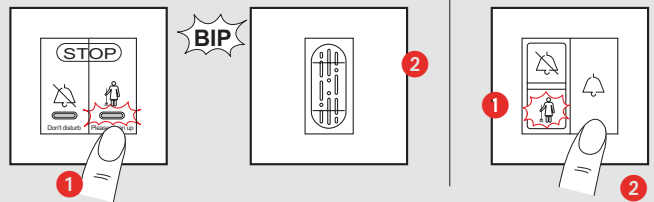


Operation

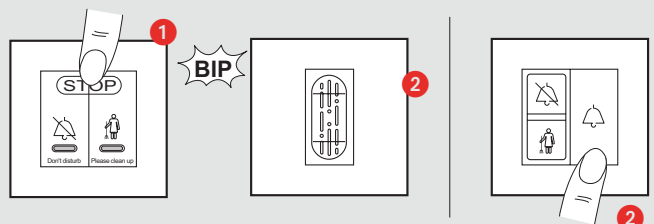
1- Instruction : «Do not disturb»



2- Instruction : «Please clean up»



3- No call



Note : If both buttons are pressed simultaneously, priority is given to the «don't disturb» call

