

**NEW**

## Myrius™ sockets and connectors - black



6731 52



6731 53

*Technical data (p. 329-334)*

Pack	Cat. nos.	Data & voice	
20/200	<b>6731 52</b>		RJ-11 Telephone Socket with transparent shutter
20/200	<b>6731 53</b>		RJ-11 Double Telephone Socket with shutter
20/200	<b>6731 54</b>		UTP Cat 5e RJ 45 information outlets
20/200	<b>6731 55</b>		UTP Cat 6
10/100	<b>6731 56</b>		UTP Cat 6

## Myrius™ connectors, controllers, protectors and accessories - black



6731 59



6731 63



6731 70

*Technical data (p. 330-334)*

Number of modules	Pack	Cat. nos.	Audio & video connector	Number of modules
1	<b>1/10</b>	<b>6731 57</b>	<b>3 x female RCA</b> For composite video & stereo, audio connection of a DVD drive, camera, video conference.	1
1	<b>10/100</b>	<b>6731 58</b>	<b>3 pole XLR sockets</b> For stereo connection of any peripheral, microphone, mixing console.	2
1	<b>1/10</b>	<b>6731 59</b>	<b>Female HD 15</b> For VGA, XGA or VESA connection of a PC monitor, plasma screen, video projector.	2
2				
	<b>1/10/100</b>	<b>6731 63</b>	<b>Sound (Volume controller)</b> Suitable for 8 Ohms, 3 Watts (RNS) speaker. Rating : 11 steps + OFF (Full rotation type)	Number of modules 2
	<b>1/10/100</b>	<b>6731 30</b>	<b>Motor starter</b> 16 A Motor Starter	Number of modules 2
	<b>1/10/100</b>	<b>6731 31</b>	25 A Motor Starter	2
	<b>20/200</b>	<b>6731 70</b>	<b>VSP</b> Surge Filter (VSP)-230V~	Number of modules 1
	<b>20/200</b>	<b>6731 60</b>	<b>Accessories</b> Cable Outlet - 8mm	Number of modules 1
	<b>20/200</b>	<b>6731 61</b>	Blanking Plate	1

**Myrius™**  
RJ 11

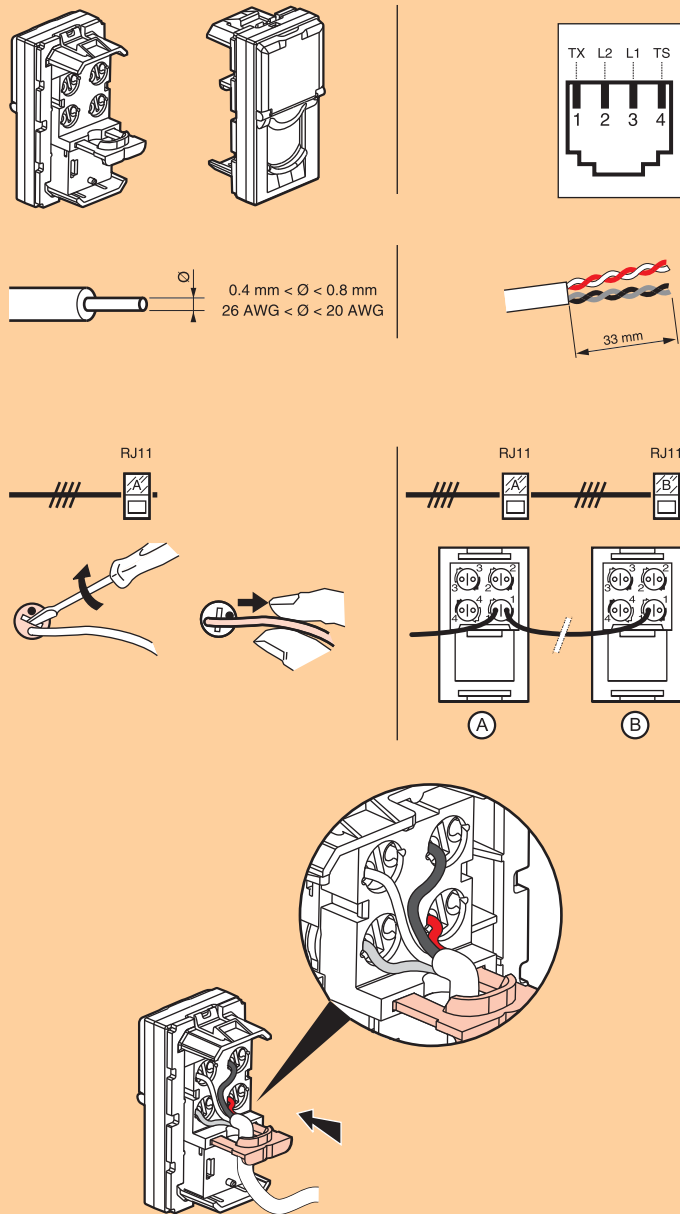
**Myrius™**  
RJ 45

■ **Technical data**

**RJ 11**

Cat. no. 6730 52 - 6731 52

**Wiring diagram**



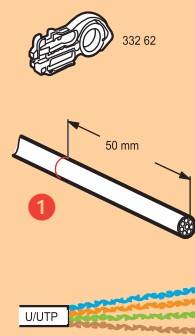
■ **Technical data**

**RJ 45**

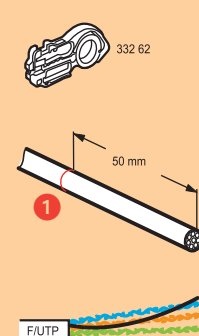
Cat. no. 6730 54 - 6731 54 /  
6730 55 - 6731 55, 6730 56-6731 56

UTP	Cat 5e	6730 54 - 6731 54	
	Cat 6	6730 55 - 6731 55	6730 56 - 6731 56

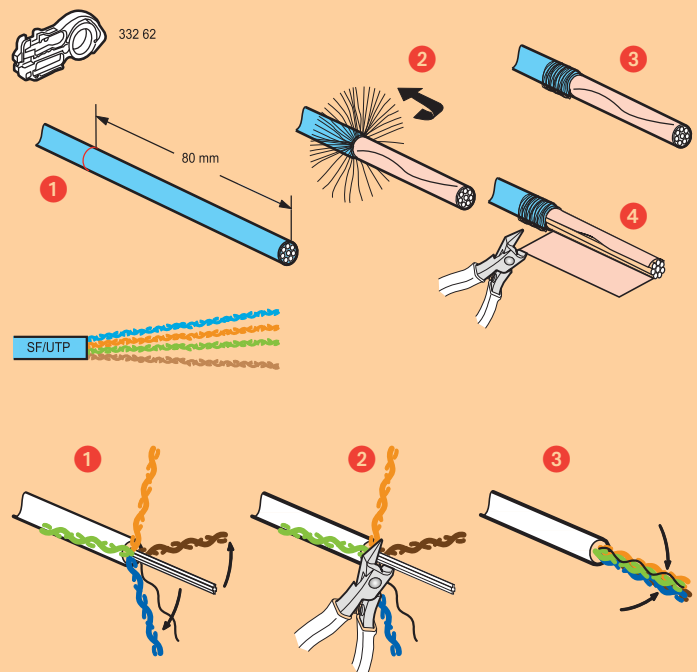
**U/UTP**



**F/UTP**

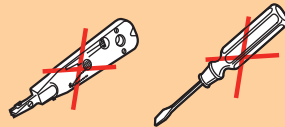
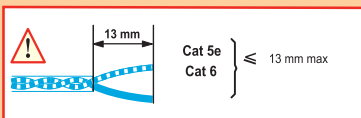
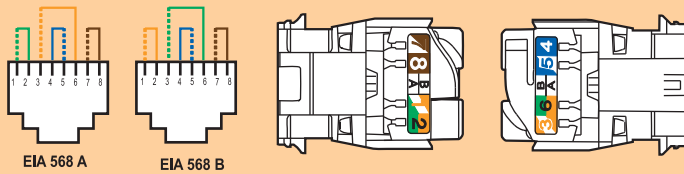


**SF/UTP**

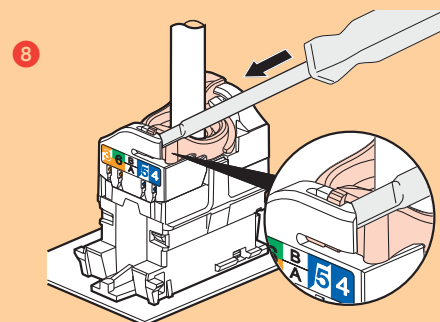
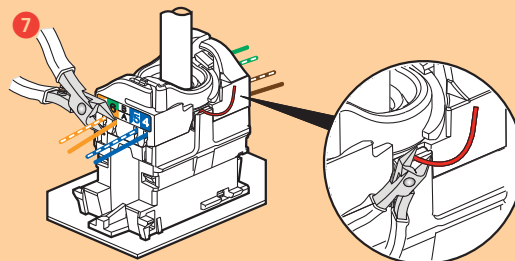
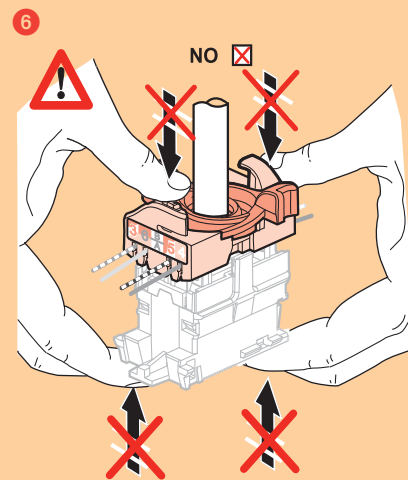
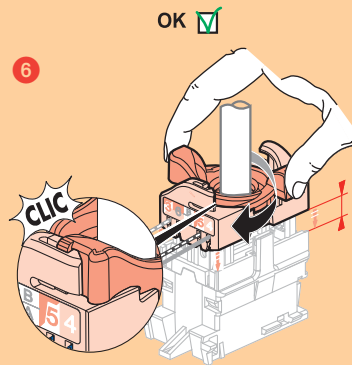
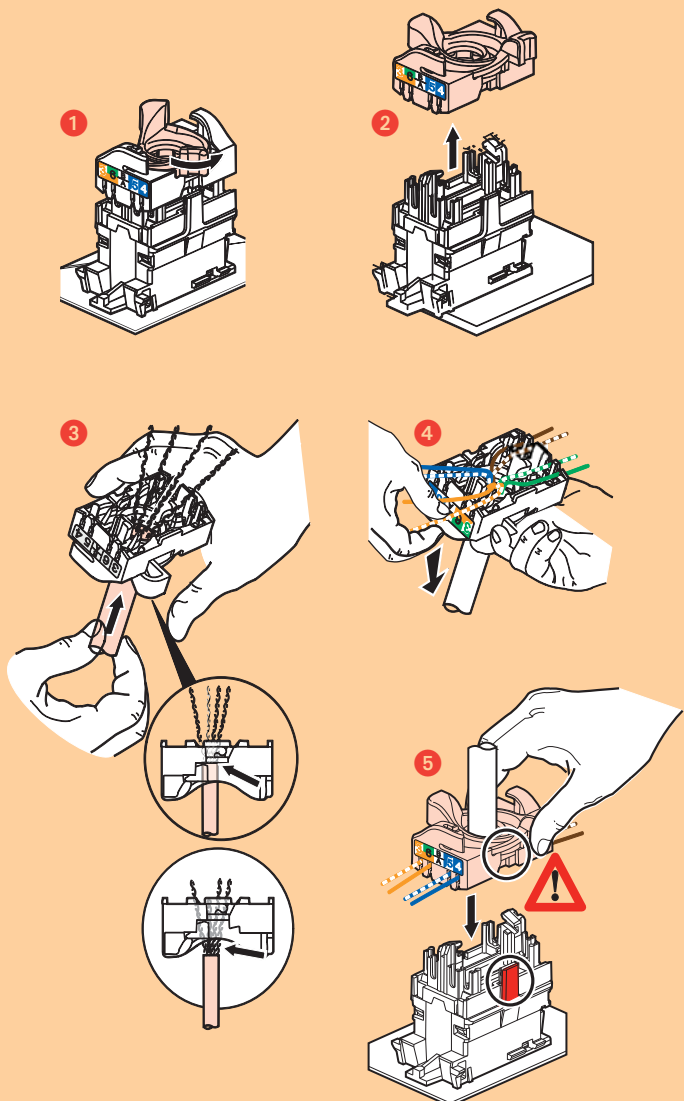


# Myrius™ RJ 45 (continued)

## ■ Technical data



## Wiring Diagram



## ⚠ Safety Instructions

GB IE

This product should be installed in line with installation rules, preferably by a qualified electrician. Incorrect installation and use can lead to risk of electric shock or fire.

Before carrying out the installation, read the instructions and take account of the product's specific mounting location.

Do not open up, dismantle, alter or modify the device except where specifically required to do so by the instructions. All Legrand products must be opened and repaired exclusively by personnel trained and approved by Legrand.

Any unauthorised opening or repair completely cancels all liabilities and the rights to replacement and guarantees.

Use only Legrand brand accessories.

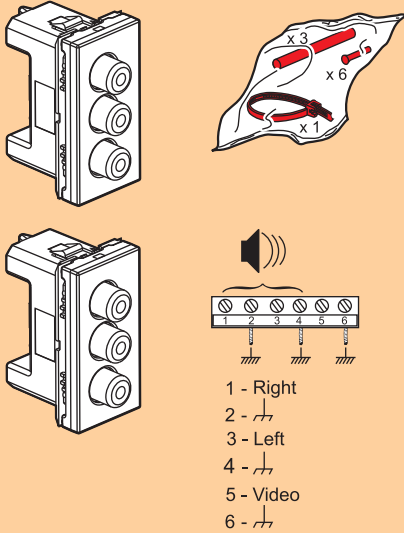
# Myrius™

audio video connector

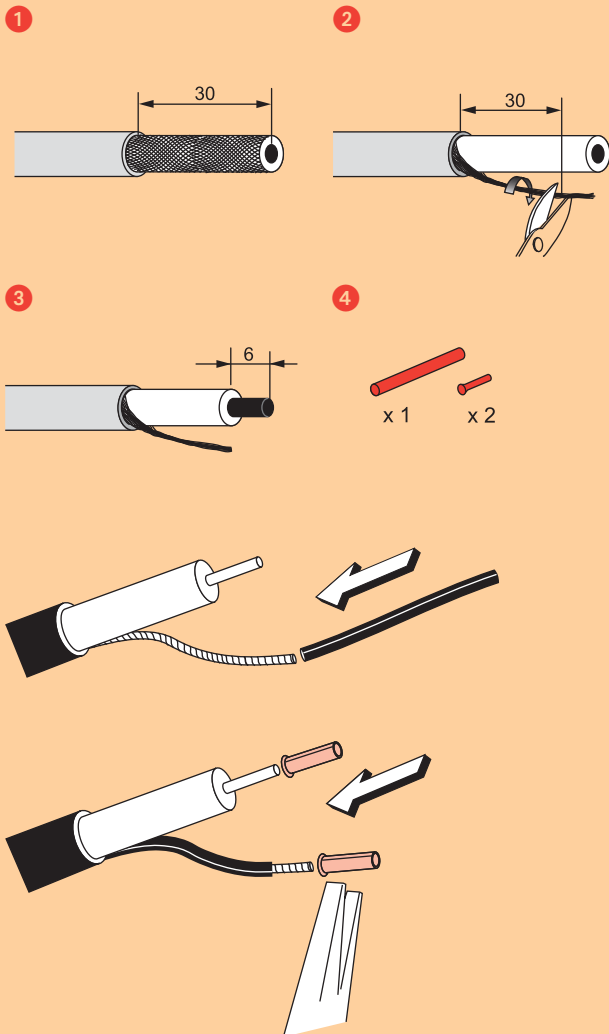
## ■ Technical data

### AV connector

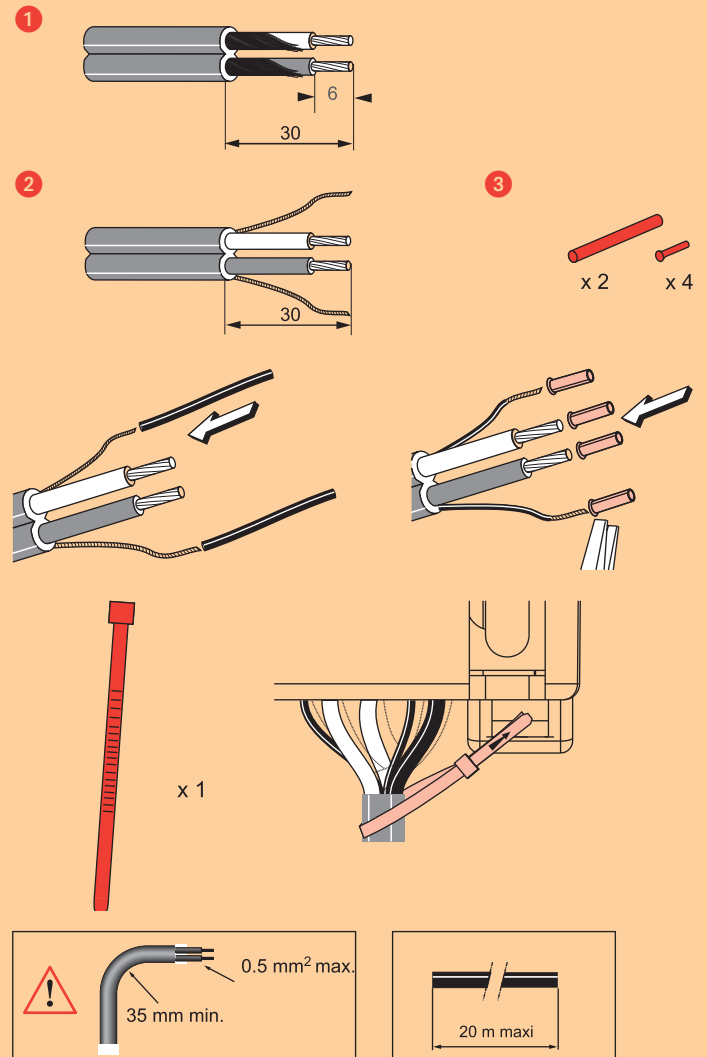
Cat. no. 6730 57 - 6731 57



### Wiring diagram



### AV connector



### ⚠ Safety Instructions



This product should be installed in line with installation rules, preferably by a qualified electrician. Incorrect installation and use can lead to risk of electric shock or fire.

Before carrying out the installation, read the instructions and take account of product's specific mounting location.

Do not open up, dismantle, alter or modify the device except where specifically required to do so by the instructions,

All Legrand products must be opened and repaired exclusively by personnel trained and approved by Legrand.

Any unauthorised opening or repair completely cancels all liabilities and the rights to replacement and guarantees.

Use only Legrand brand accessories.

# Myrius™

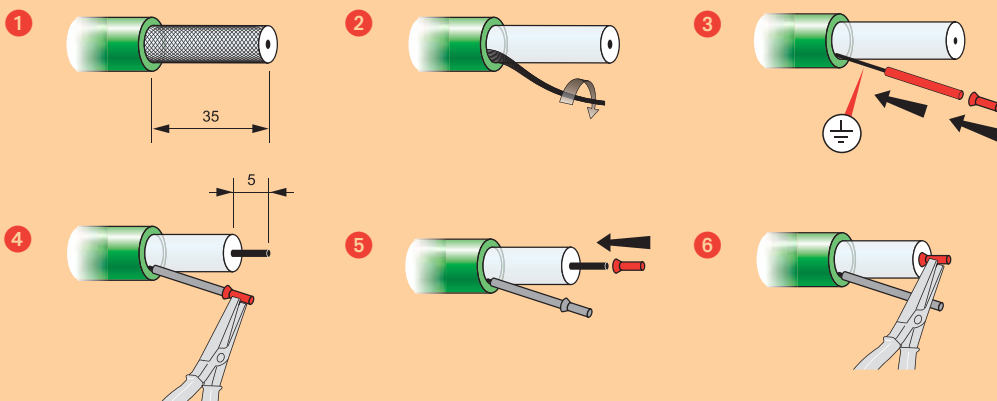
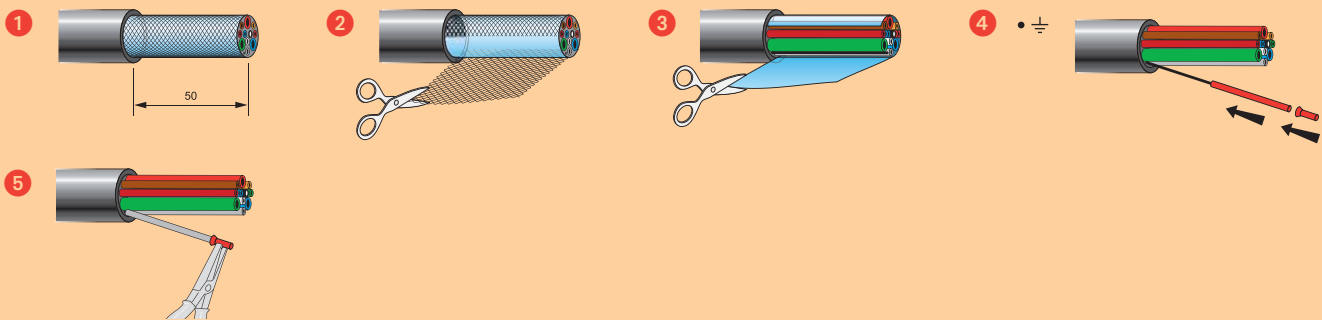
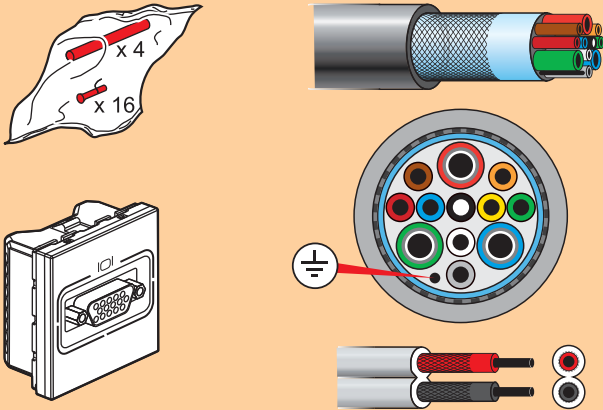
audio video connector (continued)

## ■ Technical data

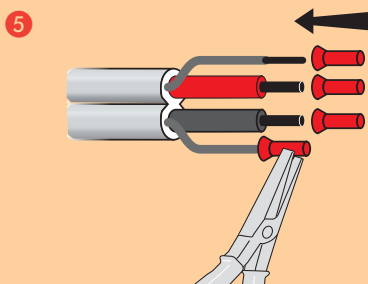
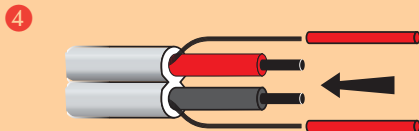
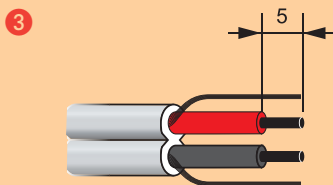
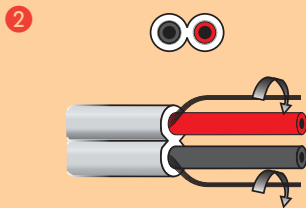
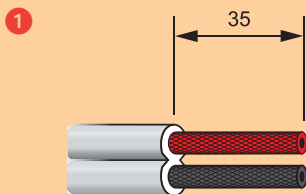
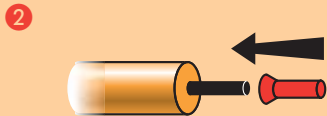
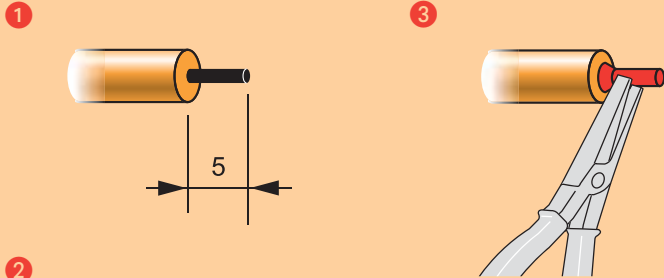
### AV connector

Cat. no. 6730 59 - 6731 59

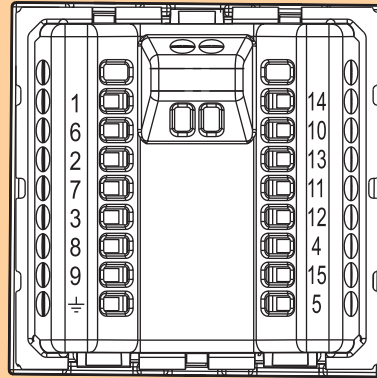
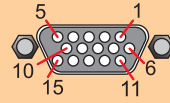
### Wiring diagram of projector connector



**Projector connector**



**Projector connector**



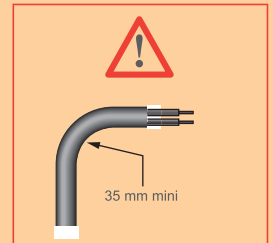
**Terminal block legend (Connector legend)**

**VGA FULL PIN**

- 1 Red coax (red)
- 6 Red braid (red ground)
- 2 Green coax (green)
- 7 Green braid (green ground)
- 3 Blue coax (blue)
- 8 Blue braid (blue ground)
- 9 White
- 14 Green (VS)
- 10 Blue (HS-VS ground)
- 13 Grey (HS)
- 11 Brown (ID Bit 0)
- 12 Yellow (ID Bit 1)
- 4 Orange (ID Bit 2)
- 15 Black (ID Bit 3)
- 5 Red (Gnd)
- General ground

**VGA RGB HS VS**

- 1 Red coax (red)
- 6 Red braid (red ground)
- 2 Green coax (green)
- 7 Green braid (green ground)
- 3 Blue coax (blue)
- 8 Blue braid (blue ground)
- 14 Yellow coax (VS)
- 10 Yellow braid + white (HS-VS ground)
- 13 White coax (HS)
- General ground



**! Safety Instructions**



This product should be installed in line with installation rules, preferably by a qualified electrician. Incorrect installation and use can lead to risk of electric shock or fire.

Before carrying out the installation, read the instructions and take account of the product's specific mounting location.

Do not open up, dismantle, after or modify the device except where specifically required to do so by the instructions. All Legrand products must

be opened and repaired exclusively by personnel trained and approved by Legrand. Any unauthorized opening or repair completely cancels all liabilities and

the rights to replacement and guarantees. Use only Legrand accessories.