

SIEMENS	Data Sheet : Induction Motor Champion Series Motor Type : 1LA2 070-2NC71							
Number of Phases		3						
Rated Output kW		0.37						
Rated Voltage V		415						
Rated Current A		0.79		Reference Standard		IS:12615		
Rated Speed rev/min		2807		Enclosure IS:4691		IP55		
Rated Frequency Hz		50		Cooling IS:6362		IC411		
Rated Torque		0.13 kgf.m / 1.3 Nm		Duty		S1		
Efficiency :		100% load %		75.5		Terminal Box Data	Type	1XB0 096
		75% load %		75.5			Terminal Size	M4
		50% load %		75.5			No. of Terminals	6
Power Factor :		100% load %		0.86		Bearing Data	Max. Cable Section	mm ² 1R 3½C 6mm ²
		75% load %		0.81			Drive End	6202ZZ
		50% load %		0.69			Non-Drive End	6202ZZ
Insulation Class		F		Lubrication		Pre-Lubricated		
Temperature rise (Res.method) K		70		Life L10 hrs. #		50,000		
Locked rotor withstand time		Hot (s)		5		Lifting eyebolt IS:4190		-
		Cold (s)		11		Motor weight (approx.) kg		8
Stator connection		STAR		Rotor		GD ² (4x MI) kgf.m ²		0.001
Rotor Class		KL10				Weight kg		3.6
Ratio of starting current to the rated current		100% voltage		6.0		Construction IS:2253		IMB5
		80% voltage		4.5		Frame designation		71
Ratio of starting torque to the rated torque		100% voltage		2.0		Ambient Temperature °C		50
		80% voltage		1.1		Voltage Variation % ± 10		
Ratio of Breakdown torque to the rated torque		100% voltage		2.4		Frequency variation % ± 5		
		80% voltage		1.4		Combined Voltage & Frequency variation % 10		
								# For directly coupled drives
Data subject to tolerance as per IS:12615.								
Remarks : Unique Identification Code: UIC-4404028 <--- This code must match with the one on Characteristic Curves Sheet.								
No 'IE' marking on nameplate as rating is not covered in IS:12615.								
KALWA, INDIA Department : I DT LD P LV-Motors			Reference Document MTR 2.6-182		Printed & Checked : Date : 18.12.2012		Release Date Aug '2011	

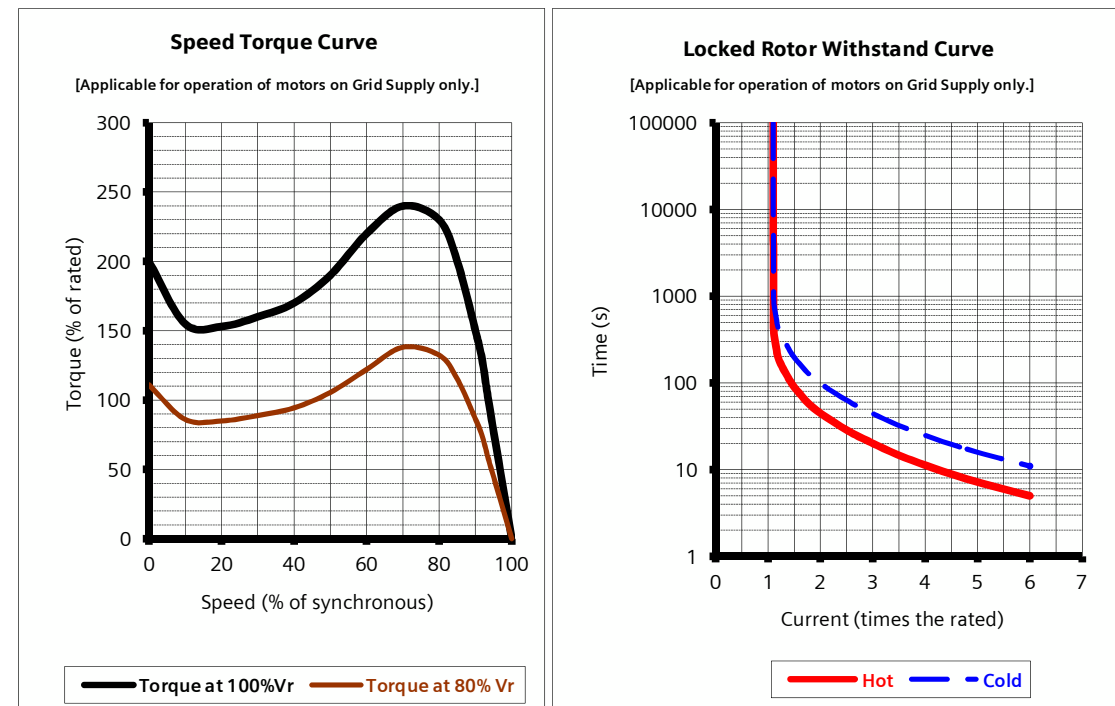
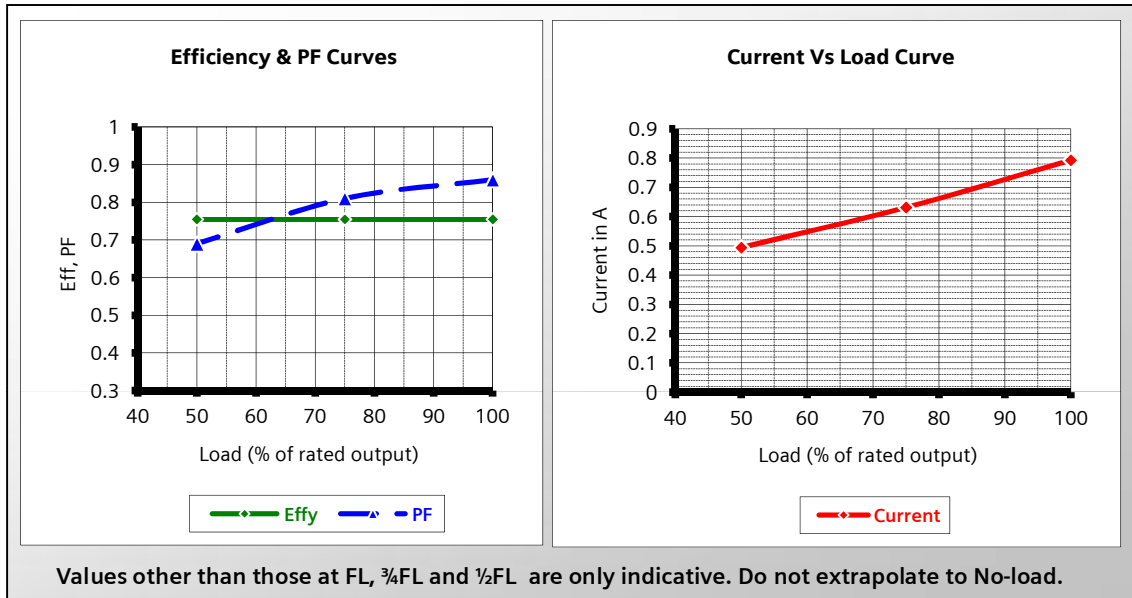
Unique Identification Code: UIC-4404028 <-- This code must match with the one on the Data Sheet.

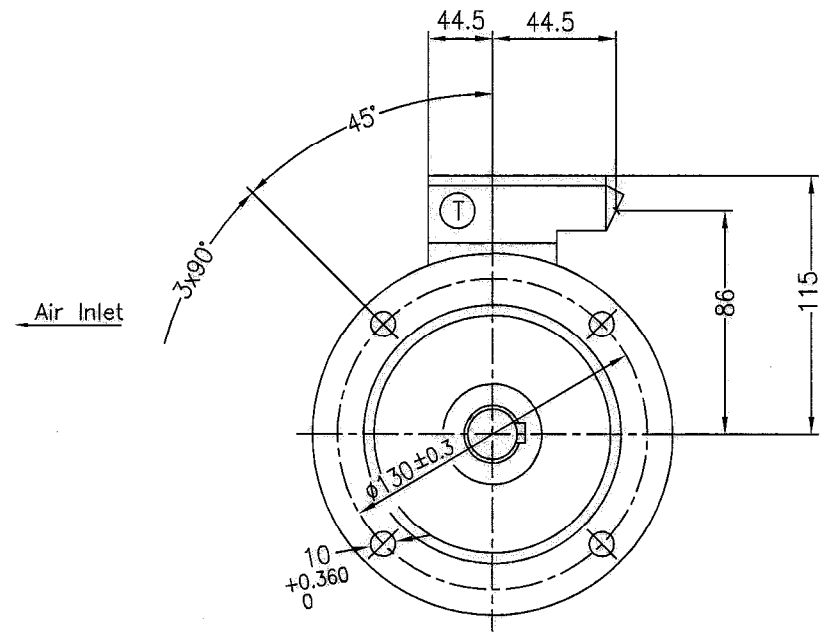
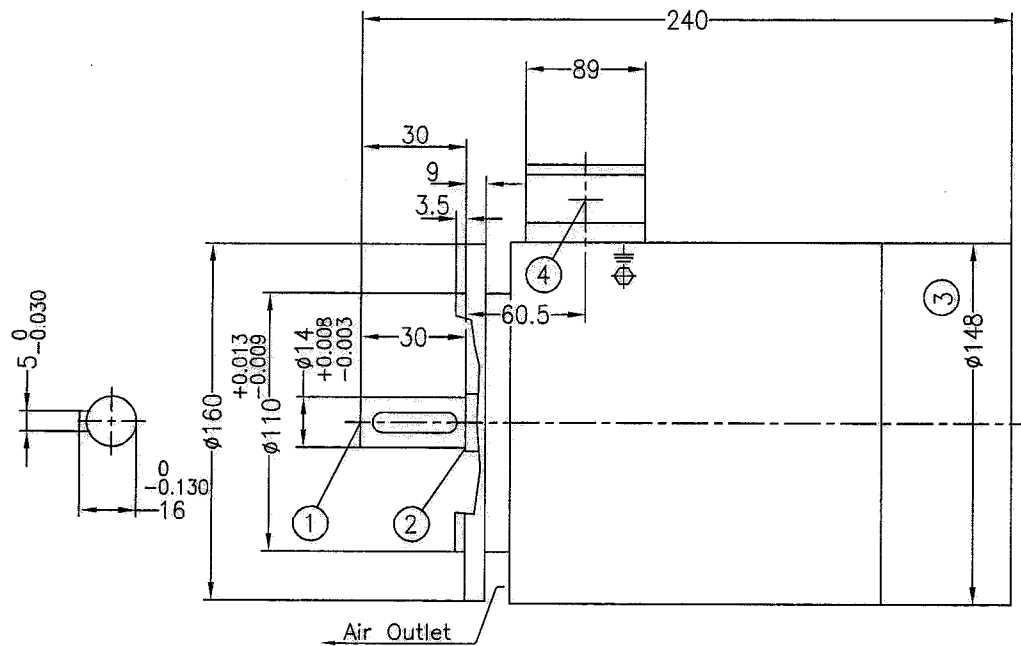
Motor Type : 1LA2 070-2NC71 Voltage : 415VY Rated Speed : 2807 rev/min
 Output : 0.37 kW Frequency : 50Hz Rated Torque : 0.13 kgf.m / 1.3 Nm
 Rated Current: 0.79A

% Load	FL	¾FL	½FL
Efficiency	75.5%	75.5%	75.5%
Power Factor	0.86	0.81	0.69

Locked Rtr Curr	6 x Rated
LRWT HOT	5 s
LRWT COLD	11 s

DATA SUBJECT TO TOLERANCE AS PER IS : 12615.





- ① Shaft extension $\phi 14$ x 30 with protected centre hole M5x12
- ② Relief groove E1x0.2 as per IS:3428
- ③ Measured over bolt heads
- ④ 1 No. B.S.Conduit Entry 19 (0.75") - IS:1653

Ⓣ Terminal Box Type : 1XB0 096
suitable for max. cable conductor cross-section(mm²): 6.0

F130B (Frame 71)			IM-B5/V1	
Flange Designation			Applicable for Construction	
Drawn	Date	Name	Dimensional Diagram	Scale
Checked				NTS
Std. CHD.				
Dim. without tolerance as per very coarse IS:2102			DRG No. 4D-2707-04-0242294-101	
SIEMENS LTD MOTORS			REF DRG NO.	