

<b>SIEMENS</b>		<b>Data Sheet : Induction Motor Champion Series Motor Type : 1LA2 090-4NA71</b>					
Number of Phases		3					
Rated Output kW		1.1					
Rated Voltage V		415					
Rated Current A		2.2		Reference Standard	IS:12615		
Rated Speed rev/min		1430		Enclosure IS:4691	IP55		
Rated Frequency Hz		50		Cooling IS:6362	IC411		
Rated Torque		0.75 kgf.m / 7.3 Nm		Duty		S1	
Efficiency :	100% load %	84.1		Terminal Box	Type	1XB0 096	
	75% load %	84.1			Terminal Size	M4	
	50% load %	81.0			No. of Terminals	6	
Power Factor :	100% load %	0.82		Data	Max. Cable Section	mm <sup>2</sup> 1R 3½C 6mm <sup>2</sup>	
	75% load %	0.76			Bearing Data	Drive End	6205ZZ
	50% load %	0.64				Non-Drive End	6205ZZ
Insulation Class		F		Lubrication	Pre-Lubricated		
Temperature rise (Res.method) K		70			Life L10 hrs. #	50,000	
Locked rotor withstand time	Hot (s)	6		Lifting eyebolt IS:4190		M8	
	Cold (s)	14		Motor weight (approx.) kg		22	
Stator connection		STAR		Rotor	GD <sup>2</sup> (4x MI) kgf.m <sup>2</sup>	0.0103	
Rotor Class		KL16			Weight kg	8.8	
Ratio of starting current to the rated current				Construction IS:2253		IMB5	
Ratio of starting torque to the rated torque	100% voltage	6.0		Frame designation		90S	
	80% voltage	4.5					
					Ambient Temperature °C	50	
Ratio of Breakdown torque to the rated torque	100% voltage	3.5		Voltage Variation %		± 10	
	80% voltage	2.1		Frequency variation %		± 5	
				Combined Voltage & Frequency variation %		10	
				# For directly coupled drives			
				Data subject to tolerance as per IS:12615.			
<b>Remarks :</b> Unique Identification Code: UIC-7296762 <--- This code must match with the one on Characteristic Curves Sheet.							
<b>KALWA, INDIA</b> <b>Department : I DT LD P LV-Motors</b>		Reference Document MTR 2.6-182		Printed & Checked : Date : 18.12.2012		Release Date <b>Aug '2011</b>	

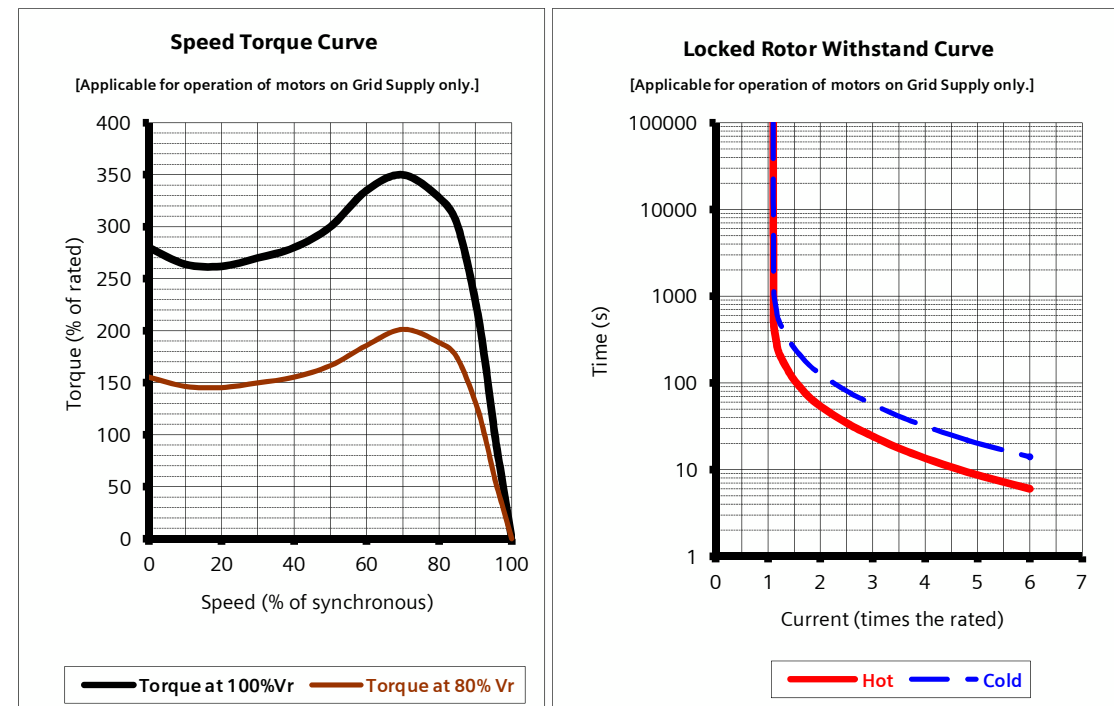
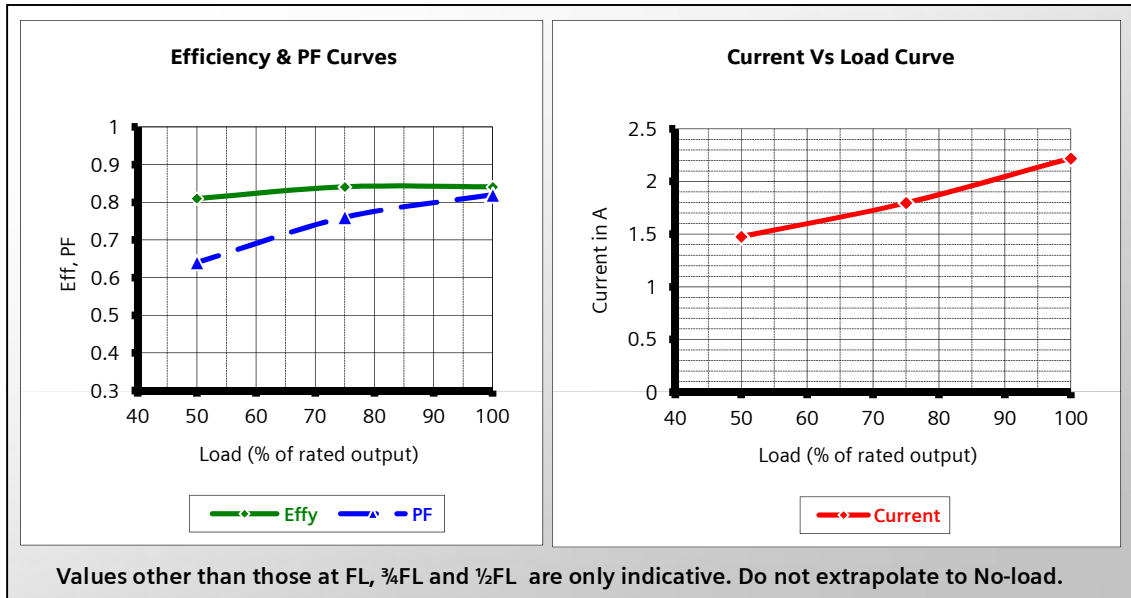
Unique Identification Code: UIC-7296762 <-- This code must match with the one on the Data Sheet.

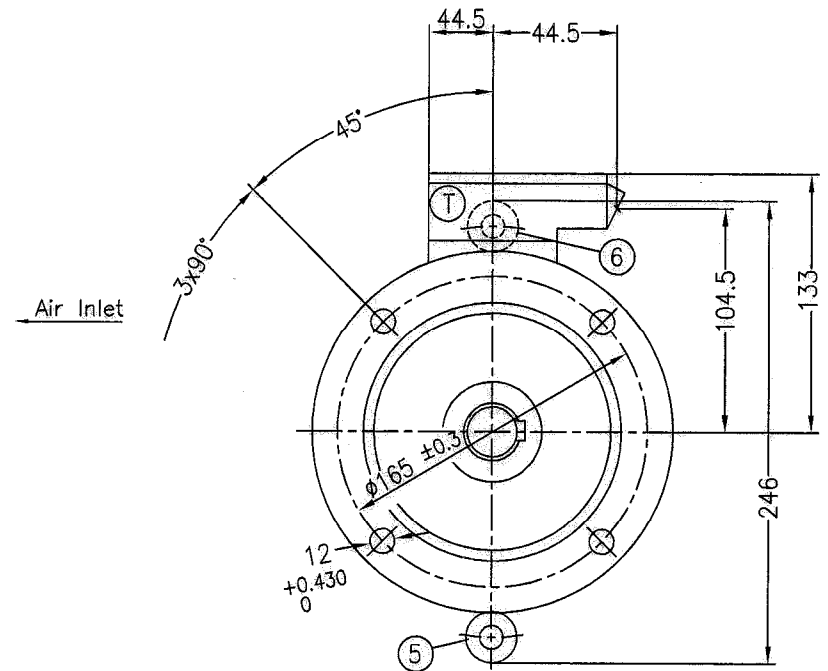
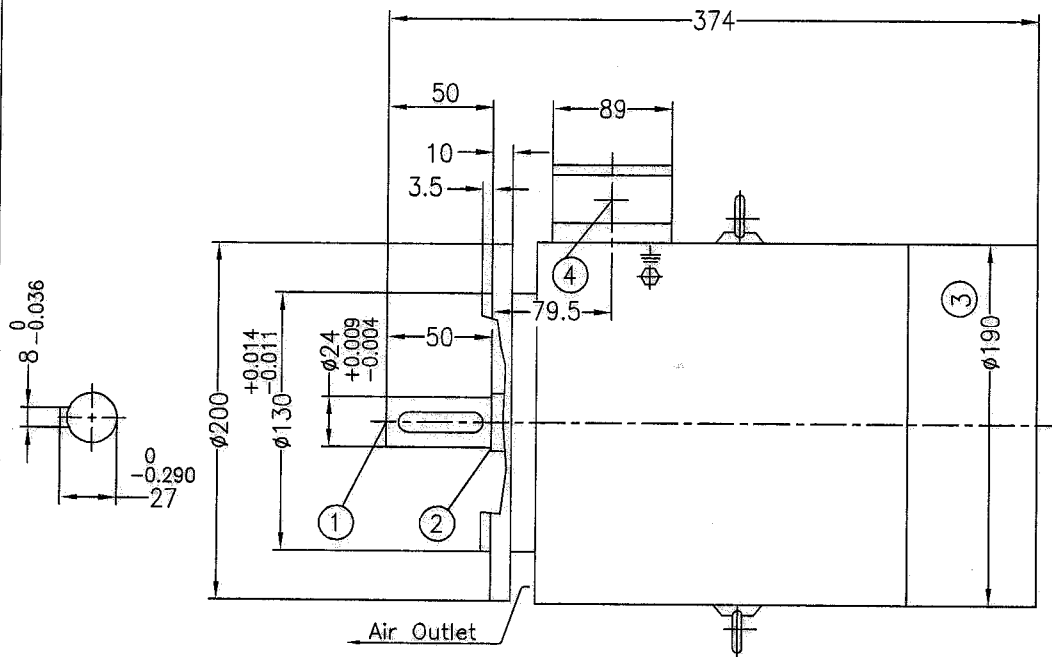
Motor Type : 1LA2 090-4NA71 Voltage : 415VY Rated Speed : 1430 rev/min  
 Output : 1.1 kW Frequency : 50Hz Rated Torque : 0.75 kgf.m / 7.3 Nm  
 Rated Current: 2.2A

% Load	FL	¾FL	½FL
Efficiency	84.1%	84.1%	81.0%
Power Factor	0.82	0.76	0.64

Locked Rtr Curr	6 x Rated
LRWT HOT	6 s
LRWT COLD	14 s

**DATA SUBJECT TO TOLERANCE AS PER IS : 12615.**





- ① Shaft extension  $\phi 24_{j6}$  x 50 with protected centre hole M8x20
- ② Relief groove E1x0.2 as per IS:3428
- ③ Measured over bolt heads
- ④ 1 No. B.S.Conduit Entry 19 (0.75") -IS:1653
- ⑤ Eye Bolt position for V1 construction.
- ⑥ Eye Bolt position for B5 construction.

Ⓣ Terminal Box Type : 1XB0 096  
 suitable for max. cable conductor cross-section(mm<sup>2</sup>): 6.0

F165B (Frame 90S/L)			IM-B5/V1	
Flange Designation			Applicable for Construction	
Drawn	Date	Name	Dimensional Diagram Type:1SE0/1LA2 09...N DRG No. 4D-2709-04-0242302-101 REF DRG NO.:	Scale NTS
Checked				
Std.CHD.				
Dim. without tolerance as per very coarse IS:2102			SIEMENS LTD MOTORS	