

SIEMENS		Data Sheet : Induction Motor Champion Series Motor Type : 1LA2 106-6NB70						
Number of Phases		3						
Rated Output kW		1.5						
Rated Voltage V		415						
Rated Current A		3.3		Reference Standard	IS:12615			
Rated Speed rev/min		952		Enclosure IS:4691	IP55			
Rated Frequency Hz		50		Cooling IS:6362	IC411			
Rated Torque		1.5 kgf.m / 15 Nm		Duty		S1		
Efficiency :	100% load %	82.5		Terminal Box Data	Type	1XB0 132		
	75% load %	82.5			Terminal Size	M5		
	50% load %	81.0			No. of Terminals	6		
Power Factor :	100% load %	0.77		Bearing Data	Max. Cable Section	mm ² 2R 3½C 16mm ²		
	75% load %	0.71			Drive End	6206ZZ		
	50% load %	0.59			Non-Drive End	6206ZZ		
Insulation Class		F		Lubrication Pre-Lubricated				
Temperature rise (Res.method) K		70		Life L10 hrs. #			50,000	
Locked rotor withstand time	Hot (s)	7		Lifting eyebolt IS:4190			M8	
	Cold (s)	16		Motor weight (approx.)			kg 33	
Stator connection		STAR		Rotor	GD ² (4x MI)	kgf.m ² 0.0336		
Rotor Class		KL13			Weight	kg	13.2	
Ratio of starting current to the rated current				Construction IS:2253			IMB3	
Ratio of starting torque to the rated torque		100% voltage	5.5		Frame designation			100L
		80% voltage	4.0					
Ratio of Breakdown torque to the rated torque				Ambient Temperature °C			50	
				100% voltage	2.3		Voltage Variation % ± 10	
Ratio of Breakdown torque to the rated torque		80% voltage	1.2		Frequency variation % ± 5			
		Ratio of Breakdown torque to the rated torque			Combined Voltage & Frequency variation % 10			
100% voltage		2.6		# For directly coupled drives				
80% voltage		1.5		Data subject to tolerance as per IS:12615.				
Remarks : Unique Identification Code: UIC-9443597 <--- This code must match with the one on Characteristic Curves Sheet.								
KALWA, INDIA		Reference Document		Printed & Checked :		Release Date		
Department : I DT LD P LV-Motors		MTR 2.6-182		Date : 19.12.2012		Aug '2011		

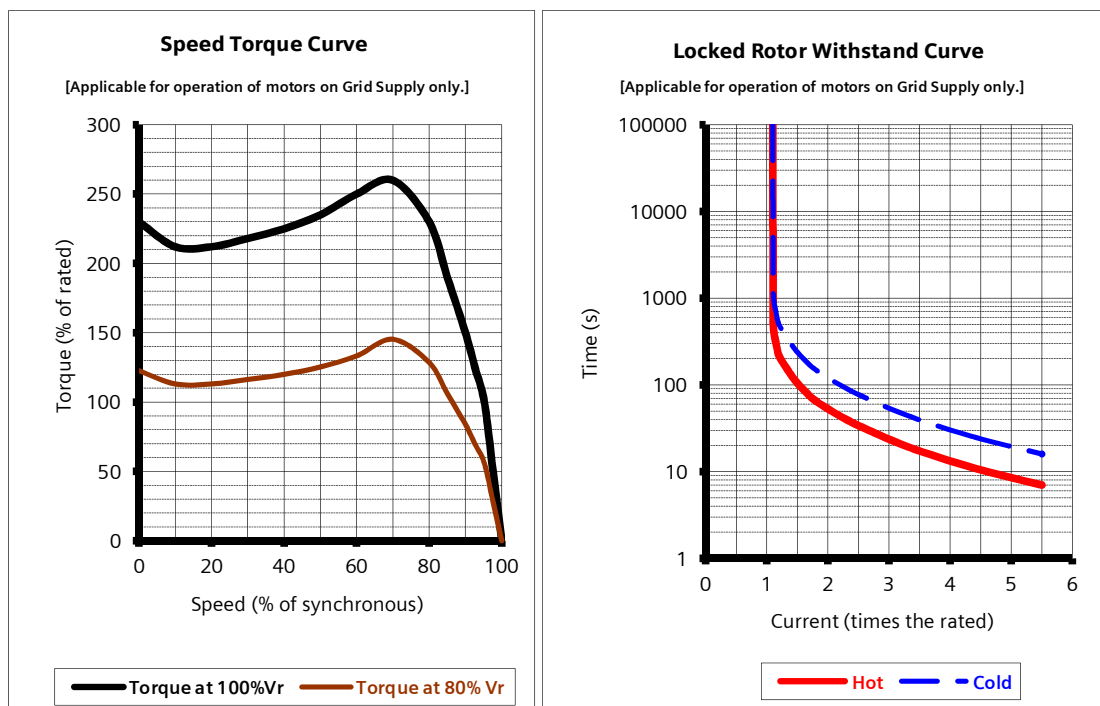
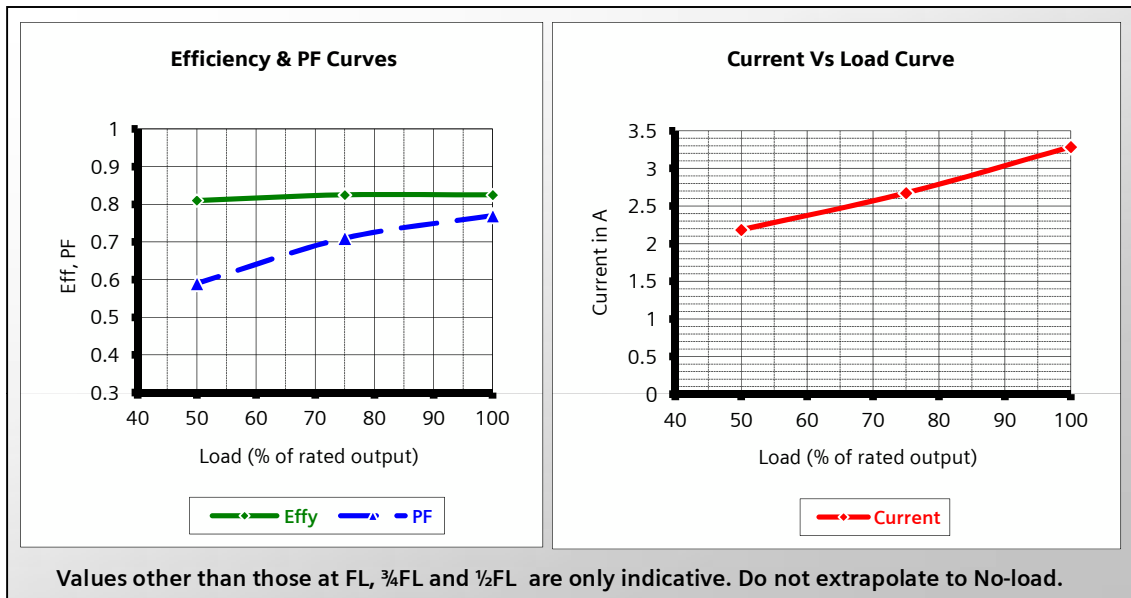
Unique Identification Code: UIC-9443597 <-- This code must match with the one on the Data Sheet.

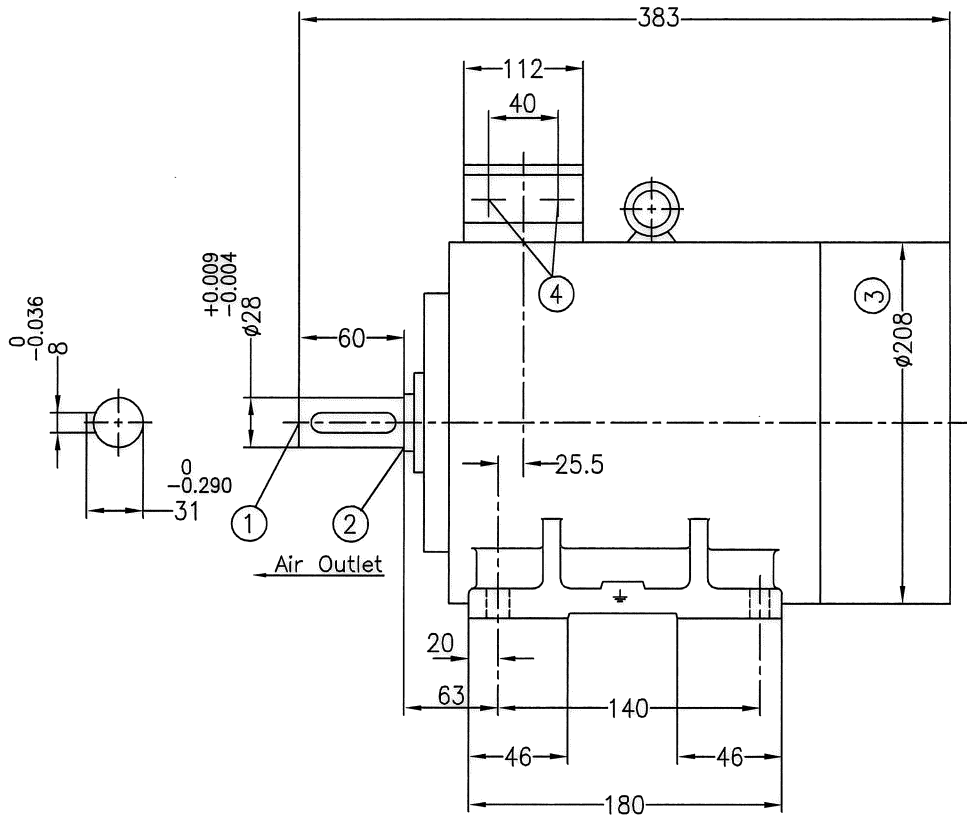
Motor Type : 1LA2 106-6NB70 Voltage : 415VY Rated Speed : 952 rev/min
 Output : 1.5 kW Frequency : 50Hz Rated Torque : 1.5 kgf.m / 15 Nm
 Rated Current: 3.3A

% Load	FL	¾FL	½FL
Efficiency	82.5%	82.5%	81.0%
Power Factor	0.77	0.71	0.59

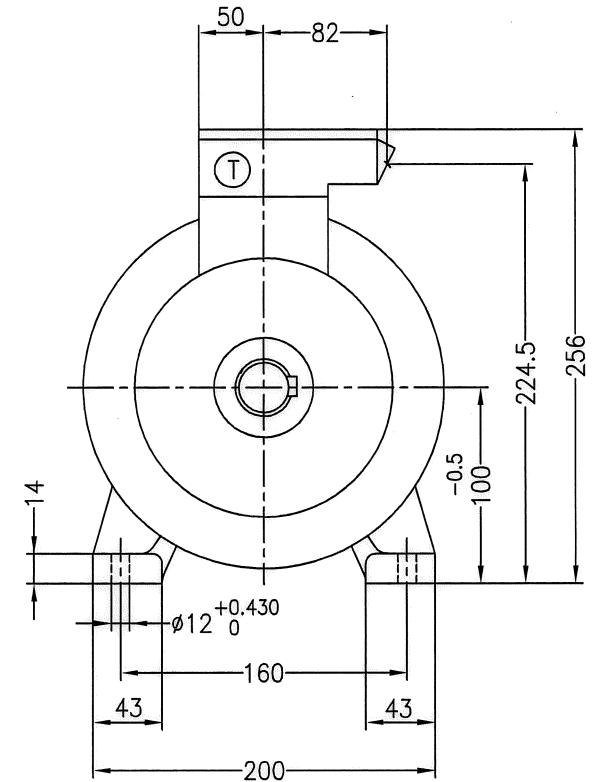
Locked Rtr Curr	5.5 x Rated
LRWT HOT	7 s
LRWT COLD	16 s

DATA SUBJECT TO TOLERANCE AS PER IS : 12615.





Air Inlet



- ① Shaft extension $\phi 28_{j6} \times 60$ with protected centre hole M10x24
- ② Relief groove E1x0.2 as per IS:3428
- ③ Measured over bolt heads
- ④ 2 Nos. B.S.Conduit Entry 25.4 (1.0") -IS:1653

Ⓣ Terminal Box Type : 1XB0 132
suitable for max. cable conductor cross-section(mm²): 16.

100L			IM-B3	
Frame Designation			Applicable for Construction	
Drawn	Date	Name		Dimensional Diagram Type:1LA2 010...N
Checked				
Std.CHD.				
Dim. without tolerance as per very coarse IS:2102			SIEMENS LTD MOTORS	DRG No. 4D-2710-00-0242305-102 REF DRG NO.:
				Scale NTS