

SIEMENS		Data Sheet : Induction Motor Champion Series Motor Type : 1LA2 090-2NA70				
Number of Phases		3				
Rated Output kW		1.5				
Rated Voltage V		415				
Rated Current A		2.8		Reference Standard	IS:12615	
Rated Speed rev/min		2849		Enclosure IS:4691	IP55	
Rated Frequency Hz		50		Cooling IS:6362	IC411	
Rated Torque		0.51 kgf.m / 5 Nm		Duty		S1
Efficiency :	100% load %	84.2		Terminal Box Data	Type	1XB0 096
	75% load %	84.2			Terminal Size	M4
	50% load %	84.2			No. of Terminals	6
Power Factor :	100% load %	0.88		Bearing Data	Max. Cable Section	mm ² 1R 3½C 6mm ²
	75% load %	0.84			Drive End	6205ZZ
	50% load %	0.75			Non-Drive End	6205ZZ
Insulation Class		F		Lubrication	Pre-Lubricated	
Temperature rise (Res.method) K		70			Life L10 hrs. #	50,000
Locked rotor withstand time	Hot (s)	7		Lifting eyebolt IS:4190		M8
	Cold (s)	16		Motor weight (approx.)		kg 20
Stator connection		STAR		Rotor	GD ² (4x MI)	kgf.m ² 0.0093
Rotor Class		KL16			Weight	kg
Ratio of starting current to the rated current				Construction IS:2253		IMB3
Ratio of starting torque to the rated torque	100% voltage	6.5		Frame designation		90S
	80% voltage	4.8				
	100% voltage	2.8		Ambient Temperature °C		50
Ratio of Breakdown torque to the rated torque	80% voltage	1.6		Voltage Variation % ± 10		
	100% voltage	3.1		Frequency variation % ± 5		
				Combined Voltage & Frequency variation % 10		
				# For directly coupled drives		
				Data subject to tolerance as per IS:12615.		
Remarks : Unique Identification Code: UIC-5732085 <--- This code must match with the one on Characteristic Curves Sheet.						
KALWA, INDIA Department : I DT LD P LV-Motors		Reference Document MTR 2.6-182		Printed & Checked : Date : 19.12.2012		Release Date Aug '2011

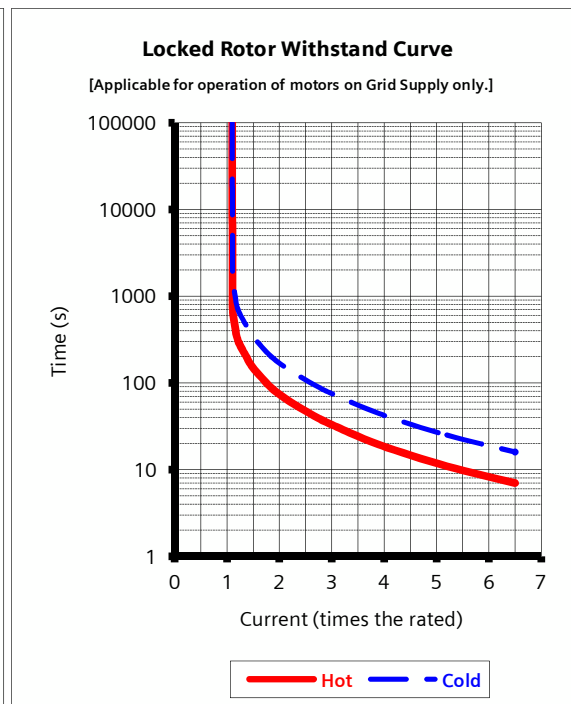
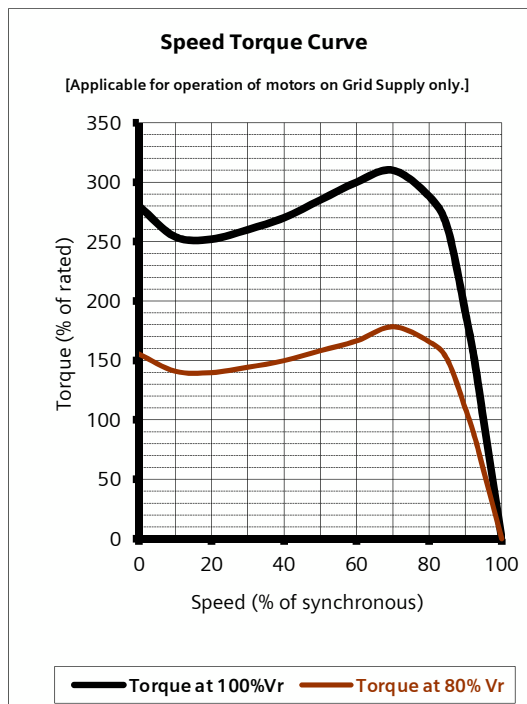
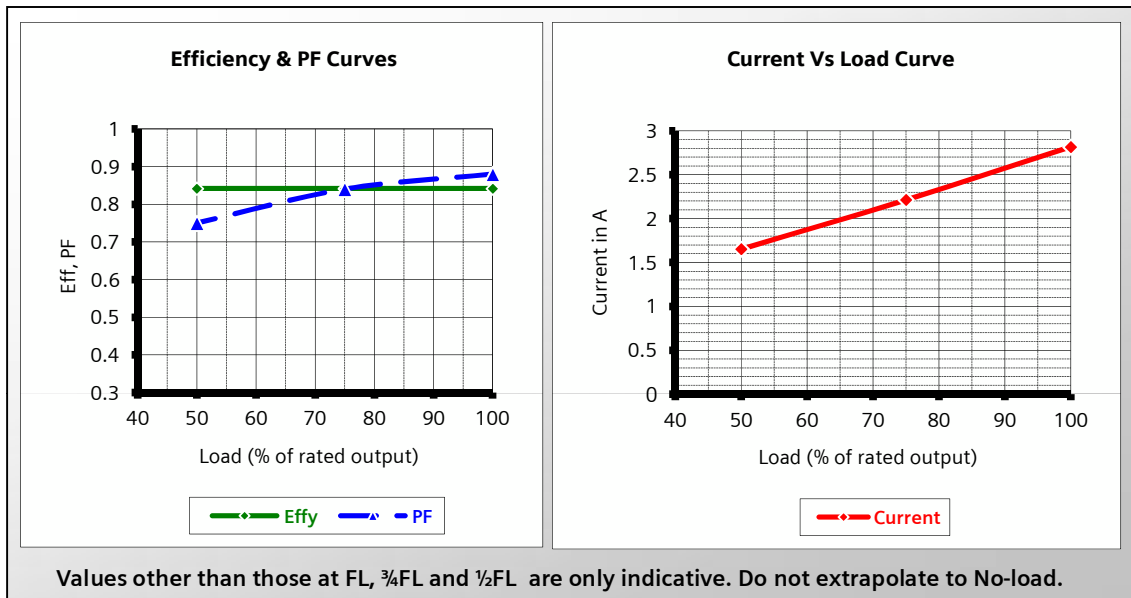
Unique Identification Code: UIC-5732085 <-- This code must match with the one on the Data Sheet.

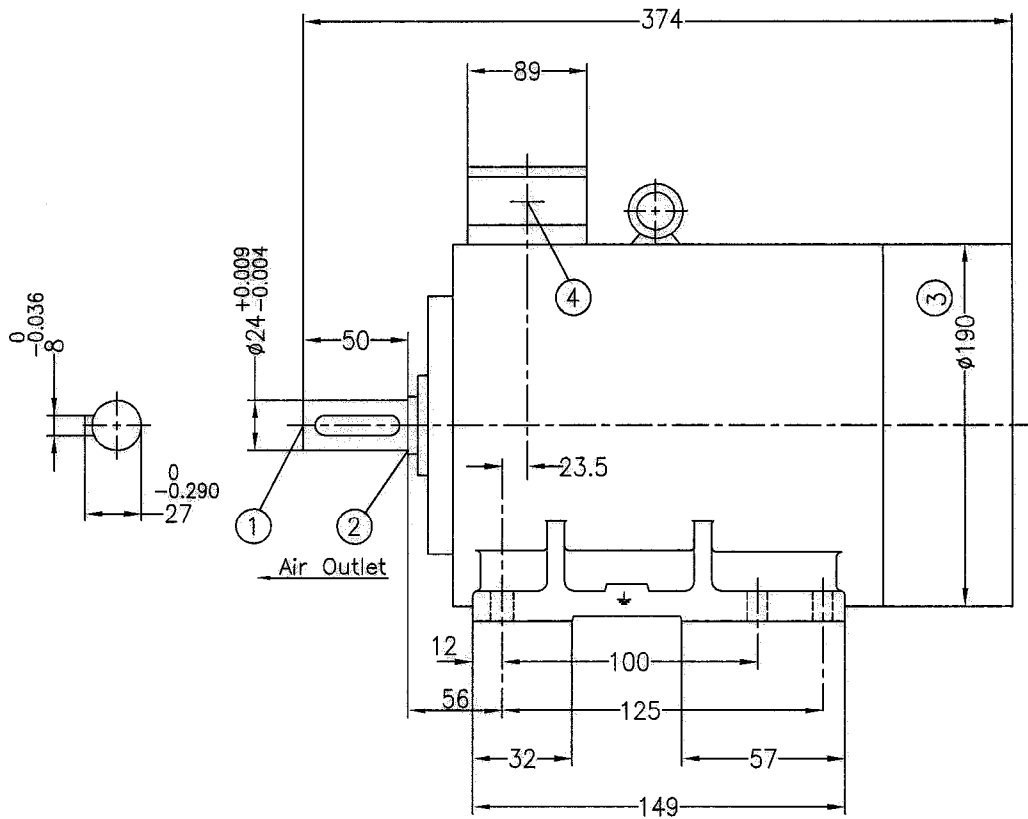
Motor Type : 1LA2 090-2NA70 Voltage : 415VY Rated Speed : 2849 rev/min
 Output : 1.5 kW Frequency : 50Hz Rated Torque : 0.51 kgf.m / 5 Nm
 Rated Current: 2.8A

% Load	FL	¾FL	½FL
Efficiency	84.2%	84.2%	84.2%
Power Factor	0.88	0.84	0.75

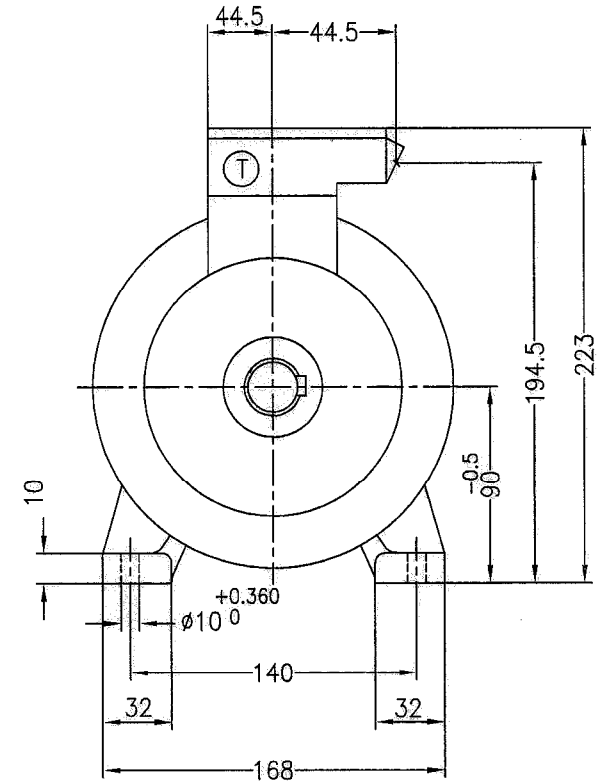
Locked Rtr Curr	6.5 x Rated
LRWT HOT	7 s
LRWT COLD	16 s

DATA SUBJECT TO TOLERANCE AS PER IS : 12615.





Air Inlet



- ① Shaft extension $\phi 24_{j6} \times 50$ with protected centre hole M8x20
- ② Relief groove E1x0.2 as per IS:3428
- ③ Measured over bolt heads
- ④ 1 No. B.S.Conduit Entry 19 (0.75") -IS:1653

Ⓣ Terminal Box Type : 1XB0 096
 suitable for max. cable conductor cross-section(mm²): 6.0

90S/L			IM-B3	
Frame Designation			Applicable for Construction	
Drawn	Date	Name		Dimensional Diagram Type: 1SE0/1LA2 09...N
Checked	3.9.11	...		
Std.CHD.				
Dim. without tolerance as per very coarse IS:2102			SIEMENS LTD MOTORS	DRG No. 4D-2709-00-0242301-101 REF DRG NO.:
Scale NTS				