

3-phase supply terminal Size S2 for 3-phase busbar connection from top

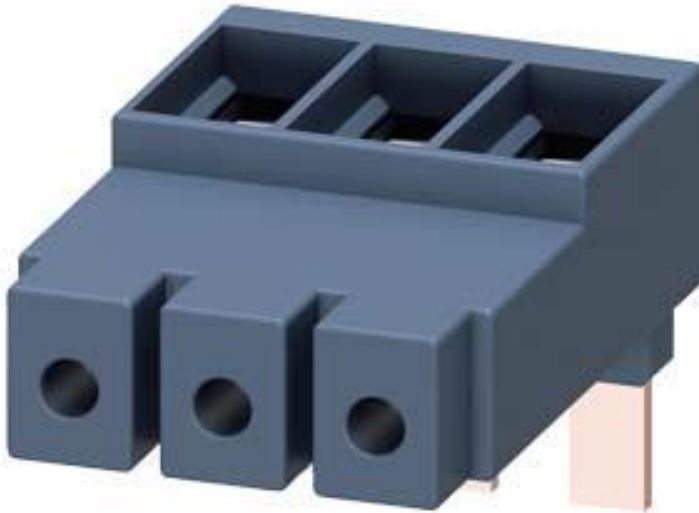






Figure similar

General technical data:		
Product brand name		SIRIUS
Product designation		Three-phase feeder terminal
Design of the product		from above, size S2
Size of the circuit-breaker		S2
Protection class IP on the front		IP20
Insulation voltage with degree of pollution 3 rated value	V	690
Ambient temperature		
• during storage	°C	-50 ... +80
• during operation	°C	-20 ... +60
Ampacity maximum	A	105
Installation/ mounting/ dimensions:		
Width	mm	54.5
Height	mm	50.8
Depth	mm	76.5
Connections/ Terminals:		

Type of electrical connection for main current circuit		screw-type terminals
<b>Type of connectable conductor cross-sections</b>		
<ul style="list-style-type: none"> <li>• for main contacts <ul style="list-style-type: none"> <li>— solid</li> <li>— stranded</li> <li>— finely stranded <ul style="list-style-type: none"> <li>— with core end processing</li> </ul> </li> </ul> </li> <li>• at AWG conductors for main contacts</li> </ul>		2x (2.5 ... 50 mm <sup>2</sup> ), 1x (2.5 ... 70 mm <sup>2</sup> ) 2x (2.5 ... 50 mm <sup>2</sup> ), 1x (2.5 ... 70 mm <sup>2</sup> )  2x (2.5 ... 35 mm <sup>2</sup> ), 1x (2.5 ... 50 mm <sup>2</sup> ). 2x (10 ... 1/0), 1x (10 ... 2/0)

### Certificates/ approvals:

<b>Certificate of suitability</b>	CE / UL / CSA / CCC	
<b>General Product Approval</b>	<b>Declaration of Conformity</b>	<b>Test Certificates</b>
 CSA  UL  EAC  CE EG-Konf.	<a href="#">Special Test Certificate</a>	<a href="#">Type Test Certificates/Test Report</a>

### Shipping Approval



### other

[Confirmation](#)



### Railway

[Vibration and Shock](#)

### Further information

**Information- and Downloadcenter (Catalogs, Brochures,...)**

<http://www.siemens.com/industrial-controls/catalogs>

**Industry Mall (Online ordering system)**

<http://www.siemens.com/industrymall>

**Cax online generator**

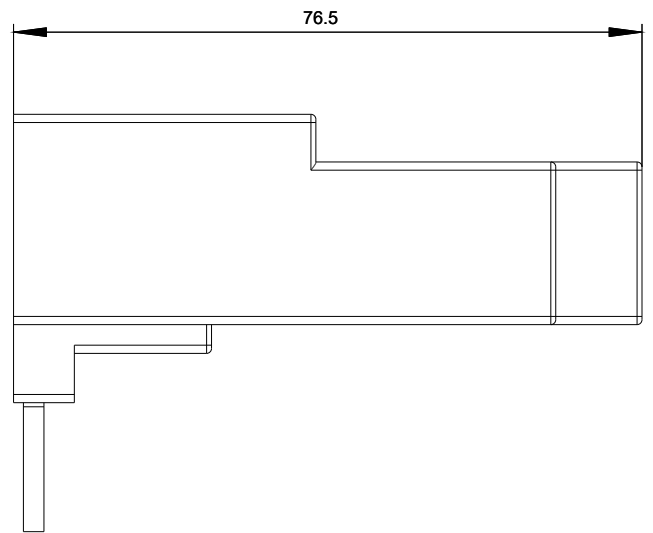
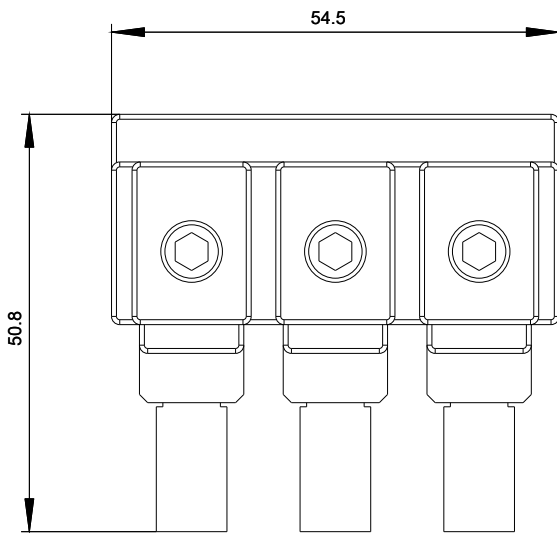
<http://support.automation.siemens.com/WW/CAXorder/default.aspx?lang=en&mlfb=3RV2935-5A>

**Service&Support (Manuals, Certificates, Characteristics, FAQs,...)**

<https://support.industry.siemens.com/cs/ww/en/ps/3RV2935-5A>

**Image database (product images, 2D dimension drawings, 3D models, device circuit diagrams, EPLAN macros, ...)**

[http://www.automation.siemens.com/bilddb/cax\\_de.aspx?mlfb=3RV2935-5A&lang=en](http://www.automation.siemens.com/bilddb/cax_de.aspx?mlfb=3RV2935-5A&lang=en)



last modified:

06/29/2018