

SIEMENS		Data Sheet : Induction Motor Champion Series Motor Type : 1LA2 113-6NB80				
Number of Phases		3				
Rated Output kW		2.2				
Rated Voltage V		415				
Rated Current A		4.8		Reference Standard IS:12615		
Rated Speed rev/min		961		Enclosure IS:4691 IP55		
Rated Frequency Hz		50		Cooling IS:6362 IC411		
Rated Torque		2.2 kgf.m / 22 Nm		Duty S1		
Efficiency :	100% load %	84.3		Terminal Box Data	Type	1XB0 132
	75% load %	84.3			Terminal Size	M5
	50% load %	83.3			No. of Terminals	6
Power Factor :	100% load %	0.75		Bearing Data	Max. Cable Section mm ²	2R 3½C 16mm ²
	75% load %	0.68			Drive End	6206ZZ
	50% load %	0.55			Non-Drive End	6206ZZ
Insulation Class		F		Lubrication	Pre-Lubricated	
Temperature rise (Res.method) K		70			Life L10 hrs. #	50,000
Locked rotor withstand time	Hot (s)	7		Lifting eyebolt IS:4190 M8		
	Cold (s)	17		Motor weight (approx.) kg 43		
Stator connection		DELTA		Rotor	GD ² (4x MI) kgf.m ²	0.0584
Rotor Class		KL13			Weight kg	17.2
Ratio of starting current to the rated current				Construction IS:2253 IMB3		
Ratio of starting torque to the rated torque	100% voltage	5.5		Frame designation 112M		
	80% voltage	4.0				
Ratio of Breakdown torque to the rated torque	100% voltage	2.6		Ambient Temperature °C 50		
	80% voltage	1.5		Voltage Variation % ± 10		
				Frequency variation % ± 5		
				Combined Voltage & Frequency variation % 10		
				# For directly coupled drives		
				Data subject to tolerance as per IS:12615.		
Remarks : Unique Identification Code: UIC-7242993 <--- This code must match with the one on Characteristic Curves Sheet.						
KALWA, INDIA Department : I DT LD P LV-Motors		Reference Document MTR 2.6-182		Printed & Checked : Date : 14.12.2012		Release Date Aug '2011

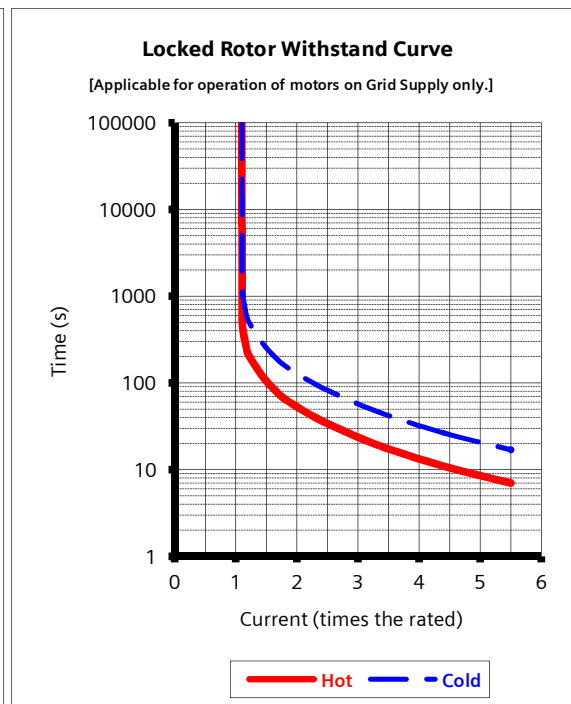
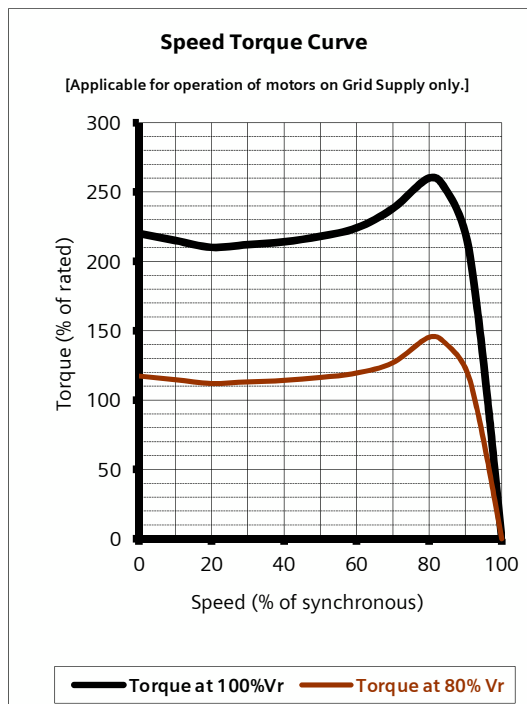
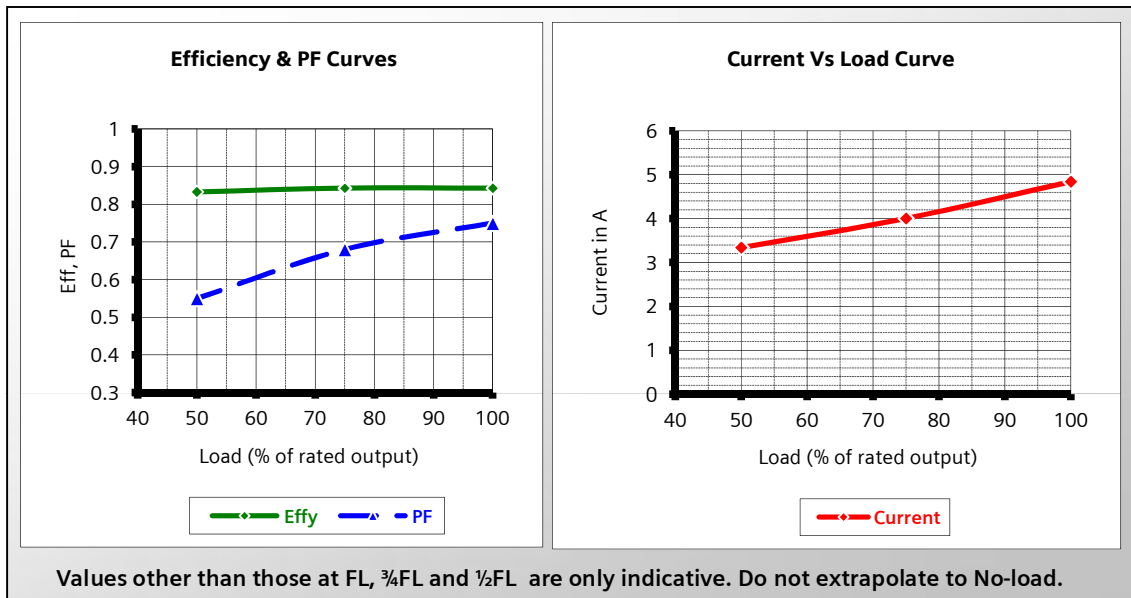
Unique Identification Code: UIC-7242993 <--- This code must match with the one on the Data Sheet.

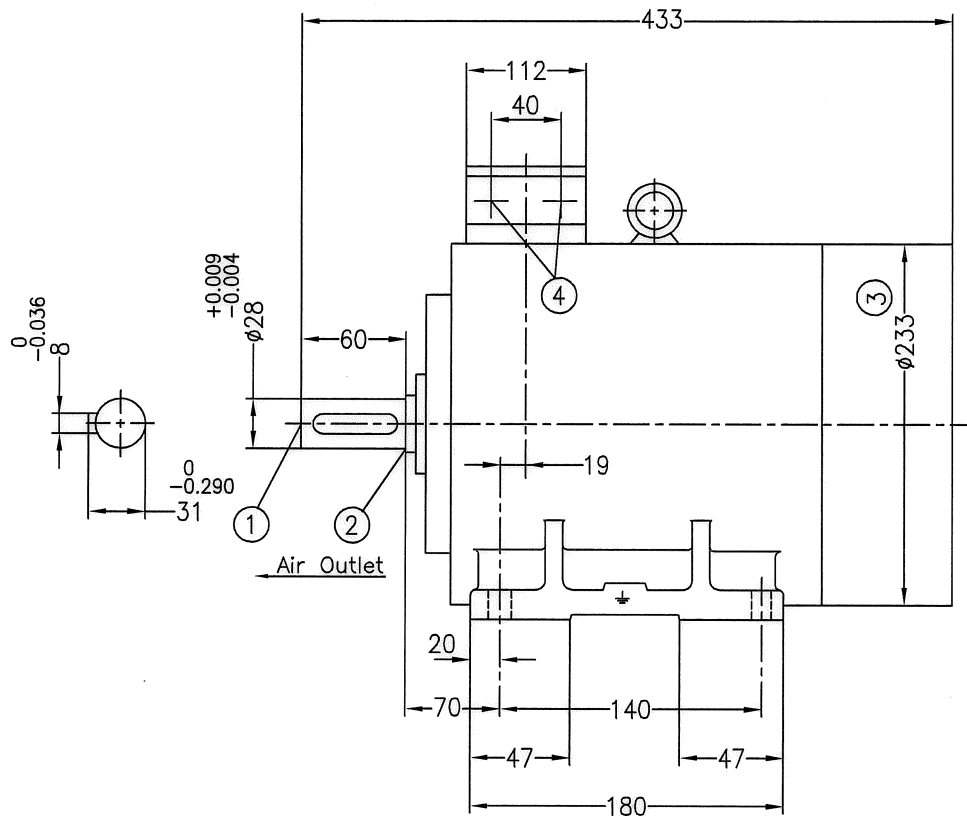
Motor Type : 1LA2 113-6NB80 Voltage : 415VΔ Rated Speed : 961 rev/min
 Output : 2.2 kW Frequency : 50Hz Rated Torque : 2.2 kgf.m / 22 Nm
 Rated Current: 4.8A

% Load	FL	¾FL	½FL
Efficiency	84.3%	84.3%	83.3%
Power Factor	0.75	0.68	0.55

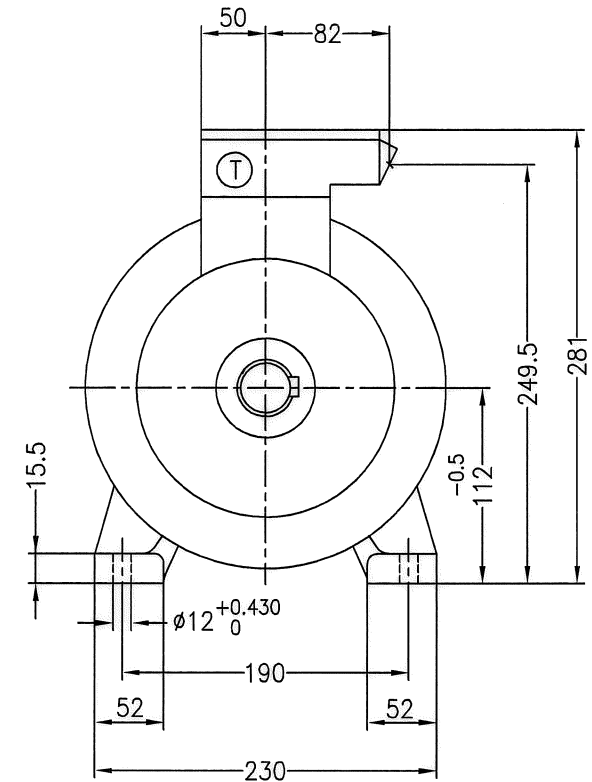
Locked Rtr Curr	5.5 x Rated
LRWT HOT	7 s
LRWT COLD	17 s

DATA SUBJECT TO TOLERANCE AS PER IS : 12615.





Air Inlet



- ① Shaft extension $\phi 28_{j6} \times 60$ with protected centre hole M10x24
- ② Relief groove E1x0.2 as per IS:3428
- ③ Measured over bolt heads
- ④ 2 Nos. B.S.Conduit Entry 25.4 (1.0") -IS:1653

Ⓣ Terminal Box Type : 1XB0 132
suitable for max. cable conductor cross-section(mm²): 16.

112M			IM-B3		
Frame Designation			Applicable for Construction		
Drawn	Date	Name		Dimensional Diagram Type: 1LA2 011...N	Scale NTS
Checked					
Std.CHD.					
Dim. without tolerance as per very coarse IS:2102			SIEMENS LTD MOTORS	DRG No. 4D-2711-00-0242309-102	
				REF DRG NO.:	