

Contact block for position switch 3SE51/52 2 NO/1 NC slow-action contact



Product brand name	SIRIUS
Product designation	contact
Product type designation	3SE5

### General technical data

<b>Product function</b>	
• positive opening	Yes
<b>Insulation voltage</b>	
• rated value	250 V
<b>Degree of pollution</b>	class 3
<b>Surge voltage resistance rated value</b>	4 kV
<b>Protection class IP</b>	IP00
<b>Shock resistance</b>	
• acc. to IEC 60068-2-27	30 g / 11 ms
<b>Vibration resistance</b>	
• acc. to IEC 60068-2-6	0.35 mm/5g
<b>Mechanical service life (switching cycles)</b>	
• typical	15 000 000
<b>Electrical endurance (switching cycles)</b>	
• at AC-15 at 230 V typical	100 000

Electrical endurance (switching cycles) with contactor 3RH11, 3RT1016, 3RT1017, 3RT1024, 3RT1025, 3RT1026 typical	10 000 000
Electrical operating cycles in one hour with contactor 3RH11, 3RT1016, 3RT1017, 3RT1024, 3RT1025, 3RT1026	6 000
Thermal current	10 A
Reference code acc. to DIN EN 81346-2	S
Reference code acc. to DIN EN 61346-2	S
Continuous current of the C characteristic MCB	1 A; for a short-circuit current smaller than 400 A
Continuous current of the quick DIAZED fuse link	10 A; for a short-circuit current smaller than 400 A
Continuous current of the DIAZED fuse link gG	6 A
Active principle	mechanical
Repeat accuracy	0.1 mm
Width of the sensor	25 mm
Operating frequency rated value	50 ... 60 Hz
Number of NC contacts for auxiliary contacts	1
Number of NO contacts for auxiliary contacts	2
<b>Operating current at AC-15</b>	
• at 24 V rated value	6 A
• at 125 V rated value	6 A
• at 240 V rated value	6 A
• at 400 V rated value	4 A
<b>Operating current at DC-13</b>	
• at 24 V rated value	3 A
• at 125 V rated value	0.55 A
• at 250 V rated value	0.27 A
• at 400 V rated value	0.12 A
Design of the interface for safety-related communication	without

<b>Enclosure</b>	
Coating of the enclosure	Other types

<b>Drive Head</b>	
Design of the switching function	positive opening
Circuit principle	slow-action contacts
Number of switching contacts safety-related	1

<b>Connections/ Terminals</b>	
Type of electrical connection	screw-type terminals
<b>Type of connectable conductor cross-sections</b>	
• solid	1x (0.5 ... 1.5 mm <sup>2</sup> ), 2x (0.5 ... 0.75 mm <sup>2</sup> )
• finely stranded with core end processing	1x (0.5 ... 1.5 mm <sup>2</sup> ), 2x (0.5 ... 0.75 mm <sup>2</sup> )
• at AWG conductors solid	1x (20 ... 16), 2x (20 ... 18)

- at AWG conductors stranded

1x (20 ... 16), 2x (20 ... 18)

### Communication/ Protocol

**Design of the interface** without

### Ambient conditions

**Ambient temperature**

- during operation -25 ... +85 °C
- during storage -40 ... +90 °C

**Explosion protection category for dust** none

### Installation/ mounting/ dimensions

**Mounting position** any

**Mounting type** snap-on mounting

### Certificates/ approvals

#### General Product Approval

#### Declaration of Conformity



CCC



CSA



UR

[KC](#)



EG-Konf.

#### Declaration of Conformity

[Miscellaneous](#)

#### Test Certificates

[Type Test Certificates/Test Report](#)

#### other

[Confirmation](#)

### Further information

#### Information- and Downloadcenter (Catalogs, Brochures,...)

<https://www.siemens.com/ic10>

#### Industry Mall (Online ordering system)

<https://mall.industry.siemens.com/mall/en/en/Catalog/product?mlfb=3SE5000-0PA00>

#### Cax online generator

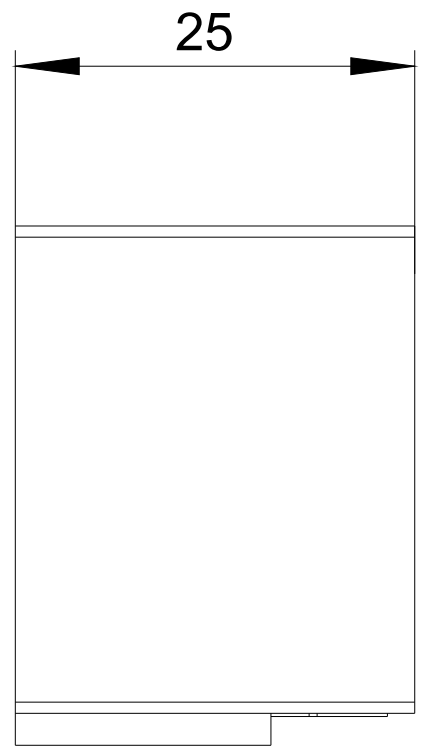
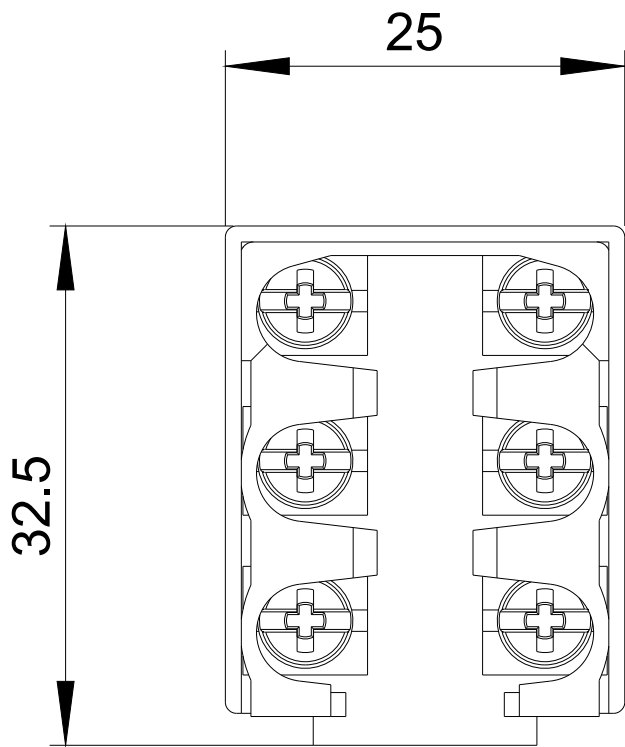
<http://support.automation.siemens.com/WW/CAXorder/default.aspx?lang=en&mlfb=3SE5000-0PA00>

#### Service&Support (Manuals, Certificates, Characteristics, FAQs,...)

<https://support.industry.siemens.com/cs/ww/en/ps/3SE5000-0PA00>

#### Image database (product images, 2D dimension drawings, 3D models, device circuit diagrams, EPLAN macros, ...)

[http://www.automation.siemens.com/bilddb/cax\\_de.aspx?mlfb=3SE5000-0PA00&lang=en](http://www.automation.siemens.com/bilddb/cax_de.aspx?mlfb=3SE5000-0PA00&lang=en)



last modified:

04/04/2020