

ACCESSORY FOR VL400, STORED ENERGY OPERATOR 220-250V AC/DC

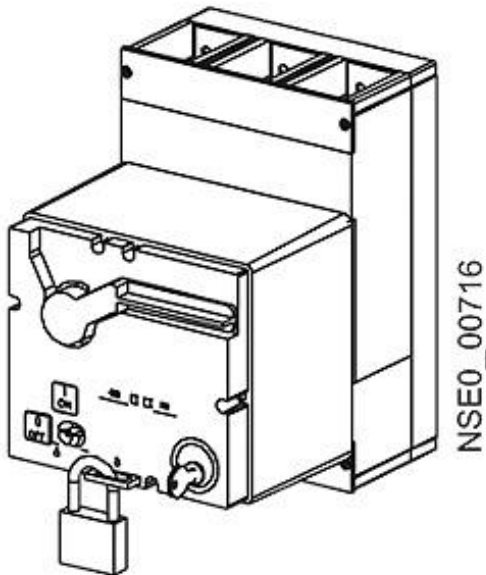


Figure similar

Model	
product brandname	SENTRON
Type of the driving mechanism	Motorized operating mechanism with spring energy store
General technical data	
Break time / typical	5 s
Operating frequency / maximum	120 1/h
Voltage	
Fuse protection type / for external auxiliary power supply / required	NEOZED fuse (gL/gG): 2 A / miniature circuit breaker, C char.: 2 A
Operating range factor control supply voltage rated value	
<ul style="list-style-type: none"> • at AC / at 60 Hz / initial value • at AC / at 60 Hz / Full-scale value • at DC / initial value • at DC / Full-scale value 	<p>0.85</p> <p>1.1</p> <p>0.85</p> <p>1.1</p>
Protection class	

Protection class IP	IP30
Electricity	
Make time / typical	0.1 s
Control current	
Operating apparent output	200 V·A
Control supply voltage	
<ul style="list-style-type: none"> • at DC / rated value / minimum • at DC / rated value / maximum • at AC / at 50 Hz / rated value / minimum • at AC / at 50 Hz / rated value / maximum • at AC / at 60 Hz / rated value / minimum • at AC / at 60 Hz / rated value / maximum 	<ul style="list-style-type: none"> 250 V 220 V 220 V 250 V 220 V 250 V
Operating range factor control supply voltage rated value / at AC / at 50 Hz	
<ul style="list-style-type: none"> • initial value • Full-scale value 	<ul style="list-style-type: none"> 0.85 1.1
Accessories	
accessories	Accessories for VL400
Connections	
Connectable conductor cross-section / stranded	
<ul style="list-style-type: none"> • minimum • maximum 	<ul style="list-style-type: none"> 0.75 mm² 1.5 mm²
Wire stripping length	10 mm
Connectable conductor cross-section	
<ul style="list-style-type: none"> • solid <ul style="list-style-type: none"> — minimum — maximum • finely stranded / with core end processing <ul style="list-style-type: none"> — minimum — maximum 	<ul style="list-style-type: none"> 0.75 mm² 1.5 mm² 0.75 mm² 1.5 mm²
Tightening torque	
<ul style="list-style-type: none"> • maximum 	1 N·m
Mechanical Design	
Height	160 mm
Width	140 mm
Depth	160 mm
Net weight	4 593 g
Environmental conditions	
Ambient temperature	
<ul style="list-style-type: none"> • during operation / minimum 	-25 °C

- during operation / maximum
- during storage / minimum
- during storage / maximum





70 °C
-40 °C
80 °C




Certificates

Equipment marking

- acc. to DIN EN 61346-2
- acc. to DIN EN 81346-2

M
M

General Product Approval	EMC	Declaration of Conformity	Test Certificates	Shipping Approval
 CCC	 C-Tick	 EG-Konf.	spezielle Prüfbescheinigung <u>n</u>	 BUREAU VERITAS

Shipping Approval	other
 PRS	 RINA
 RMRS	sonstig
	Umweltbestätigung
	Bestätigungen

Further information

Information- and Downloadcenter (Catalogs, Brochures,...)

<http://www.siemens.com/lowvoltage/catalogs>

Industry Mall (Online ordering system)

<https://mall.industry.siemens.com/mall/en/en/Catalog/product?mlfb=3VL9400-3MQ00>

Service&Support (Manuals, Certificates, Characteristics, FAQs,...)

<http://support.automation.siemens.com/WW/view/en/3VL9400-3MQ00/all>

Image database (product images, 2D dimension drawings, 3D models, device circuit diagrams, ...)

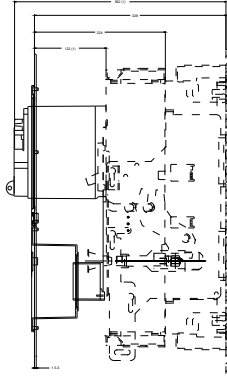
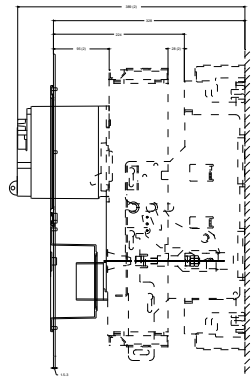
http://www.automation.siemens.com/bilddb/cax_en.aspx?mlfb=3VL9400-3MQ00

CAX-Online-Generator

<http://www.siemens.com/cax>

Tender specifications

<http://www.siemens.com/specifications>



(1) Betriebsstellung
(2) Trennstellung

