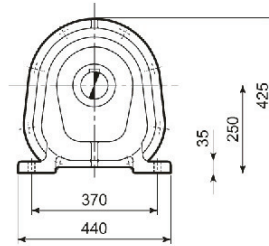
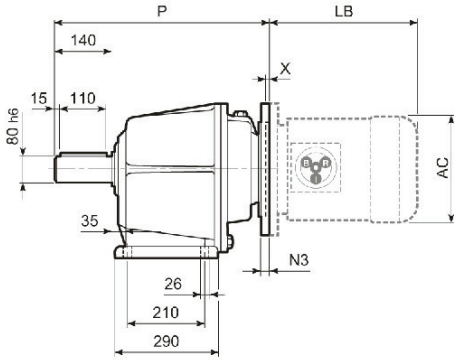


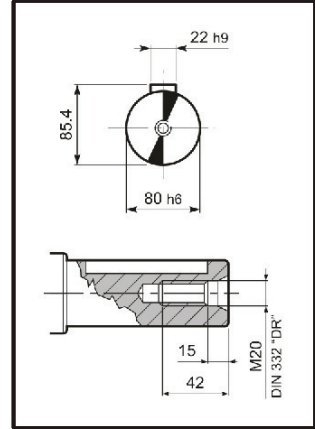
AS 80...P(IEC)

DIMENSIONS

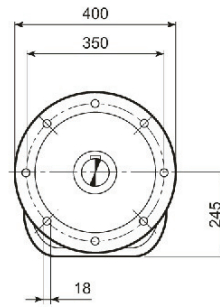
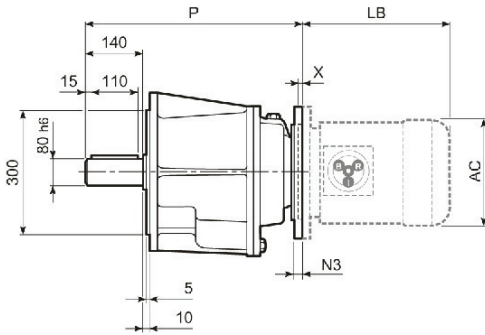
P
DP



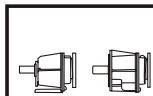
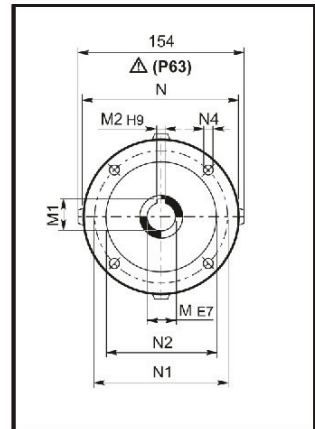
OUTPUT



F
DF



INPUT



AS 80

BN... BN...FD
BN...FA

	M	M1	M2	N	N1	N2	N3	N4	X	P			Kg	BN...	BN...FD BN...FA
										...P	...F	...R			
AS 80_160	42	45.3	12	350	300	250	23	18	6	600	600	-	152	BN 160MR	452 258 562 258
														BN 160M/L	486 310 626 310
AS 80_180	48	51.8	14	350	300	250	23	18	6	600	600	-	152	BN 180M	530 310 670 310
														BN 180L	598 348 756 348
AS 80_200	55	59.3	16	400	350	300	-	M16x25	6	600	600	-	152	BN 200L	612 348 768 348
AS 80 D_100	28	31.3	8	250	215	180	-	M12x16	5	585	585	-	147	BN 100	307 195 398 195
AS 80 D_112	28	31.3	8	250	215	180	-	M12x16	5	585	585	-	147	BN 112	325 219 424 219
AS 80 D_132	38	41.3	10	300	265	230	16	14	5	615	615	-	147	BN 132	413 258 523 258
AS 80 D_160	42	45.3	12	350	300	250	23	18	5	615	615	-	147	BN 160MR	452 258 562 258
														BN 160M/L	486 310 626 310