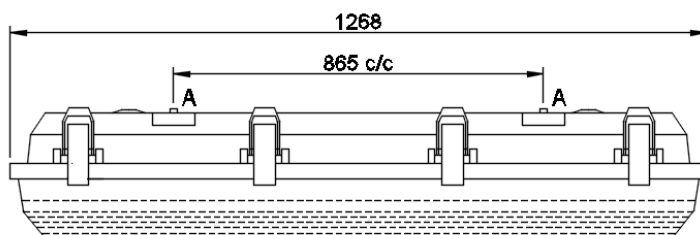




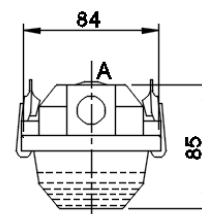
INDUSTRIAL LED LIGHTING LUMINAIRES

BJI 118 LED PC
BJI 218 LED PC

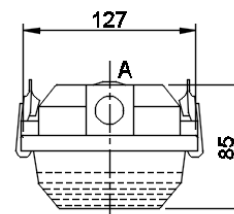
Single/Twin 18W LED Tube light luminaire



A = 2 Nos., STAINLESS STEEL CLAMPS



BJI 118 LED PC



BJI 218 LED PC

NOMINAL DIMENSIONS IN mm Tolerance +/-5

Application

Dairies, Chemical industries, Food processing plant, Laboratories, Paint factories, Paper mills, Textile mills, Car washing bay, Catering kitchens, Grain shops.

Specification

- This corrosion resistance LED Tube light luminaire comprises SS toggles and cover made of polycarbonate.
- Clear polycarbonate cover is fixed to the housing by toggles.
- CRCA gear tray cum reflector is finished in white powder coating.
- Completely prewired with accessories up to terminal block.
Suitable for single/twin 18W LED Tube (**BLRB 18W CWc-112432**) having one-side live connection.
- Finish: Housing Grey.
- Degree of protection: IP65

Electrical Data

Product Code	Cat. Ref.	Lamp Type & Wattage (W)	Nominal Voltage (V)
112687	BJI 118 LED PC	1 x 18W LED TUBE	240
112688	BJI 218 LED PC	2 x 18W LED TUBE	240

Data subject to variation due to change/improvement in the design, materials and processes.

<p>BAJAJ LUMINAIRES Making the difference</p>	DRAWN	KPM	08-09-2016	FOR –
	CHECKED	RN		REV - 0 DATE-22-09-2016
	APPROVED	DVRS		DRG.No
	DATA SHEET RELEASED ON DT-			BJI 118/218 LED PC - 001
BAJAJ ELECTRICALS LIMITED 15/17, SANT SAVTA MARG, REAY ROAD, MUMBAI-400 010.				* E-mail : luminaires@bajajelectricals.com