

<b>SIEMENS</b>		<b>Data Sheet : Induction Motor Champion Series Motor Type : 1LA2 073-4NB71</b>			
Number of Phases		3			
Rated Output kW		0.37			
Rated Voltage V		415			
Rated Current A		1		Reference Standard IS:12615	
Rated Speed rev/min		1422		Enclosure IS:4691 IP55	
Rated Frequency Hz		50		Cooling IS:6362 IC411	
Rated Torque		0.25 kgf.m / 2.5 Nm		Duty S1	
Efficiency :		100% load %		73.0	
		75% load %		73.0	
		50% load %		67.0	
Power Factor :		100% load %		0.68	
		75% load %		0.58	
		50% load %		0.45	
Insulation Class		F		Bearing Data	
Temperature rise (Res.method) K		70			
				Lubrication Pre-Lubricated	
				Life L10 hrs. # 50,000	
Locked rotor withstand time		Hot (s)		5	
		Cold (s)		11	
Lifting eyebolt IS:4190				-	
Motor weight (approx.) kg				10	
Stator connection		STAR		Rotor	
Rotor Class		KL13			
				GD <sup>2</sup> (4x MI) kgf.m <sup>2</sup> 0.0028	
				Weight kg 4	
Ratio of starting current to the rated current				Construction IS:2253 IMB5	
		100% voltage		5.5	
		80% voltage		4.1	
Ratio of starting torque to the rated torque				Frame designation 71	
		100% voltage		2.1	
		80% voltage		1.2	
Ratio of Breakdown torque to the rated torque				Ambient Temperature °C 50	
		100% voltage		2.8	
		80% voltage		1.7	
				Voltage Variation % ± 10	
				Frequency variation % ± 5	
				Combined Voltage & Frequency variation % 10	
				# For directly coupled drives	
				Data subject to tolerance as per IS:12615.	
<b>Remarks :</b> Unique Identification Code: UIC-6582142 <--- This code must match with the one on Characteristic Curves Sheet.					
No 'IE' marking on nameplate as rating is not covered in IS:12615.					
<b>KALWA, INDIA Department : I DT LD P LV-Motors</b>		Reference Document MTR 2.6-182		Printed & Checked : Date : 18.12.2012	
				Release Date <b>Aug '2011</b>	

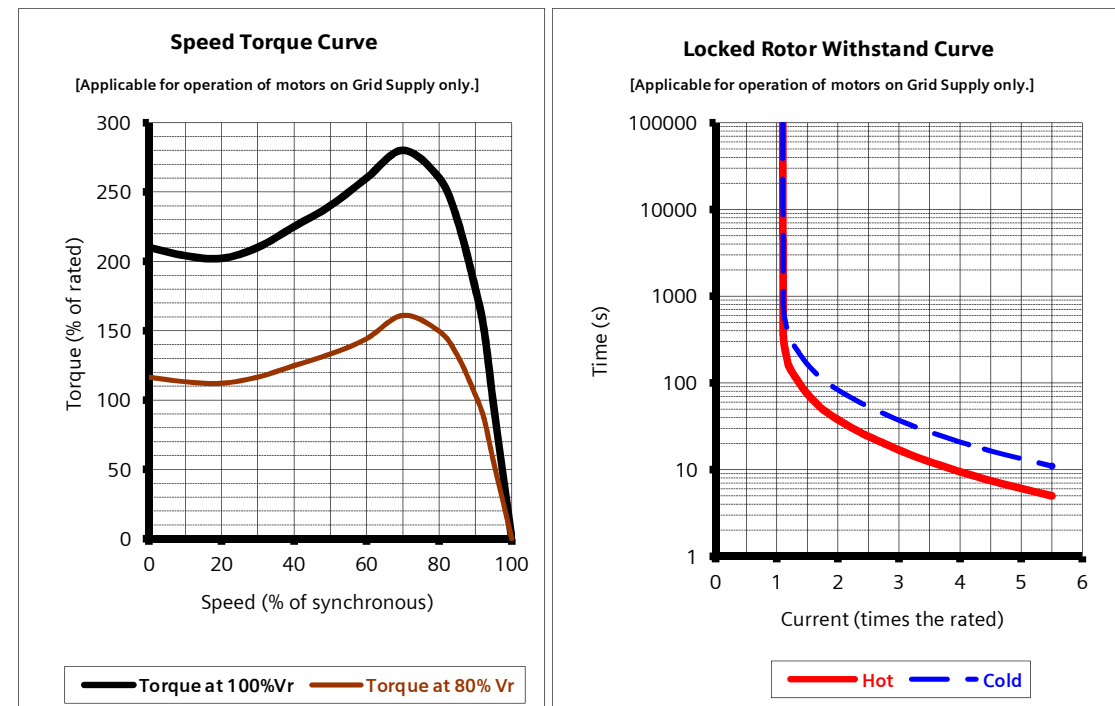
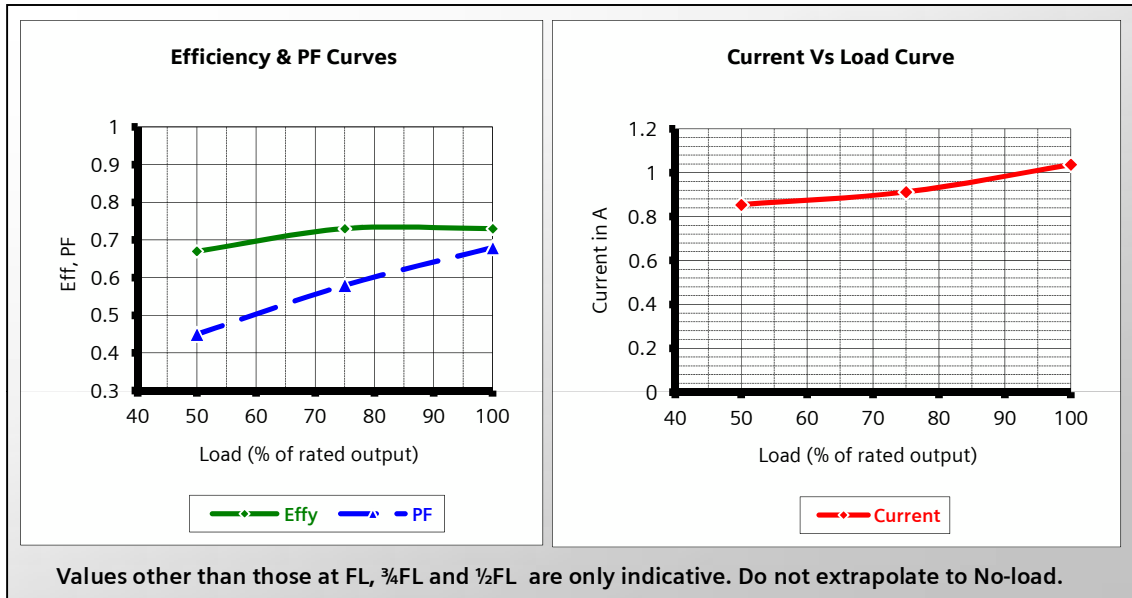
Unique Identification Code: UIC-6582142 <-- This code must match with the one on the Data Sheet.

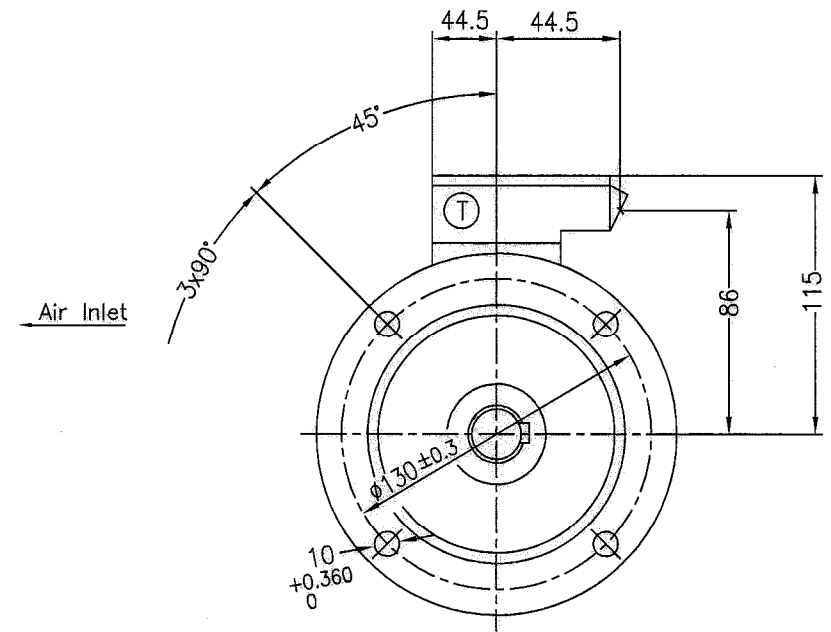
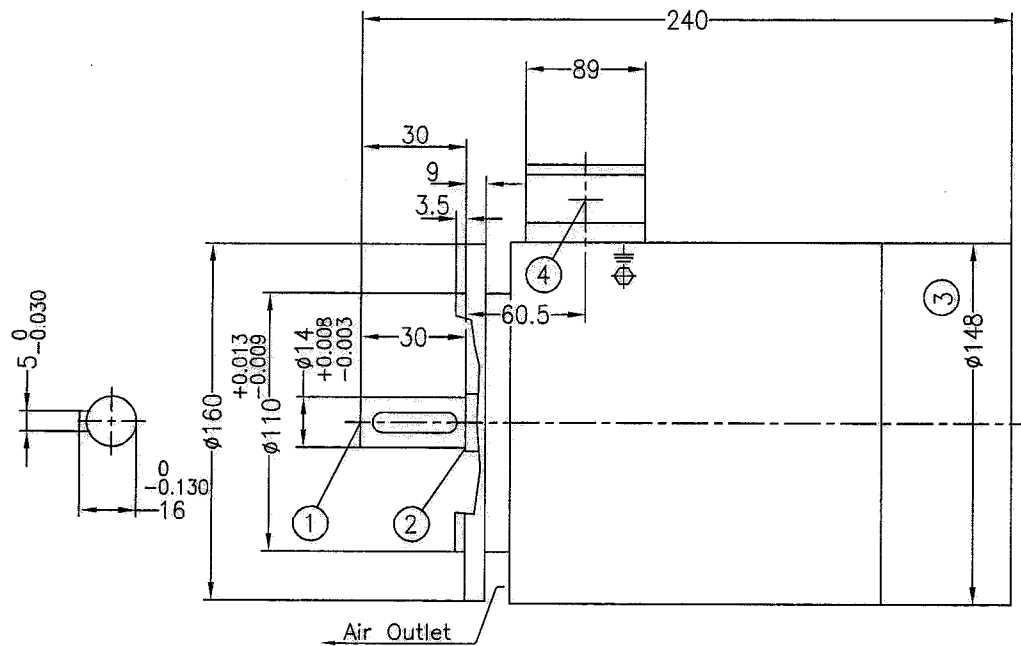
Motor Type : 1LA2 073-4NB71 Voltage : 415VY Rated Speed : 1422 rev/min  
 Output : 0.37 kW Frequency : 50Hz Rated Torque : 0.25 kgf.m / 2.5 Nm  
 Rated Current: 1A

% Load	FL	¾FL	½FL
Efficiency	73.0%	73.0%	67.0%
Power Factor	0.68	0.58	0.45

Locked Rtr Curr	5.5 x Rated
LRWT HOT	5 s
LRWT COLD	11 s

**DATA SUBJECT TO TOLERANCE AS PER IS : 12615.**





- ① Shaft extension  $\phi 14$  x 30 with protected centre hole M5x12
- ② Relief groove E1x0.2 as per IS:3428
- ③ Measured over bolt heads
- ④ 1 No. B.S.Conduit Entry 19 (0.75") - IS:1653

Ⓣ Terminal Box Type : 1XB0 096  
suitable for max. cable conductor cross-section(mm<sup>2</sup>): 6.0

F130B (Frame 71)			IM-B5/V1	
Flange Designation			Applicable for Construction	
Drawn	Date	Name	Dimensional Diagram	Scale
Checked				NTS
Std.CHD.				
Dim. without tolerance as per very coarse IS:2102			DRG No. 4D-2707-04-0242294-101	
SIEMENS LTD MOTORS			REF DRG NO.	