

LED test module Operating voltage 6-240 V AC/DC, screw terminal, for front plate mounting



Product brand name	SIRIUS ACT
Product designation	LED test module
Product type designation	3SU1

General technical data

Product component	
• diode	Yes
• lamp transformer	No
• Light source	No
• series resistor	No
Insulation voltage	
• rated value	320 V
Degree of pollution	3
• Type of voltage of the operating voltage	AC/DC
• .	AC/DC
Surge voltage resistance rated value	4 kV
Consumed current	
• maximum	0 mA
Protection class IP	
• of the enclosure	IP40

• of the terminal	IP20
Shock resistance	
• acc. to IEC 60068-2-27	Sinusoidal half-wave 50 g / 11 ms
• for railway applications acc. to DIN EN 61373	Category 1, Class B
Vibration resistance	
• acc. to IEC 60068-2-6	10 ... 500 Hz: 5g
• for railway applications acc. to DIN EN 61373	Category 1, Class B
Operating period typical	100 000 h
Reference code acc. to DIN EN 81346-2	W
Reference code acc. to DIN EN 61346-2	W
Operating voltage	
• at AC	
— at 50 Hz rated value	6 ... 240 V
— at 60 Hz rated value	6 ... 240 V
• at DC	
— rated value	6 ... 240 V
Relative positive tolerance of the operating voltage	20 %
Relative negative tolerance of the operating voltage	20 %

Control circuit/ Control

Inrush current maximum	3 A
-------------------------------	-----

Connections/ Terminals

Type of electrical connection	screw-type terminals
Type of connectable conductor cross-sections	
• solid with core end processing	2x (0.5 ... 0.75 mm ²)
• solid without core end processing	2x (1.0 ... 1.5 mm ²)
• finely stranded with core end processing	2x (0.5 ... 1.5 mm ²)
• finely stranded without core end processing	2x (1,0 ... 1,5 mm ²)
• at AWG conductors	2x (18 ... 14)
Tightening torque	
• with screw-type terminals	0.8 ... 0.9 N·m
Certificate of suitability	
• ATEX	No
• IECEX	No

Ambient conditions

Ambient temperature	
• during operation	-25 ... +70 °C
• during storage	-40 ... +80 °C
Environmental category during operation acc. to IEC 60721	3M6, 3S2, 3B2, 3K6 (with relative air humidity of 10 ... 95 %, no condensation in operation permitted)

Installation/ mounting/ dimensions

Mounting type	
----------------------	--




- of modules and accessories



Front plate mounting

Height	36 mm
Width	9.8 mm
Depth	25 mm

Certificates/ approvals

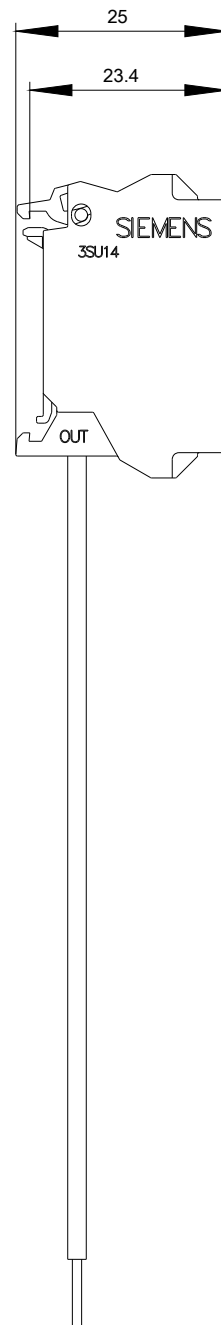
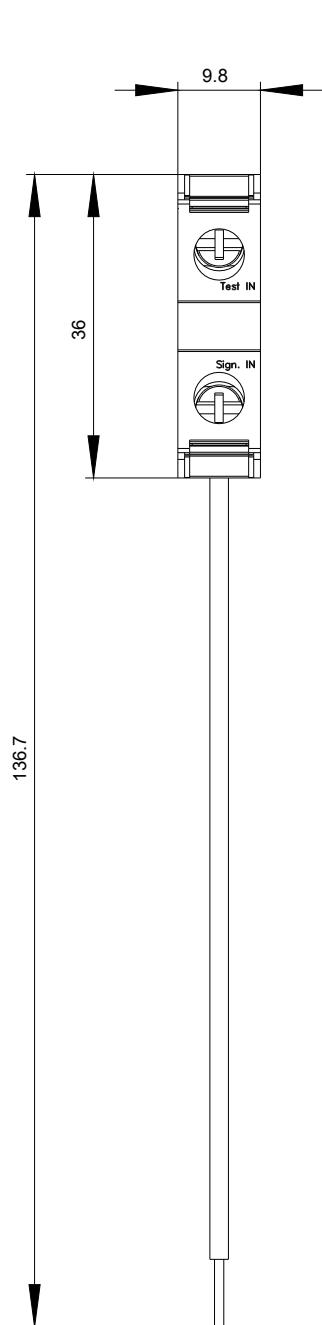
General Product Approval			EMC	Declaration of Conformity	
					
CCC	CSA	UL		RCM	EG-Konf.

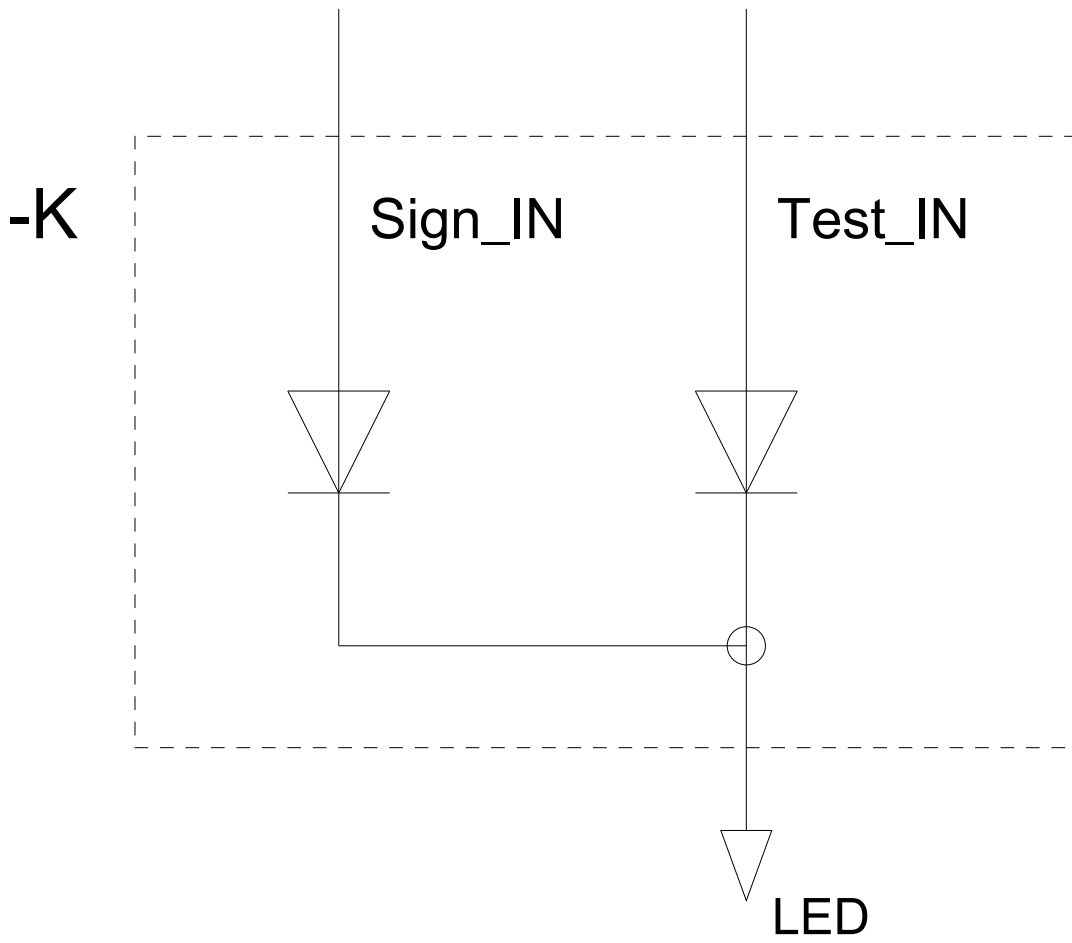
Declaration of Conformity	Test Certificates	Marine / Shipping
Miscellaneous	Type Test Certificates/Test Report	Special Test Certificate
		
		
		
		ABS LRS PRS

Marine / Shipping	other
	Confirmation
	
RINA	
RMRS	

Further information

- Information- and Downloadcenter (Catalogs, Brochures,...)**
<https://www.siemens.com/ic10>
- Industry Mall (Online ordering system)**
<https://mall.industry.siemens.com/mall/en/en/Catalog/product?mlfb=3SU1400-1CK10-1AA0>
- Cax online generator**
<http://support.automation.siemens.com/WW/CAXorder/default.aspx?lang=en&mlfb=3SU1400-1CK10-1AA0>
- Service&Support (Manuals, Certificates, Characteristics, FAQs,...)**
<https://support.industry.siemens.com/cs/ww/en/ps/3SU1400-1CK10-1AA0>
- Image database (product images, 2D dimension drawings, 3D models, device circuit diagrams, EPLAN macros, ...)**
http://www.automation.siemens.com/bilddb/cax_de.aspx?mlfb=3SU1400-1CK10-1AA0&lang=en





last modified:

04/07/2020